

NORTH HAVEN



North Haven Village
Brown's Cove
Southern Harbor
Ames Knob
Wooster Cove
Bartlett Harbor
Pulpit Harbor
North Shore Road
Banks Cove
Mullen Head
Mullen Cove
Little Thorofare
Kent Cove
Fresh Pond
Mill Stream



NORTH HAVEN

With a land area just under 12 square miles, North Haven is the smallest of the three large islands in Penobscot Bay. North Haven and Vinalhaven together form the Fox Islands, and share the highly scenic passage known as the Fox Island Thorofare. A small auto ferry out of Rockland provides the only public link with the mainland. A private water taxi shuttles passengers across the Thorofare from North Haven Village to the Vinalhaven town landing.

The following overview describes some of the highlights of the island's scenic qualities:

- Land use on the island can be categorized into several distinct patterns:
 - The village of North Haven, a well maintained mix of tidy homes, waterfront businesses, and civic buildings, geared more toward the pleasure boater than the fisherman
 - Small settlements
 - Rural residential areas, with several old farms
 - Enclosed woodlands and extensive wetlands
 - Large expanses of open fields
- Despite its open landscape character, North Haven remains a place of great privacy. While there are a number of rambling old cottages, most of the homes are modest and well tended.
- The road network consists of a major loop around the eastern half of the island, and a spur that extends westerly to Wooster Cove along the north shore of Southern Harbor. Very little new development is evident from either the roads or the water.
- With the exception of Pulpit Harbor, the north shore of the island is almost totally without any indentation or major physical feature of note. This lack of configuration is unique to the three islands in the study, and inconsistent with the characteristic landscape of Penobscot Bay. The nearest major land mass is the southern tip of Islesboro, over five miles to the north.
- By contrast, the remainder of the island is characterized by many indentations, coves, and harbors, and several large offshore islands. The arching mass of Vinalhaven's north shore creates a tight sense of enclosure within the Fox Island Thorofare, which is only several hundred yards across at its narrowest point.
- There are very limited number of opportunities for public access or visual access to the water on the island, with some notable exceptions.

- The majority of the topography on the island is flat to gently rolling, with steep embankments along the north shoreline. Ames Knob, a small promontory 150 feet in height just west of the village, affords the public a dramatic 360 degree panorama of the islands and Southern Harbor.
- The distinctive character of North Haven Island is established by a number of memorable places where man-made structures have been set into the natural landscape: North Haven Village, Fox Island Thorofare, Pulpit Harbor, Mullen Head, Kent Cove, and Crabtree Point. Some of the smaller features in the landscape are just as memorable: the osprey nest atop the rock at the entrance to Pulpit Harbor, the stone monument at the tip of Crabtree Point, the isolated cottage at Wooster Cove, the Goose Rocks lighthouse.
- Privately maintained fields contribute to the sense of openness, a rather unique characteristic of the three islands. These pastures and hayfield provide a visual link with the bay while offering a note of civil contrast to the surrounding forest and rocky coastline.
- Part of the visual excitement to the Fox Island Thorofare is the variety and number of boats in the passageway, flanked by grand summer cottages and tall pines. The boating here is primarily for pleasure, with people drawn to the Thorofare from up and down the eastern seaboard.

Scenic Area Evaluation Form

Scenic Area North Haven Village Code NH-01
 1990 Coastal Scenic Inventory Critical Areas Program

Town North Haven
 Maine State Planning Office

Scenic Evaluation

SI: Special Interest
 SC: Scoring
 IP: Indicators Present

| SI | SC | IP |
|----|----|----|
| | | |
| | | |
| | | |
| | 3 | |
| | 9 | XX |
| | | |
| | 9 | |
| | 9 | X |
| | 6 | X |
| | | 4 |
| | 36 | |

1. Landform
Elevation
Slope
2. Open Land
3. Shoreline Configuration
4. Scenic Features
5. Scenic Quality of Water
Duration of View
Type of Water
Quality of Horizon
Indicators Present
Desktop Subtotal

| | |
|---|----|
| X | 7 |
| | 3 |
| X | 9 |
| | 8 |
| X | 9 |
| | 36 |

6. Landscape Character
Land Use
Roadside Characteristics
Settlement Characteristics
7. Vegetation
8. Composition & Effect
Field Evaluation

72

TOTAL SCORE

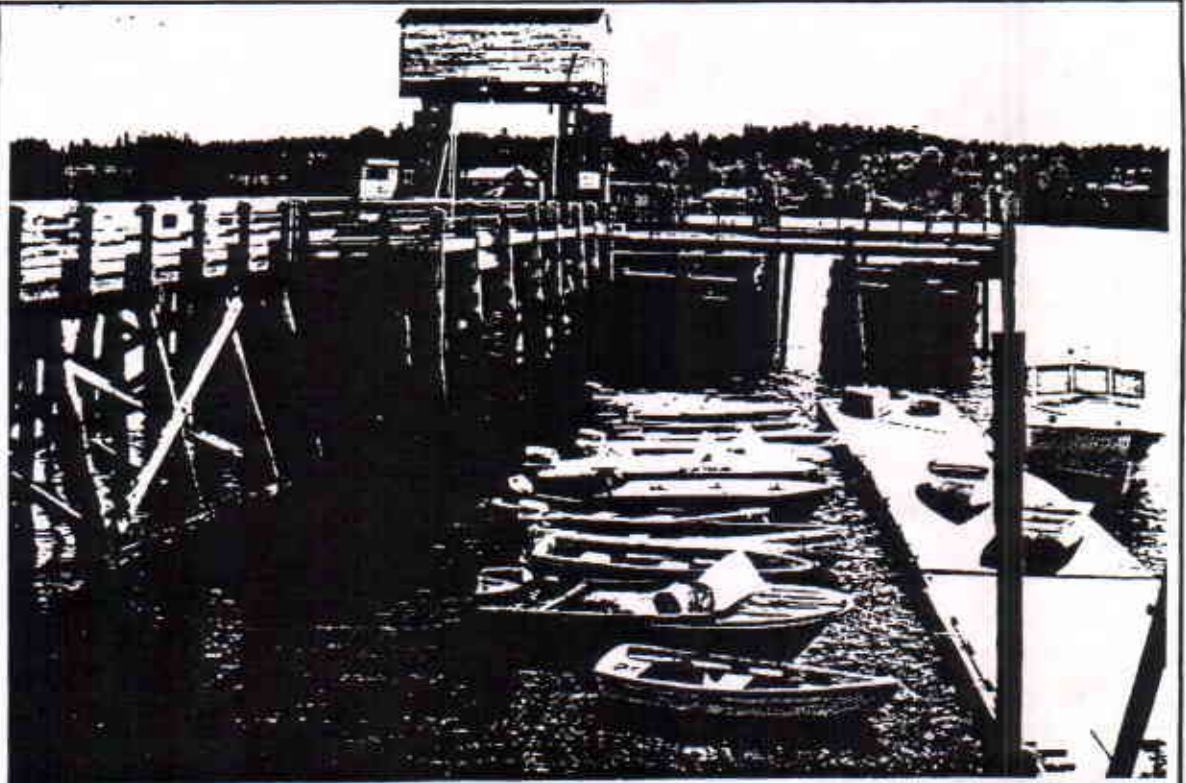
Viewshed Description

North Haven is one of Maine's most intact and visually unified seacoast communities, noted for its trim architecture, compact form, and the variety and number of sailing vessels and lobster boats. The village is horizontally stratified: the waterfront, with the ferry terminal, boatbuilders, chandlery, restaurants, shops, and yacht club; Main Street, the center of commercial activity; and the hillside, with well kept New England homes and churches rising up the hillside. The grid pattern of streets, open spaces, and wood framed buildings is reinforced by picket fences, stone walls, and hedgerows. Views between buildings open to the Fox Islands Thorofare and the Vinalhaven shoreline. The village has fortunately escaped much of the building boom that swept through Maine in the 1980's. New construction has been accomplished with a sensitivity to the character and scale of the village.

Viewshed Management Recommendations

Conservation easements on Vinalhaven to protect the view from North Haven and the Fox Islands Thorofare. Strict adherence to Shoreland Zoning provisions and Site Plan Review standards.

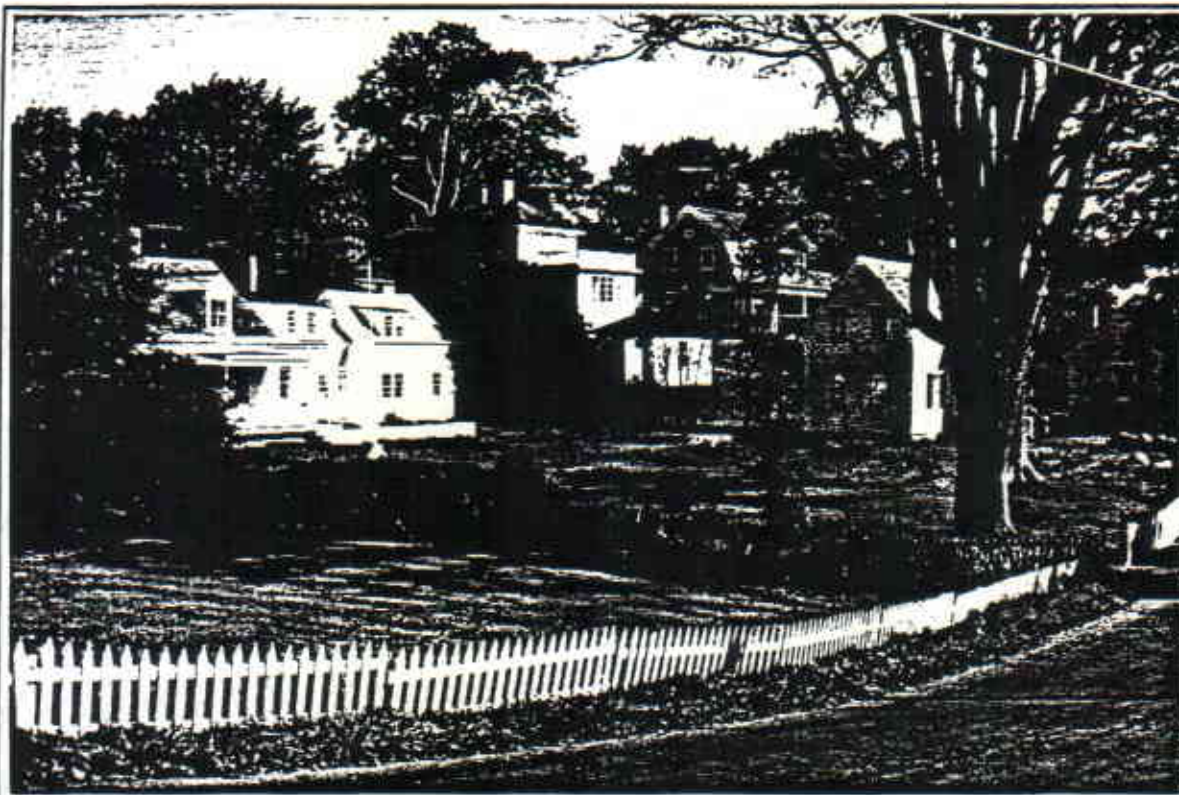
The ferry terminal, reaching into Fox Islands Thorofare, is the first point of contact. Vinalhaven Island forms the backdrop to the harbor.



Scenic Area Evaluation Form

Scenic Area North Haven Village Code NH-01
1990 Coastal Scenic Inventory Critical Areas Program

Town North Haven
Maine State Planning Office



The character of the village is defined by traditional New England architectural forms, reinforced by fences, walls, and hedge-rows.



The waterfront is a diverse mixture of shops, galleries, and restaurants set among the ferry terminal, chandlery, and boatbuilding shop.

Scenic Area Location



Scenic Area North Haven Village Code NH-01 Town North Haven
North Haven East/North Haven West USGS Quadrangles: 7.5 minute series



Scenic Area Evaluation Form

Scenic Area **Browns Cove**
1990 Coastal Scenic Inventory

Code **NH-02**
Critical Areas Program

Town **North Haven**
Maine State Planning Office

Scenic Evaluation

SI: Special Interest
SC: Scoring
IP: Indicators Present

| SI | SC | IP |
|----|----|----|
| | | |
| | | |
| | 4 | |
| | 6 | X |
| | 9 | X |
| | | |
| | 3 | |
| | 7 | X |
| | 3 | X |
| | | 4 |
| 32 | | |

1. Landform
Elevation
Slope
 2. Open Land
 3. Shoreline Configuration
 4. Scenic Features
 5. Scenic Quality of Water
Duration of View
Type of Water
Quality of Horizon
- Indicators Present
Desktop Subtotal

| | |
|----|---|
| | 6 |
| | 3 |
| | 6 |
| | 7 |
| | 7 |
| 29 | |

6. Landscape Character
Land Use
Roadside Characteristics
Settlement Characteristics
 7. Vegetation
 8. Composition & Effect
- Field Evaluation

| | |
|----|--|
| 61 | |
|----|--|

TOTAL SCORE

Viewshed Description

Browns Cove is a relatively small indentation in Fox Islands Thorofare, just west of the village. The shoreline is moderately configured and open to Vinalhaven on the opposite shoreline. The sense of openness extends to Ames Knob, a prominent rock outcrop that affords a spectacular view of the cove and much of North Haven Island (see NH-04). Views of the cove are somewhat limited by the dense evergreen vegetation along the Ames Point Road. However, the viewpoint is within an easy walking distance from the ferry terminal and the village.

Viewshed Management Recommendations

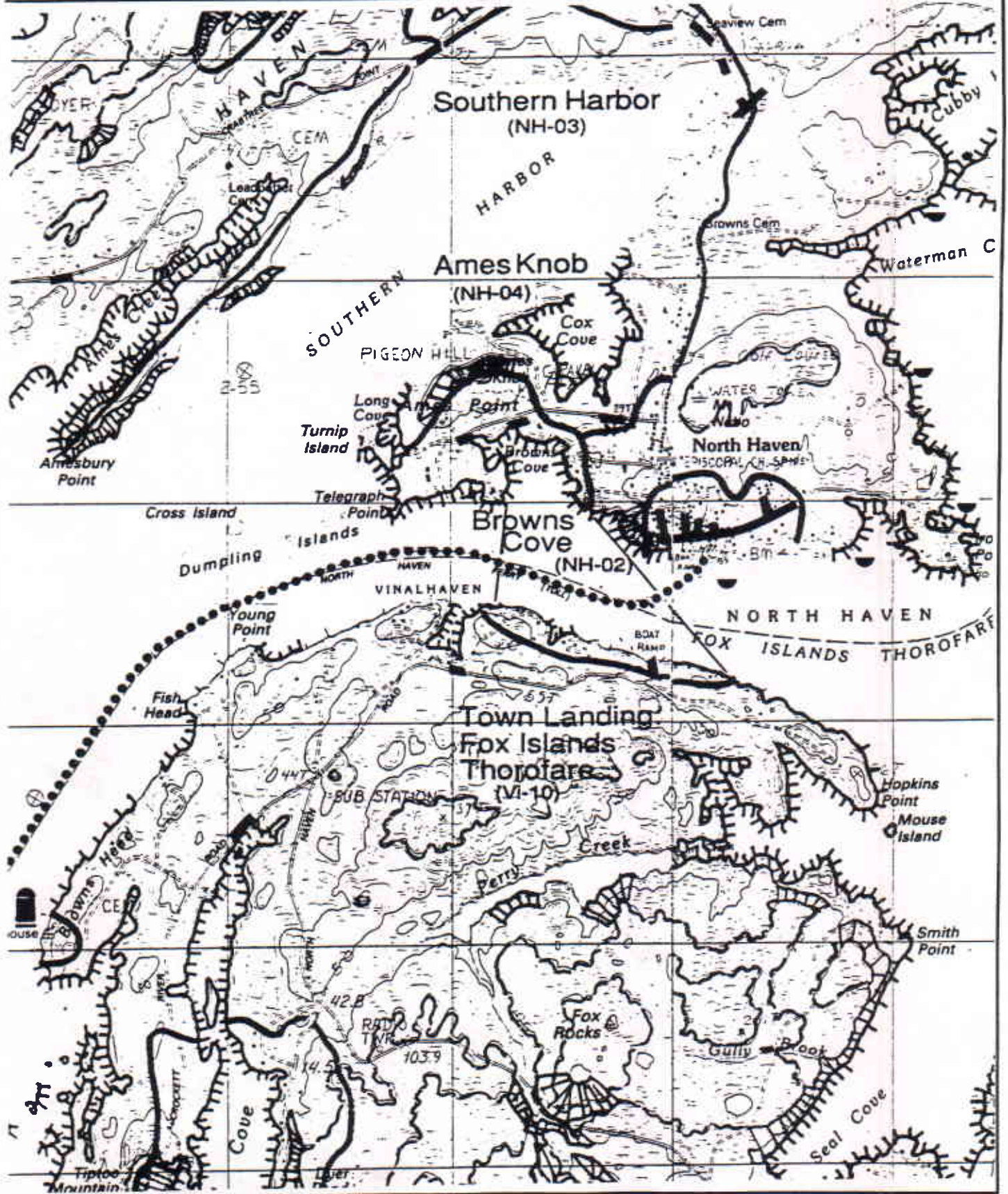
Continued vegetation management to preserve open views to Fox Islands Thorofare.

The view from the Ames Point Road opens south into Browns Cove, extending to Fox Island Thorofare and Vinalhaven beyond.



Scenic Area Location

Scenic Area Browns Cove Code NH-02 Town North Haven
North Haven West USGS Quadrangle: 7.5 minute series



Scenic Area Evaluation Form

Scenic Area **Southern Harbor**
1990 Coastal Scenic Inventory

Code **NH-03**
Critical Areas Program

Town **North Haven**
Maine State Planning Office

Scenic Evaluation

SI: Special Interest
SC: Scoring
IP: Indicators Present

| SI | SC | IP |
|----|----|----|
| | | |
| | | |
| | 6 | |
| | 6 | X |
| | 6 | X |
| | | |
| | 6 | X |
| | 9 | X |
| | 6 | X |
| | | 5 |
| 39 | | |

1. Landform
Elevation
Slope
 2. Open Land
 3. Shoreline Configuration
 4. Scenic Features
 5. Scenic Quality of Water
Duration of View
Type of Water
Quality of Horizon
Indicators Present
- Desktop Subtotal

| | |
|----|---|
| X | 5 |
| | 3 |
| | 6 |
| X | 6 |
| | 6 |
| 26 | |

6. Landscape Character
Land Use
Roadside Characteristics
Settlement Characteristics
7. Vegetation
8. Composition & Effect
Field Evaluation

65

TOTAL SCORE

Viewshed Description

Southern Harbor is the largest of the extensions emanating from Fox Islands Thorofare. Public view-points are limited to a few openings along the perimeter roads and the Seaview Cemetery at the eastern end. The cemetery is noted for its ornate tombstones, cast iron fencing, and dramatic setting at the head of the cove. The cove is sparsely developed with village homes, farmhouses, summer cottages, and a large boatyard. The shoreline is highly configured, with evergreen slopes and open fields meeting saltmarshes and open water.

Viewshed Management Recommendations

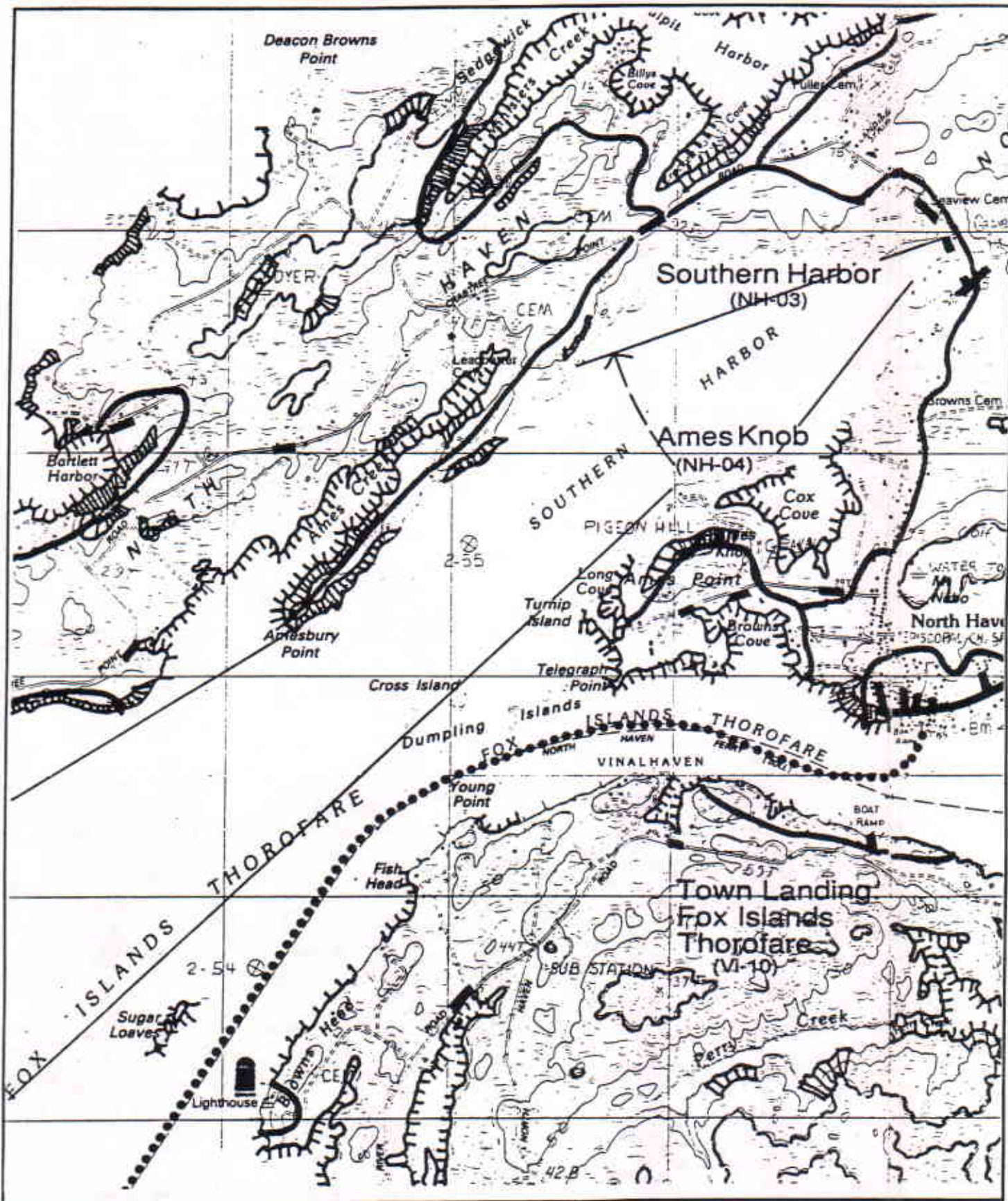
Vegetation management to preserve the few openings along the perimeter road. Conservation easements to protect the viewshed of Southern Cove. Continued maintenance of the Seaview Cemetery. Selective vegetation management within the cemetery.

The Seaview Cemetery at the eastern end of Southern Cove is one of the few points of visual access available to the public.



Scenic Area Location

Scenic Area Southern Harbor Code NH-03 Town North Haven
North Haven West USGS Quadrangle: 7.5 minute series



Scenic Area Evaluation Form

Scenic Area **Ames Knob**
1990 Coastal Scenic Inventory

Code **NH-04**
Critical Areas Program

Town **North Haven**
Maine State Planning Office

Scenic Evaluation

SI: Special Interest
SC: Scoring
IP: Indicators Present

| SI | SC | IP |
|----|----|----|
| | 6 | X |
| | 2 | X |
| | 2 | X |
| | 6 | X |
| | 9 | X |
| | 3 | |
| X | 12 | X |
| | 9 | |
| | | 6 |
| 49 | | |

- Landform
Elevation
Slope
 - Open Land
 - Shoreline Configuration
 - Scenic Features
 - Scenic Quality of Water
Duration of View
Type of Water
Quality of Horizon
- Indicators Present
Desktop Subtotal

| | |
|----|---|
| | 6 |
| | 5 |
| | 6 |
| | 9 |
| | 8 |
| 34 | |

- Landscape Character
Land Use
Roadside Characteristics
Settlement Characteristics
- Vegetation
- Composition & Effect
Field Evaluation

83

TOTAL SCORE

Viewshed Description

Ames Knob, elevation 140, offers the hiker a dramatic 360° panorama of Southern Harbor, Fox Islands Thorofare, Pulpit Harbor, and the northern portion of Vinalhaven. The view gives an instructive overview of the characteristic landscape of North Haven, with its deeply indented coves, well maintained fields, scattered settlement patterns, and granite bedrock foundation. The narrow foot path to the top winds through a richly textured moor of ferns, bayberry, sumac, rock outcrops. Ames Knob is the finest publicly accessible viewpoint on the island.

Viewshed Management Recommendations

Continued vegetation management to maintain the panoramic view at the summit and keep the moor at the base of the knob open.

From the top of Ames Knob, the viewer has a 360° panorama of the Fox Islands Thorofare, Southern Harbor, and much of the northern part of Vinalhaven. View looking north toward Southern Cove with Cox Cove in the immediate foreground.



Scenic Area Evaluation Form

Scenic Area Ames Knob
1990 Coastal Scenic Inventory

Code NH-04
Critical Areas Program

Town North Haven
Maine State Planning Office



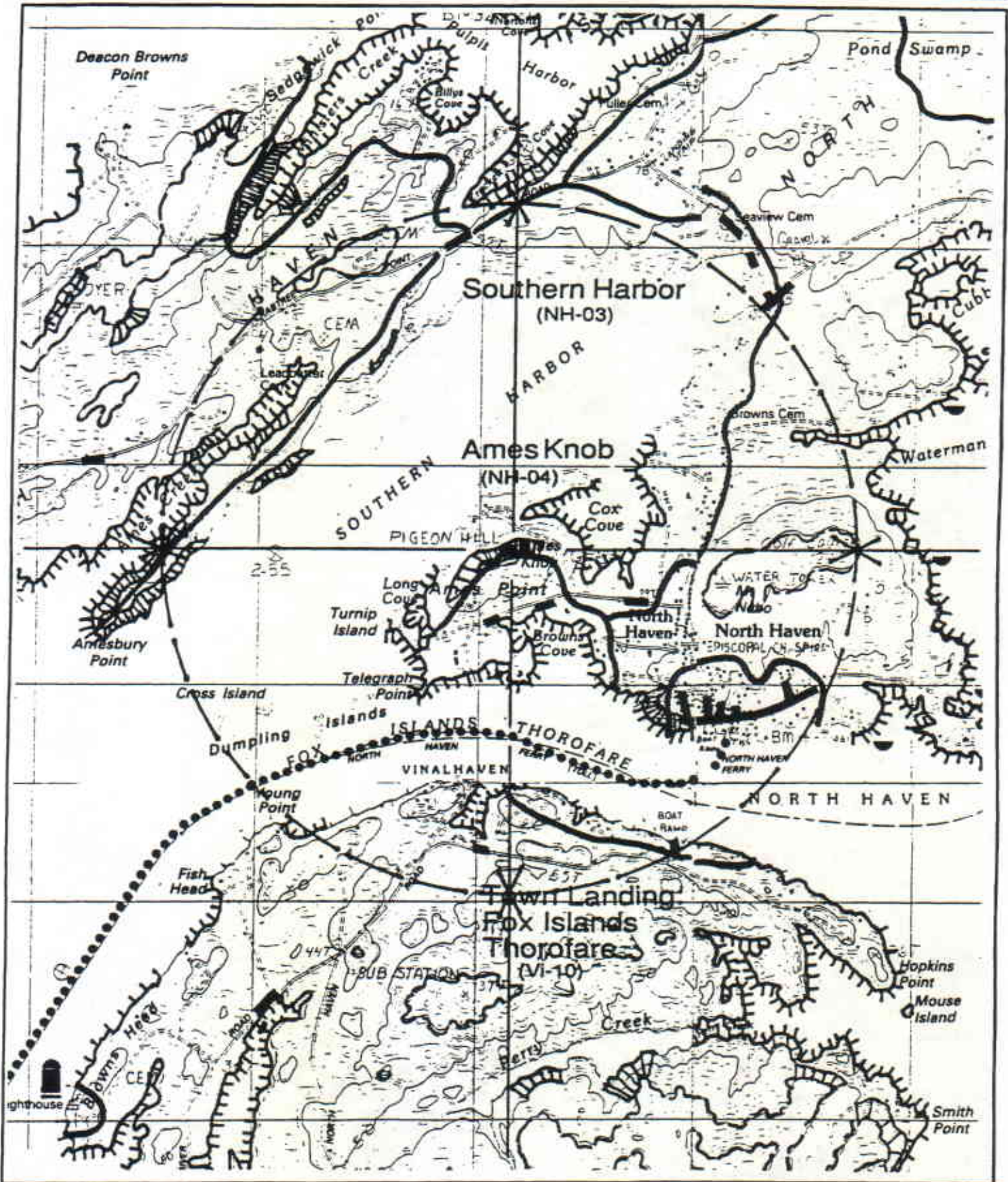
Southerly view from the summit of Ames Knob encompasses Fox Islands Thoro-fare and the northern portion of Vinalhaven.



Extensive, well maintained fields are part of the characteristic landscape of North Haven. View looking northwest from Ames Knob toward Amesbury Point. Camden Hills can be seen in the background.

Scenic Area Location

Scenic Area Ames Knob Code NH-04 Town North Haven
North Haven East USGS Quadrangle: 7.5 minute series



Scenic Area Evaluation Form

Scenic Area **Wooster Cove**
1990 Coastal Scenic Inventory

Code **NH-05**
Critical Areas Program

Town **North Haven**
Maine State Planning Office

Scenic Evaluation

SI: Special Interest
SC: Scoring
IP: Indicators Present

| SI | SC | IP |
|----|----|----|
| | 2 | |
| | 2 | |
| | 6 | X |
| | 9 | X |
| | 3 | |
| | 9 | |
| | 6 | X |
| | | 3 |
| 37 | | |

1. Landform
Elevation
Slope
2. Open Land
3. Shoreline Configuration
4. Scenic Features
5. Scenic Quality of Water
Duration of View
Type of Water
Quality of Horizon
Indicators Present
Desktop Subtotal

| | |
|----|---|
| | 6 |
| | 4 |
| | 5 |
| | 7 |
| | 7 |
| 79 | |

6. Landscape Character
Land Use
Roadside Characteristics
Settlement Characteristics
7. Vegetation
8. Composition & Effect
Field Evaluation

66

TOTAL SCORE

Viewshed Description

Wooster Cove is the southernmost point of public access to Penobscot Bay on North Haven Island. The cove features sweeping westerly views of West Penobscot Bay, the Camden Hills, and several of the small islands south of Islesboro. The light pebble beaches contrast with the black igneous rock out crops. The foreground features include Narrow Place Beach and Wooster Cove, which lead the eye to a solitary, grand old cottage at the tip of Northwest Point. A small gravel parking area or turn around is conveniently located near the terminus of the public right of way.

Viewshed Management Recommendations

Vegetation management to preserve views at the end of Crabtree Point Road.

The view from Wooster Cove includes a sandy beach, dramatic views of the Camden Hills, and an large cottage perched on Northwest Point.



Scenic Area Evaluation Form

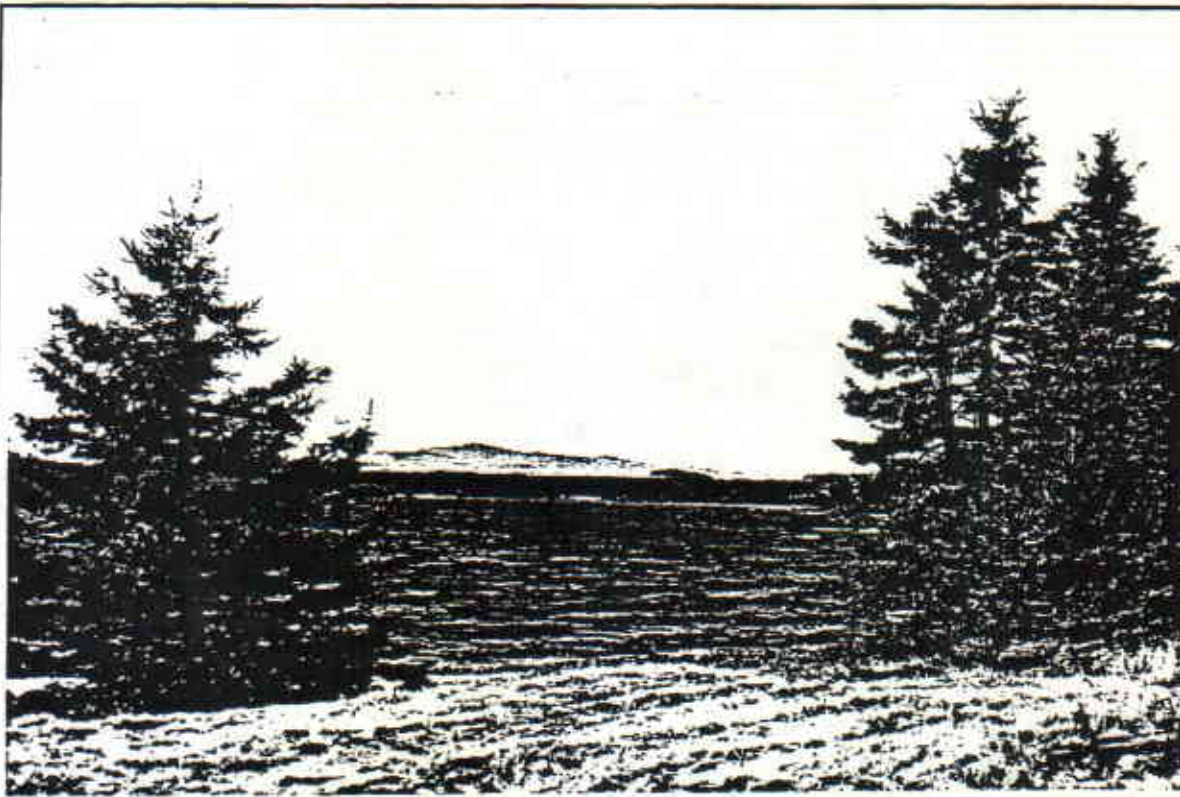
Scenic Area Wooster Cove
1990 Coastal Scenic Inventory

Code NH-05
Critical Areas Program

Town NorthHaven
Maine State Planning Office



The view to the southwest includes the entire Camden Hills range.



The view to the northwest includes Mark Island, at the southern end of Islesboro.

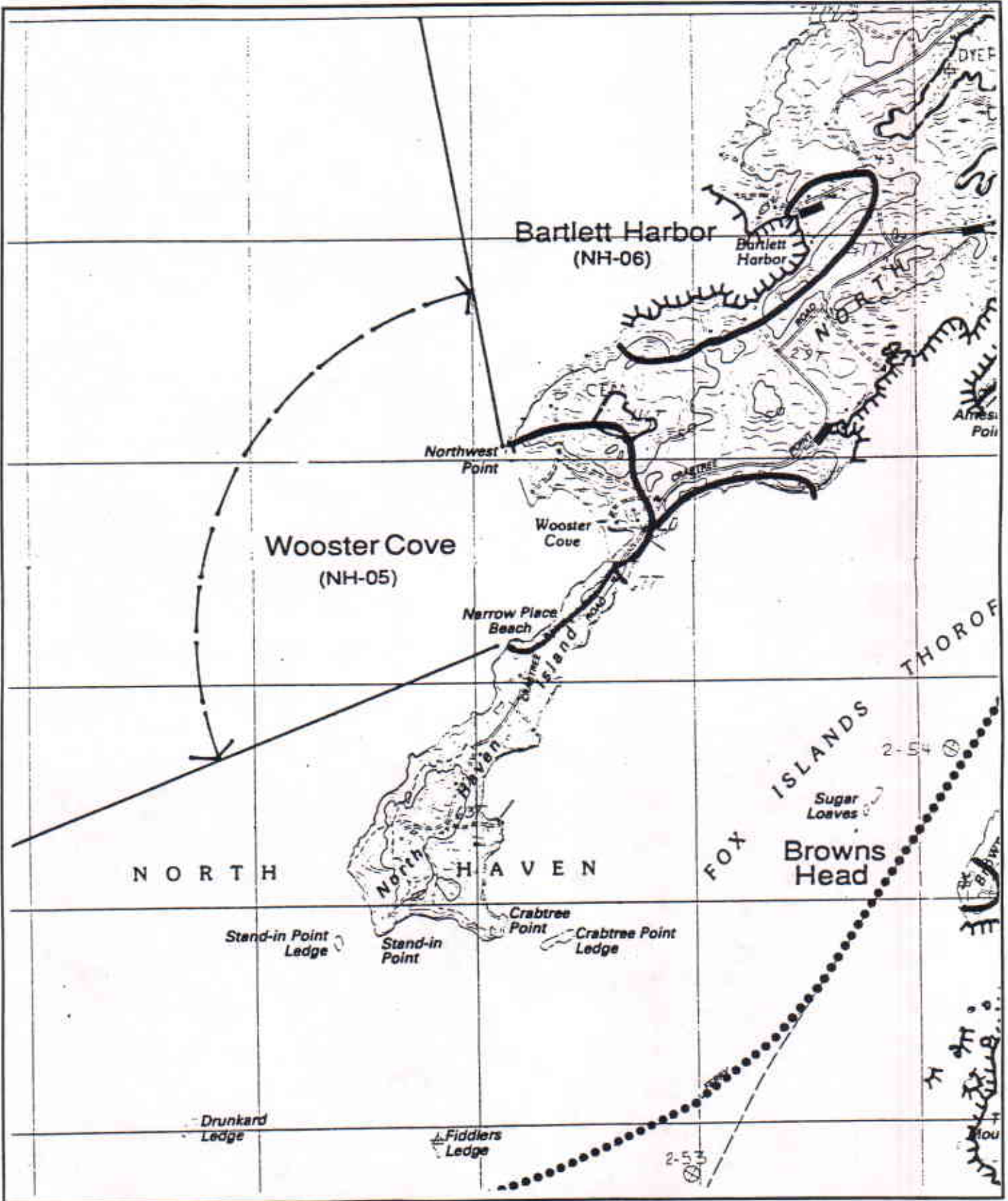
Scenic Area Location

Scenic Area **Wooster Cove**
North Haven West

Code **NH-05**

Town **North Haven**

USGS Quadrangle: 7.5 minute series



Scenic Area Evaluation Form

Scenic Area **Bartlett Harbor**
1990 Coastal Scenic Inventory

Code **NH-06**
Critical Areas Program

Town **North Haven**
Maine State Planning Office

Scenic Evaluation

SI: Special Interest
SC: Scoring
IP: Indicators Present

| SI | SC | IP |
|----|----|----|
| | 2 | |
| | | |
| | 1 | |
| | 6 | X |
| | 9 | X |
| | | |
| | 3 | |
| | 6 | |
| | 3 | |
| | | 2 |
| 30 | | |

- Landform
Elevation
Slope
- Open Land
- Shoreline Configuration
- Scenic Features
- Scenic Quality of Water
Duration of View
Type of Water
Quality of Horizon
Indicators Present
Desktop Subtotal

| | | |
|----|---|--|
| | 6 | |
| | 1 | |
| | 6 | |
| | 3 | |
| | 6 | |
| 22 | | |

- Landscape Character
Land Use
Roadside Characteristics
Settlement Characteristics
- Vegetation
- Composition & Effect
Field Evaluation

52

TOTAL SCORE

Viewshed Description

Bartlett Harbor is a relatively small, very private cove on the northwestern face of North Haven. The harbor is further enclosed by a pronounced series of wooded ridges on the south, which lead the eye out to the water. Views of the water are limited, since the gravel road terminates in a private yard, with limited space for a turnaround. An old dike separates the pond from the Harbor while serving as the access to several cottages on the southern shore. Bartlett Harbor is primarily of local visual interest due to its limited visibility and access constraints.

Viewshed Management Recommendations

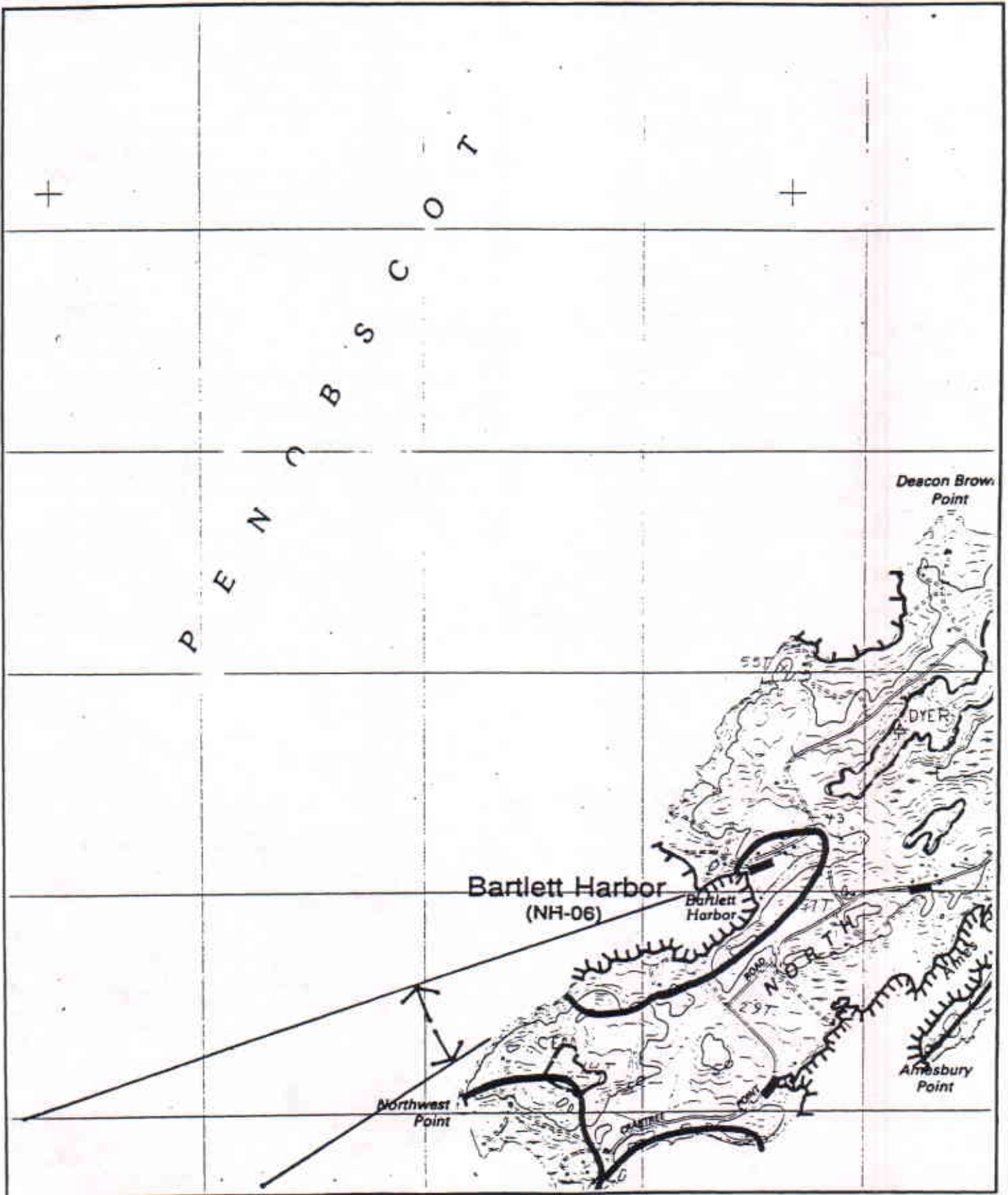
Strict adherence to site plan review and shoreland zoning provisions to guide development on the hillside overlooking the harbor.

The Bartlett Harbor area is a rich landscape of freshwater wetlands, wooded hillside, and small cottages, oriented to Penobscot Bay.



Scenic Area Location

Scenic Area **Bartlett Harbor** Code **NH-06** Town **North Haven**
North Haven West USGS Quadrangle: 7.5 minute series



Scenic Area Evaluation Form

Scenic Area **Pulpit Harbor**
1990 Coastal Scenic Inventory

Code **NH-07**
Critical Areas Program

Town **North Haven**
Maine State Planning Office

Scenic Evaluation

SI: Special Interest
SC: Scoring
IP: Indicators Present

| SI | SC | IP |
|--------------------|----|----|
| | 2 | |
| | 2 | |
| | 5 | X |
| | 9 | X |
| | 9 | X |
| | 6 | |
| | 6 | X |
| | 6 | X |
| | | 5 |
| Indicators Present | | |
| Desktop Subtotal | | 45 |

| | |
|----|---|
| | 5 |
| | 3 |
| X | 6 |
| X | 8 |
| X | 7 |
| 39 | |

84

- Landform
Elevation
Slope
- Open Land
- Shoreline Configuration
- Scenic Features
- Scenic Quality of Water
Duration of View
Type of Water
Quality of Horizon
Indicators Present
- Landscape Character
Land Use
Roadside Characteristics
Settlement Characteristics
- Vegetation
- Composition & Effect
Field Evaluation

TOTAL SCORE

Viewshed Description Pulpit Harbor is one of the most sheltered small harbors on the coast of Maine. Its highly configured shoreline is bordered by well maintained cottages, low hills, rolling open fields, and mixed woodland. The contrasting vegetation and intimate scale of the homes create memorable patterns in the landscape. Several large estates are nestled among tall spruce trees. Boats are moored at the head of the cove within sight of the town landing. Windjammers commonly moor over night. Ospreys have nested on Pulpit Rock at the entrance to the harbor for over 150 years. Pulpit Harbor is a private place, with limited visual access to the water. A rugged granite bridge over Norton Cove offers the most direct views. A **CRUISING GUIDE TO THE MAINE COAST** gives Pulpit Harbor a five star rating (its highest) for "beauty/interest".

Viewshed Management Recommendations Continued maintenance of open fields to sustain the feeling of depth and variety in the landscape. Preservation of shore frontage and ridgetops through careful use of scenic easements, tax incentives, and/or development review. Minor improvements to parking facilities at the town landing.

Pulpit Rock, and its longstanding osprey's nest, marks the entrance to Pulpit Harbor.



Scenic Area Evaluation Form

Scenic Area Pulpit Harbor
1990 Coastal Scenic Inventory

Code NH-07
Critical Areas Program

Town North Haven
Maine State Planning Office



Pulpit Harbor, one of the most protected moorings along the coast, is noted for its gracious cottages and well groomed landscape. View looking east near the entrance to the harbor.



Open fields give a sense of spaciousness to North Haven Island that is unique to the large land masses in Penobscot Bay. View looking east into Pulpit Harbor

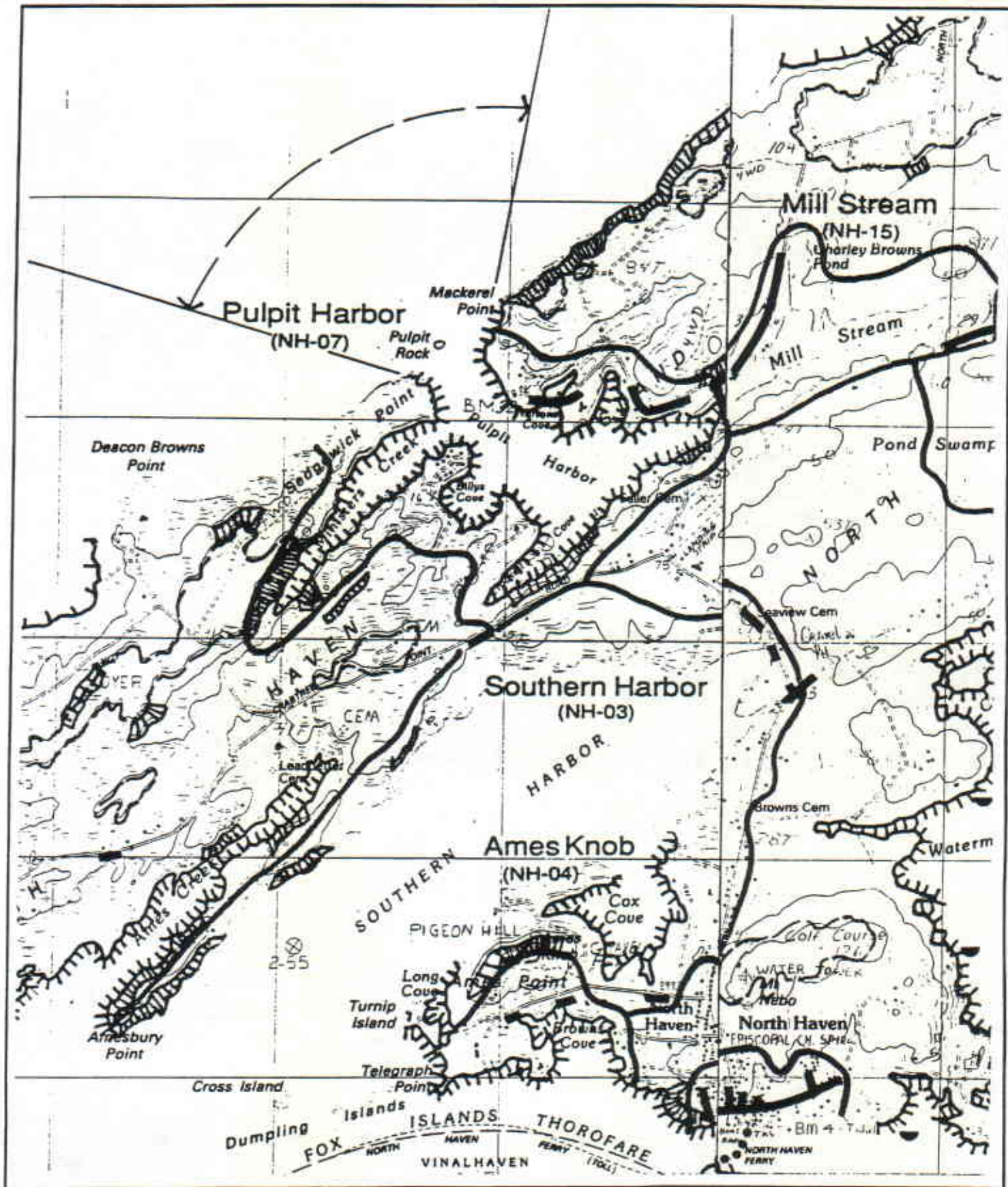
Scenic Area Location

Scenic Area Pulpit Harbor
North Haven West

Code NH-07

Town North Haven

USGS Quadrange: 7.5 minute series



Scenic Area Evaluation Form

Scenic Area North Shore Road
1990 Coastal Scenic Inventory

Code NH-08
Critical Areas Program

Town North Haven
Maine State Planning Office

Scenic Evaluation

SI: Special Interest
SC: Scoring
IP: Indicators Present

| SI | SC | IP |
|--------------------|----|----|
| | 6 | X |
| | 6 | X |
| | 9 | XX |
| | 6 | |
| | 6 | |
| | 9 | X |
| | | 4 |
| Indicators Present | | |
| Desktop Subtotal | | 42 |

- Landform
Elevation
Slope
- Open Land
- Shoreline Configuration
- Scenic Features
- Scenic Quality of Water
Duration of View
Type of Water
Quality of Horizon

| | |
|----|---|
| X | 7 |
| | 6 |
| X | 6 |
| X | 7 |
| X | 9 |
| 35 | |
| 77 | |

- Landscape Character
Land Use
Roadside Characteristics
Settlement Characteristics
 - Vegetation
 - Composition & Effect
Field Evaluation
- TOTAL SCORE**

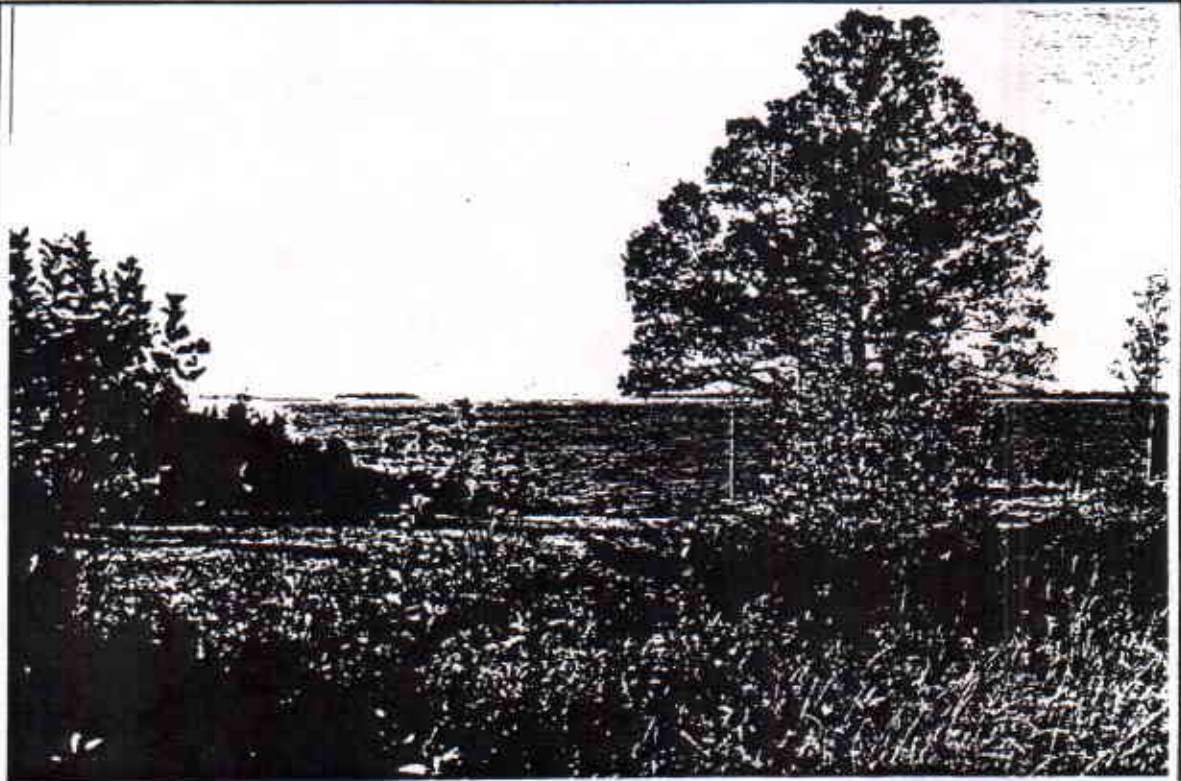
Viewshed Description

The northern portion of North Haven Island is characterized by rolling fields, hedgerows, solitary stands of pines and birches, and panoramic views into West Penobscot Bay. Near Webster Head, where the road is 100' above the water, the view extends over the fields out to the Camden Hills, with Islesboro and many other smaller islands enriching the scene. Many islands, especially those beyond 3 miles, are indistinguishable with the mainland. The fields appear to drop out of sight as they extend toward the water, giving the views a great sense of depth. The views from the North Shore Road are among the most memorable on the island.

Viewshed Management Recommendations

Maintain existing fields to preserve open vistas.

The Camden Hills are a prominent feature on the horizon, seen rising above West Penobscot Bay. View from the North Shore Road just west of Webster Head.

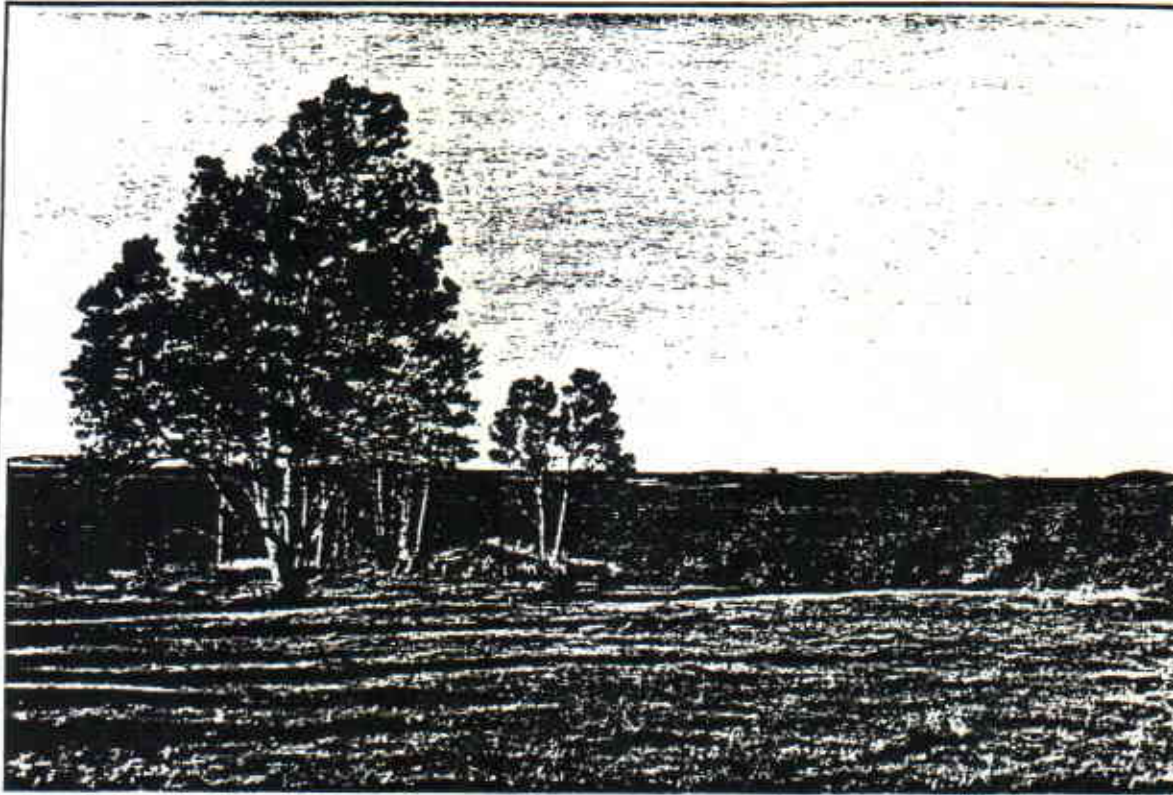


Scenic Area Evaluation Form

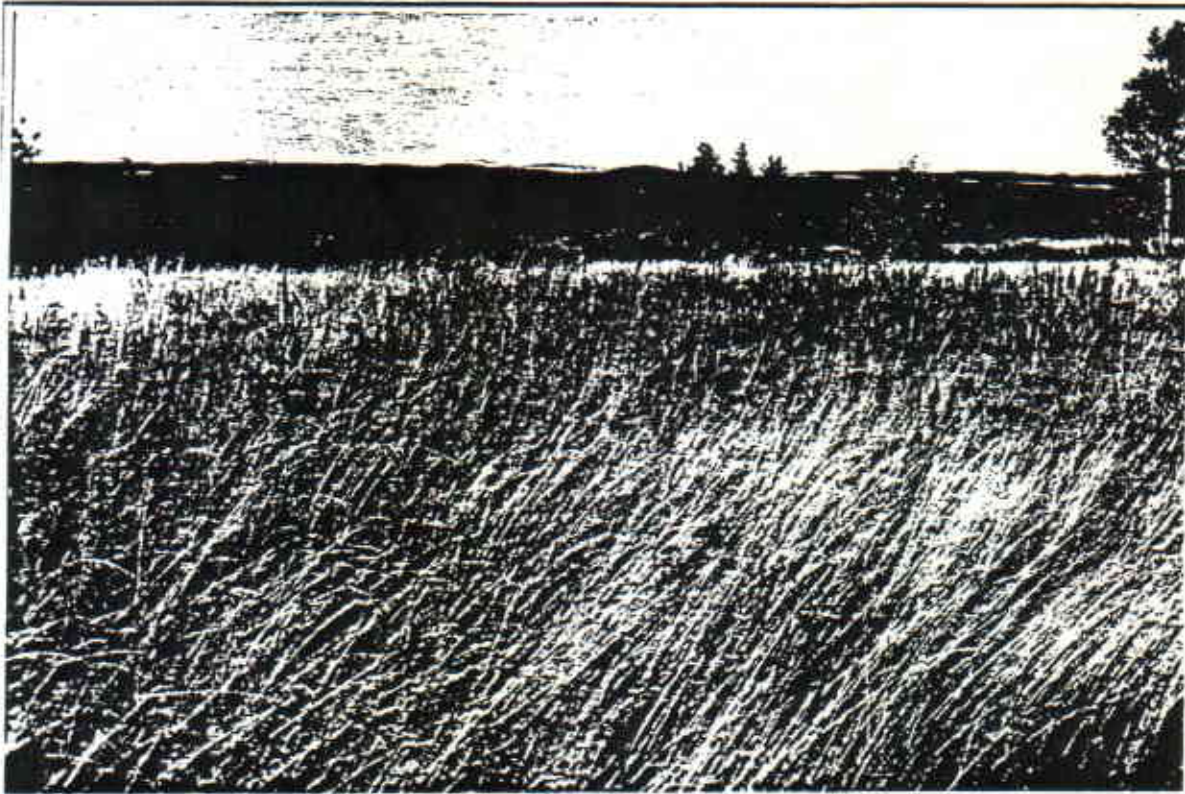
**Scenic Area North Shore Road
1990 Coastal Scenic Inventory**

**Code NH-08
Critical Areas Program**

**Town North Haven
Maine State Planning Office**



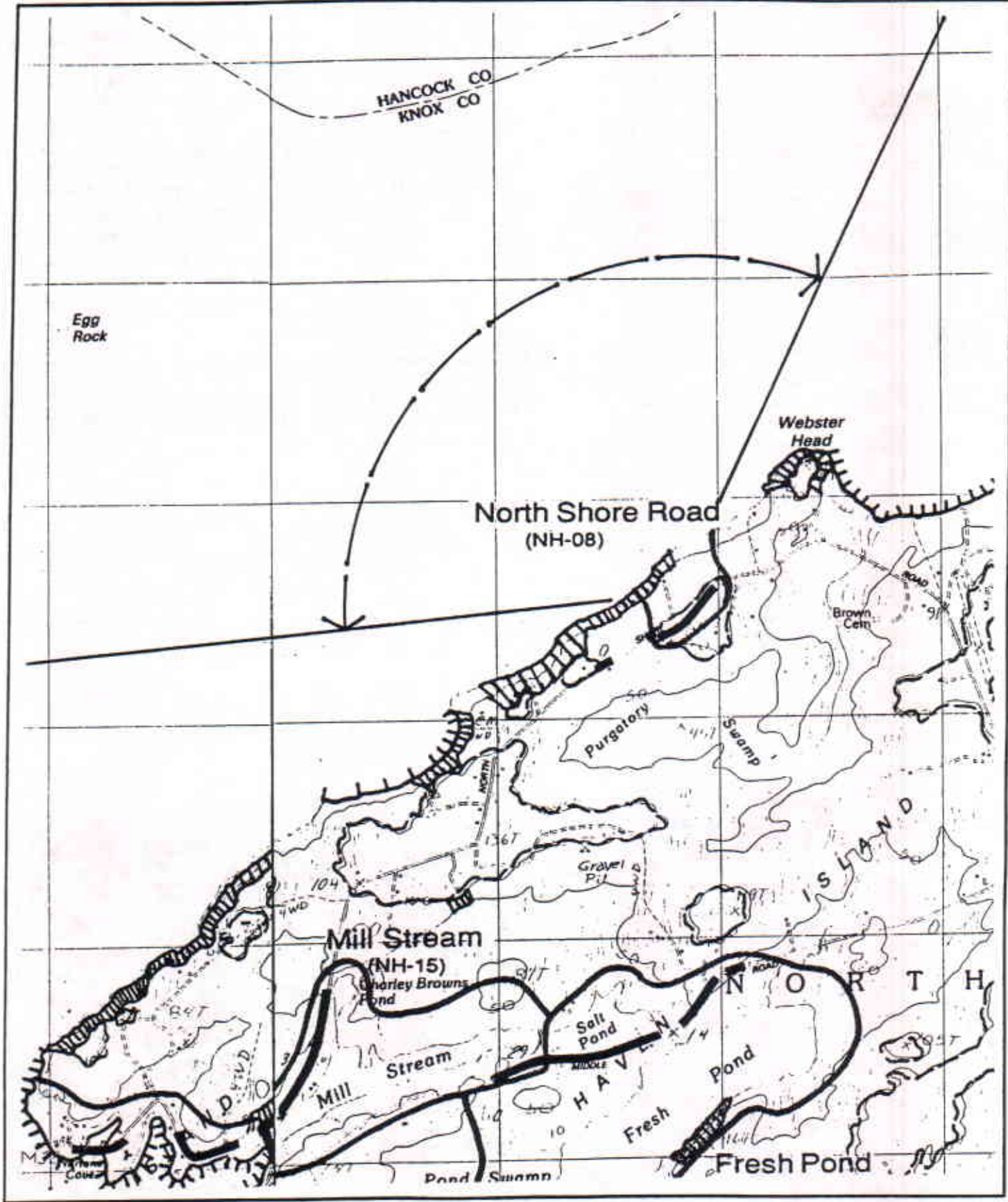
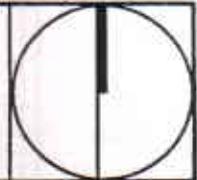
*View looking north-
west from the North
Shore Road to West
Penobscot Bay.*



*Open fields main-
tained by private
landowners are a
characteristic fea-
ture of the North
Haven landscape.*

Scenic Area Location

Scenic Area North Shore Road Code NH-08 Town North Haven
North Haven East USGS Quadrangle: 7.5 minute series



Scenic Area Evaluation Form

Scenic Area **Banks Cove**
1990 Coastal Scenic Inventory

Code **NH-09**
Critical Areas Program

Town **North Haven**
Maine State Planning Office

Scenic Evaluation

| SI | SC | IP |
|----|----|----|
| | | |
| | | |
| | | |
| | 6 | |
| | 9 | X |
| | | |
| | 3 | X |
| | 9 | |
| | 6 | |
| | | 2 |
| 33 | | |

| | |
|----|---|
| | 5 |
| | 3 |
| | 6 |
| | 7 |
| | 9 |
| 33 | |

66

SI: Special Interest
SC: Scoring
IP: Indicators Present

- Landform
Elevation
Slope
 - Open Land
 - Shoreline Configuration
 - Scenic Features
 - Scenic Quality of Water
Duration of View
Type of Water
Quality of Horizon
Indicators Present
Desktop Subtotal
 - Landscape Character
Land Use
Roadside Characteristics
Settlement Characteristics
 - Vegetation
 - Composition & Effect
Field Evaluation
- TOTAL SCORE**

Viewshed Description

Banks Cove is a semi-enclosed waterbody opening in a northeasterly direction to East Penobscot Bay. Its wide sweeping, regular shoreline allows views of the entire cove from all points. The shoreline is a mixture of small pebble beach areas combined with more the characteristic rocky edges. The predominantly evergreen cover is broken by a large field extending to the waters edge at the northern end of the cove. One home is visible from the cove. A campground and small picnic area located near the center of the cove, part of the town park, provides ample opportunity for public access. The cove affords good views of distant island clusters and Deer Isle on the eastern horizon.

Viewshed Management Recommendations

Continued high level of maintenance for all facilities.

The broad sweep of Banks Cove draws the eye outward to Sheep Island to the northeast and Boy Scout Island on the east.

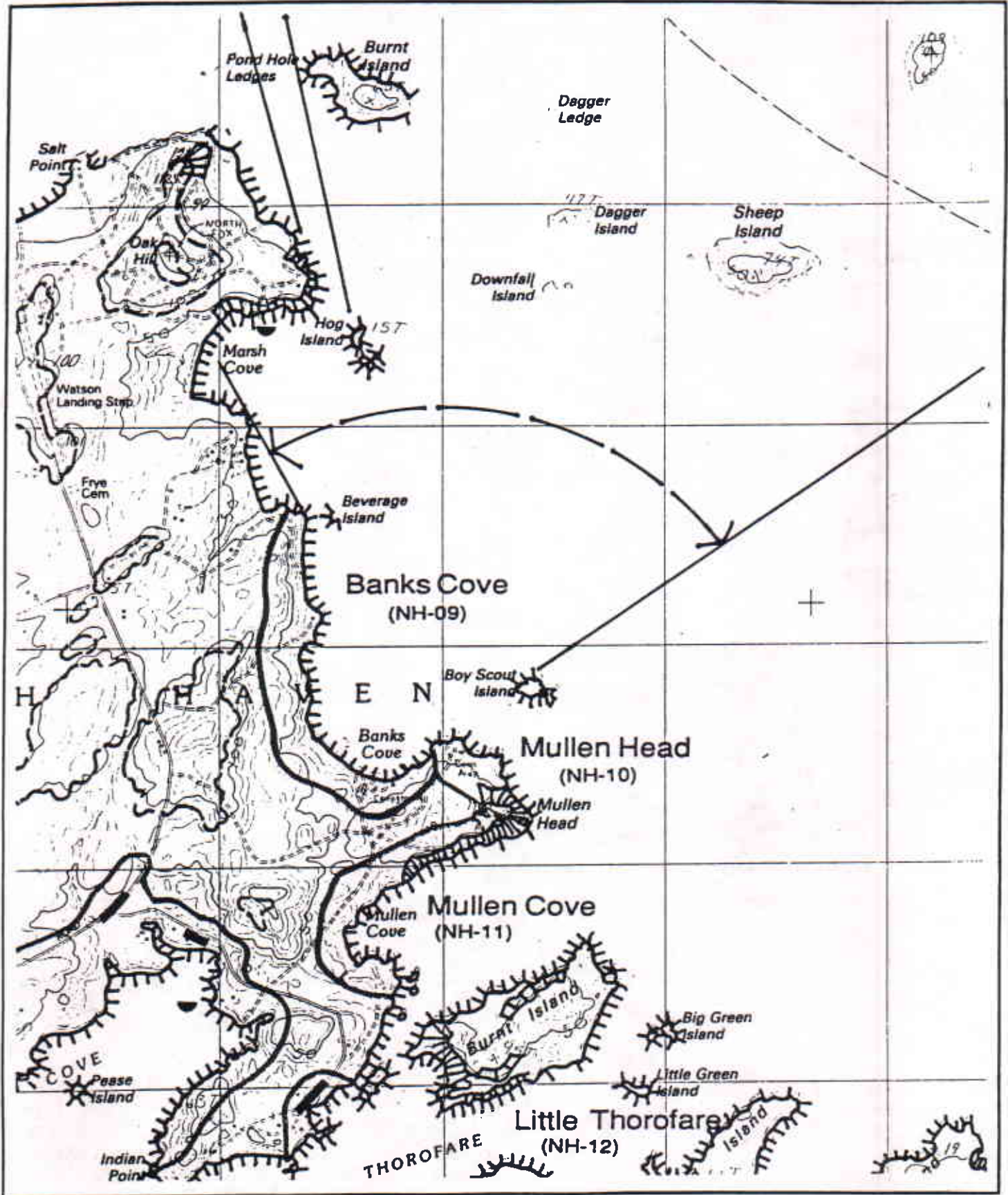


Scenic Area Location



Scenic Area Banks Cove Code NH-09
North Haven East USGS Quadrangle: 7.5 minute series

Town North Haven



Scenic Area Evaluation Form

Scenic Area **Mullen Head**
1990 Coastal Scenic Inventory

Code **NH-10**
Critical Areas Program

Town **North Haven**
Maine State Planning Office

Scenic Evaluation

SI: Special Interest
SC: Scoring
IP: Indicators Present

| SI | SC | IP |
|----|----|----|
| | | |
| | 3 | X |
| | | |
| | 3 | X |
| | 9 | X |
| | | |
| | 3 | |
| X | 9 | |
| | 9 | |
| | | 3 |
| 36 | | |

- Landform
Elevation
Slope
- Open Land
- Shoreline Configuration
- Scenic Features
- Scenic Quality of Water
Duration of View
Type of Water
Quality of Horizon
Indicators Present
Desktop Subtotal

| | |
|----|---|
| | 5 |
| | 2 |
| | 6 |
| X | 7 |
| X | 7 |
| 27 | |

- Landscape Character
Land Use
Roadside Characteristics
Settlement Characteristics
- Vegetation
- Composition & Effect
Field Evaluation

63

TOTAL SCORE

Viewshed Description

Mullen Head is the most easterly point on North Haven Island, and affords a 180 degree view of East Penobscot Bay, Babbidge Island, and other nearby islands. Of interest in the foreground is Boy Scout Island, immediately offshore, Banks Cove (see NH-09), and a small beach. The coarse pebble beach curves smoothly around the point, terminated at each end by large, lichen-covered outcrops. The head is part of a town park, with picnic facilities and hiking trails provided in a naturalistic setting. Mullen Head good location to watch the sailing activity in Penobscot Bay.

Viewshed Management Recommendations

Continued high level of maintenance.

The coarse pebble beach at Mullen Head, just south of Banks Cove.



Scenic Area Evaluation Form

Scenic Area Mullen Head
1990 Coastal Scenic Inventory

Code NH-10
Critical Areas Program

Town North Haven
Maine State Planning Office



View looking south east along the shore toward Mullen Head, Calderwood and Babbidge Island.

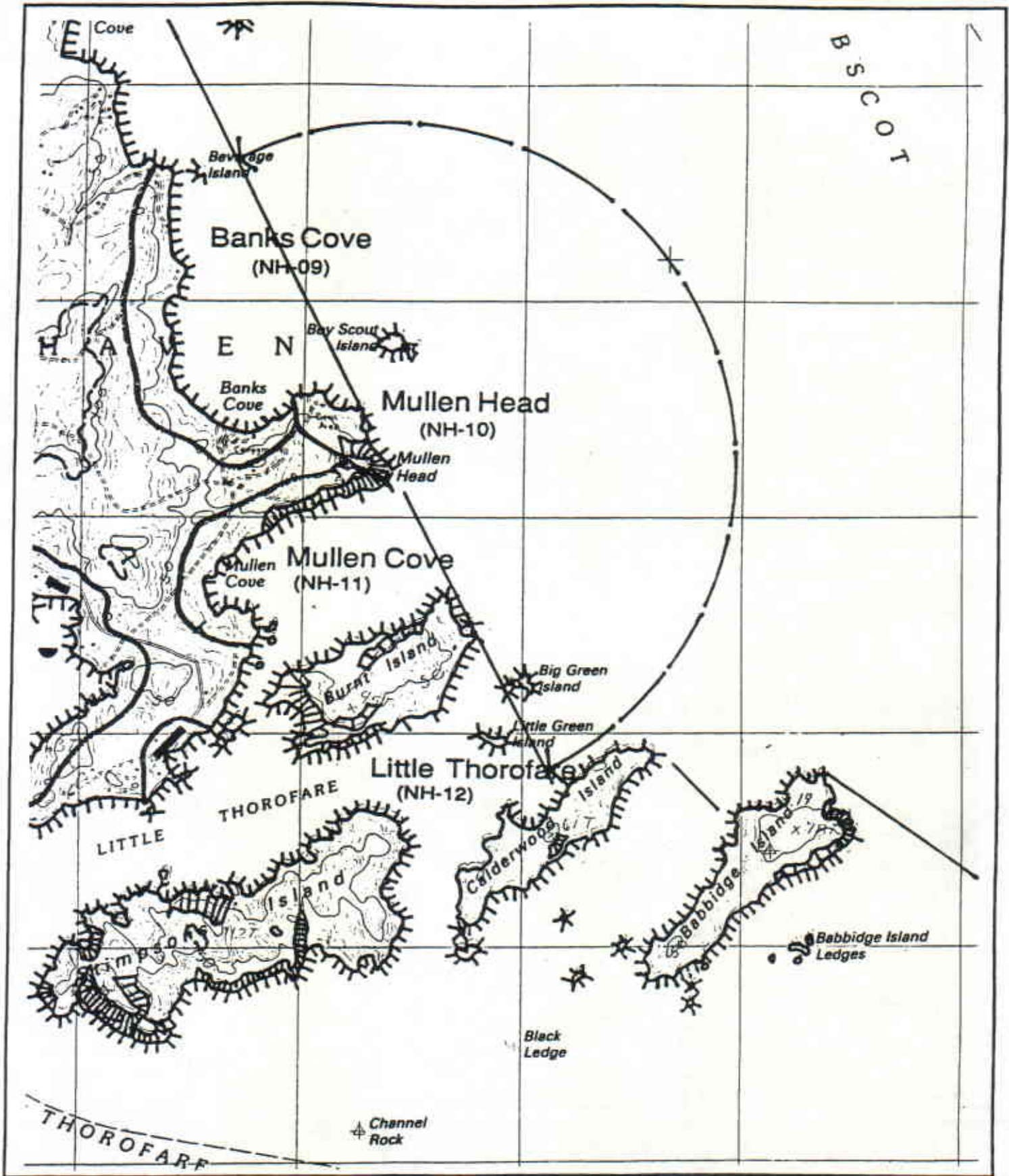


View looking North west toward Banks Cove.

Scenic Area Location



Scenic Area **Mullen Head** Code **NH-10** Town **North Haven**
North Haven East USGS Quadrangle: 7.5 minute series



Scenic Area Evaluation Form

Scenic Area **Mullen Cove**
1990 Coastal Scenic Inventory

Code **NH-11**
Critical Areas Program

Town **North Haven**
Maine State Planning Office

Scenic Evaluation

SI: Special Interest
SC: Scoring
IP: Indicators Present

| SI | SC | IP |
|----|----|----|
| | | |
| | 3 | X |
| X | 5 | X |
| | 9 | X |
| | 3 | |
| | 9 | X |
| | 9 | |
| | | 3 |
| 39 | | |

1. Landform
Elevation
Slope
2. Open Land
3. Shoreline Configuration
4. Scenic Features
5. Scenic Quality of Water
Duration of View
Type of Water
Quality of Horizon
Indicators Present
Desktop Subtotal

| | |
|----|---|
| | 7 |
| | 3 |
| | 6 |
| X | 6 |
| X | 8 |
| 30 | |
| 69 | |

6. Landscape Character
Land Use
Roadside Characteristics
Settlement Characteristics
 7. Vegetation
 8. Composition & Effect
Field Evaluation
- TOTAL SCORE**

Viewshed Description

Mullen Cove is a deep recess along the eastern face of North Haven. The gap between North Haven and Burnt Island, immediately offshore, affords a narrow view into Little Thorofare. The cove is surrounded on three sides by spruce-covered ledges that drop onto rocky beaches. On the north the town park provides good access via hiking trails and overlooks. Access to Mullen Head is difficult, however, since the trail is largely overgrown, narrow, and unmarked.

Viewshed Management Recommendations

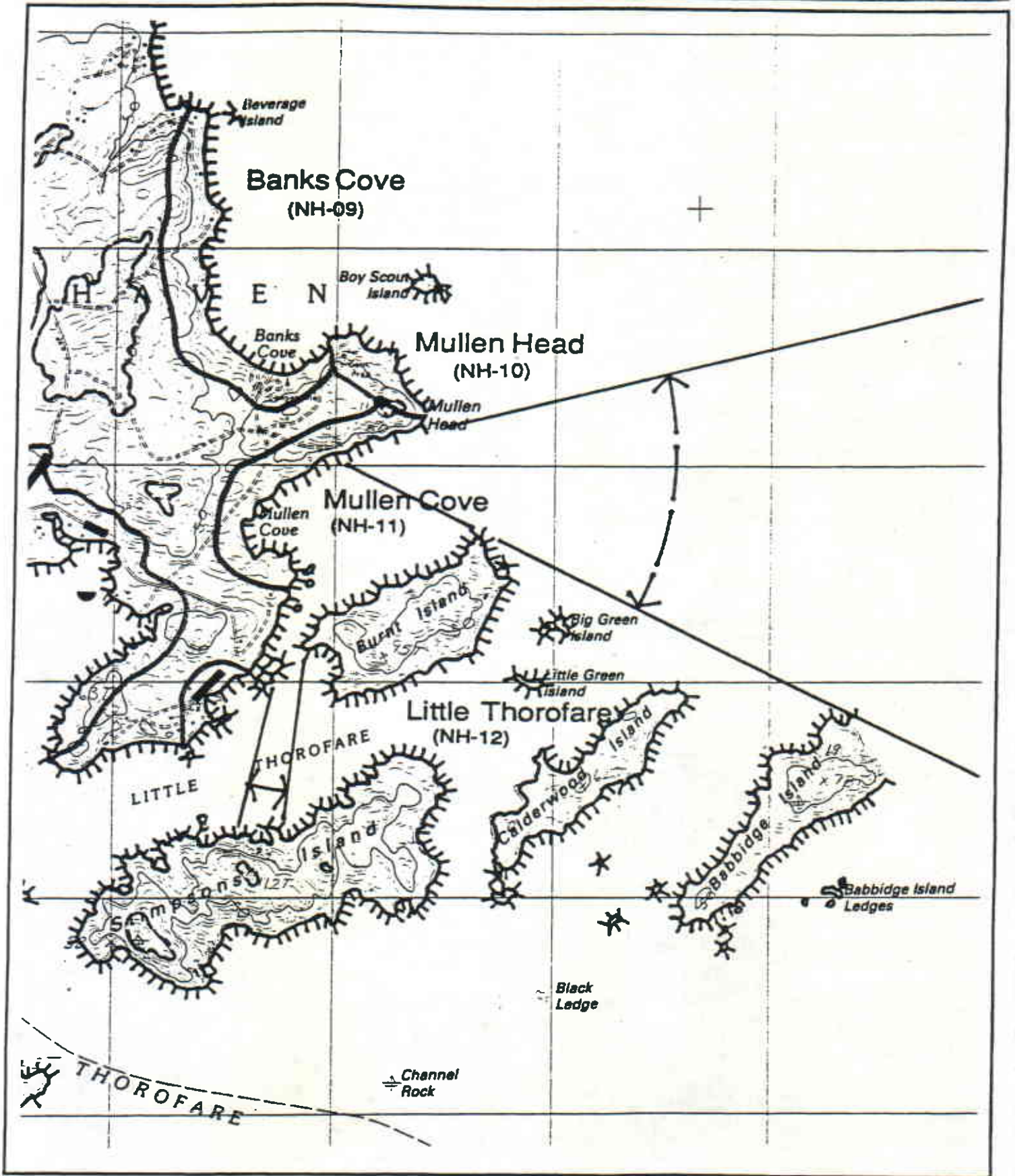
Improve footpath to Mullen Head. Continue high level of maintenance in park. Monitor paths and banks for evidence of erosion.

Mullen Cove opens into Little Thorofare between Burnt Island (on the left) and the mainland portion of North Haven. Stimpsons Island appears in the background.



Scenic Area Location

Scenic Area Mullen Cove Code NH-11 Town North Haven
North Haven East USGS Quadrangle: 7.5 minute series



Scenic Area Evaluation Form

Scenic Area **Little Thorofare**
1990 Coastal Scenic Inventory

Code **NH-12**
Critical Areas Program

Town **North Haven**
Maine State Planning Office

Scenic Evaluation

SI: Special Interest
SC: Scoring
IP: Indicators Present

| SI | SC | IP |
|--------------------|----|----|
| | | |
| | | |
| | 4 | X |
| | 6 | X |
| | 9 | X |
| | | |
| | 3 | |
| | 12 | X |
| | 6 | X |
| | | 5 |
| Indicators Present | | |
| Desktop Subtotal | | 40 |

- Landform
Elevation
Slope
- Open Land
- Shoreline Configuration
- Scenic Features
- Scenic Quality of Water
Duration of View
Type of Water
Quality of Horizon

| | |
|------------------|---|
| | 5 |
| | 3 |
| | 6 |
| X | 7 |
| X | 6 |
| Field Evaluation | |
| 27 | |

- Landscape Character
Land Use
Roadside Characteristics
Settlement Characteristics
- Vegetation
- Composition & Effect

| | |
|-------------|--|
| TOTAL SCORE | |
| 67 | |

TOTAL SCORE

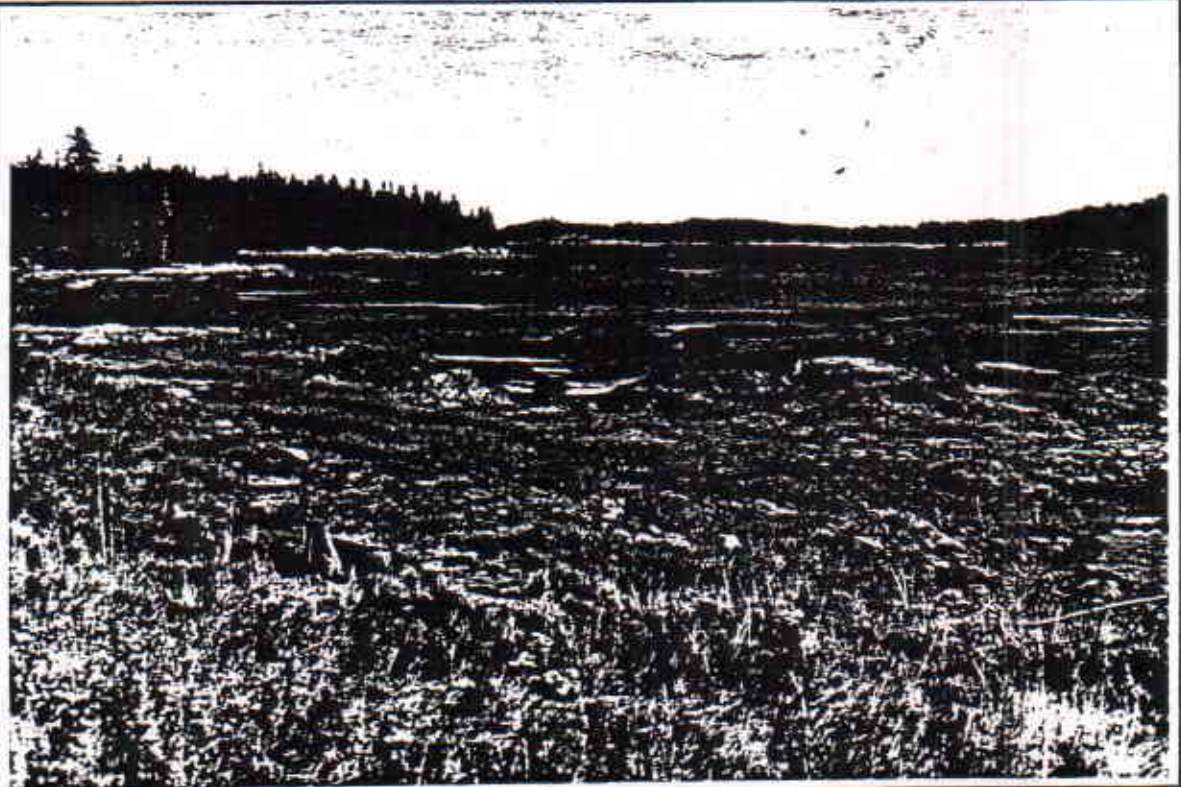
Viewshed Description

Little Thorofare is a rocky east-west passage between several large islands at the eastern end of North Haven. The public view of the passage is limited to one location near the end of Indian Point Road, just before it turns into a private drive. From this point the view includes Stimpson Island, Burnt Island, (both heavily wooded), and Calderwood Island, noted for its patterns of open fields crossing the midsection. Little Thorofare exhibits a highly configured shoreline and a considerable number of small islands and ledges, which add considerable interest with the changing tide. Evergreen stands cover each point and the small island providing a striking contrast with the weathered rock outcrops. Colorful patterns are created by the seaside sedges and grasses and the pink rocks in the foreground. One house is visible on Stimpsons Island.

Viewshed Management Recommendations

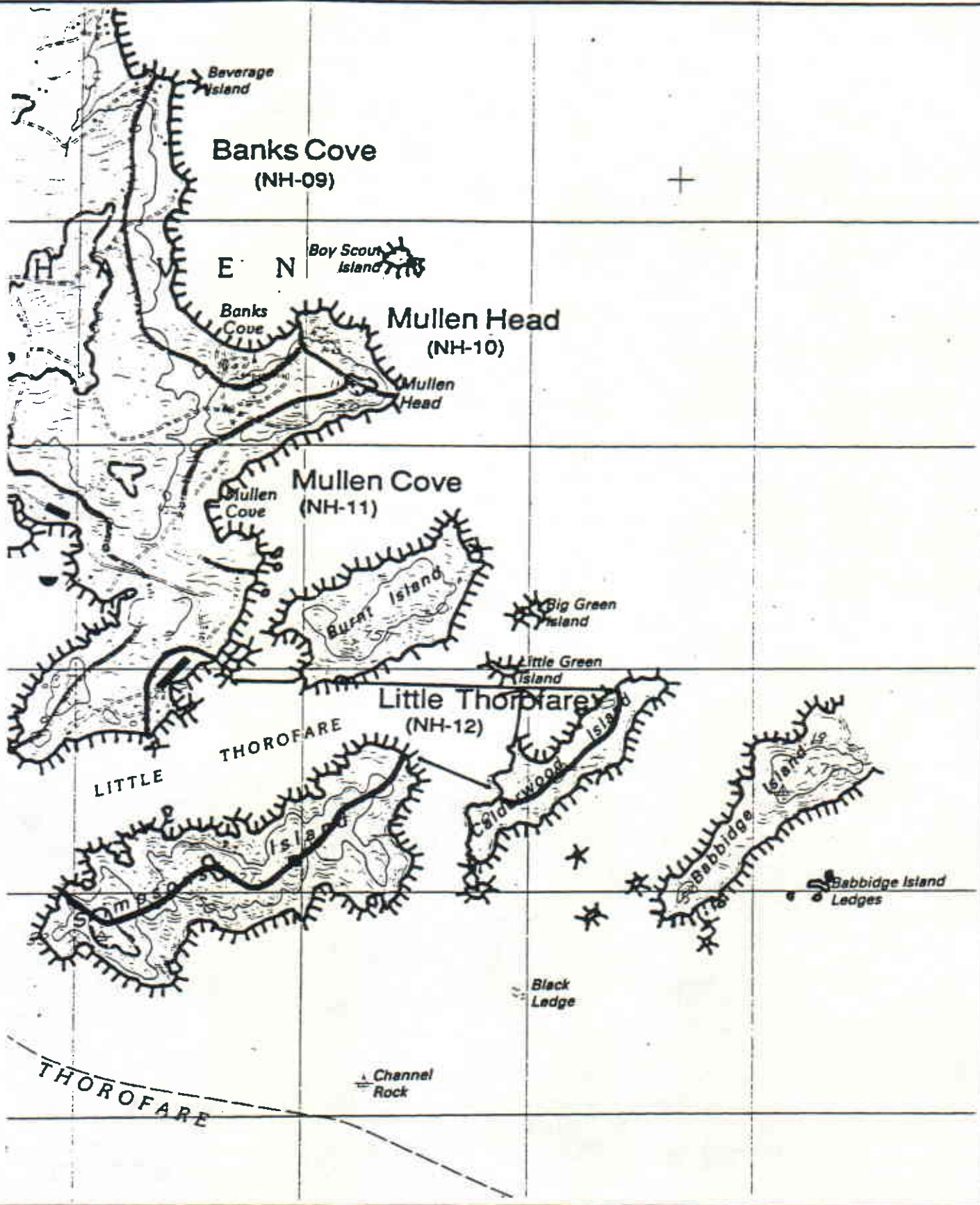
Conservation easements to protect viewshed of Little Thorofare.

Views into Little Thorofare are enclosed by Burnt Island (on the left), Calderwood Island (in the center with the open fields), and Stimpsons Island (on the right).



Scenic Area Location

Scenic Area **Little Thorofare** Code **NH-12** Town **North Haven**
North Haven East USGS Quadrangle: 7.5 minute series



Scenic Area Evaluation Form

Scenic Area **Kent Cove**
1990 Coastal Scenic Inventory

Code **NH-13**
Critical Areas Program

Town **North Haven**
Maine State Planning Office

Scenic Evaluation

SI: Special Interest
SC: Scoring
IP: Indicators Present

| SI | SC | IP |
|--------------------|----|----|
| | 3 | X |
| | 6 | X |
| | 3 | |
| X | 9 | X |
| | 6 | |
| | 9 | X |
| | 9 | X |
| | | 5 |
| Indicators Present | | |
| Desktop Subtotal | | 48 |

1. Landform
Elevation
Slope
2. Open Land
3. Shoreline Configuration
4. Scenic Features
5. Scenic Quality of Water
Duration of View
Type of Water
Quality of Horizon

| | |
|----|---|
| X | 6 |
| | 3 |
| X | 6 |
| | 7 |
| X | 8 |
| 30 | |
| 78 | |

6. Landscape Character
Land Use
Roadside Characteristics
Settlement Characteristics
7. Vegetation
8. Composition & Effect
Field Evaluation

TOTAL SCORE

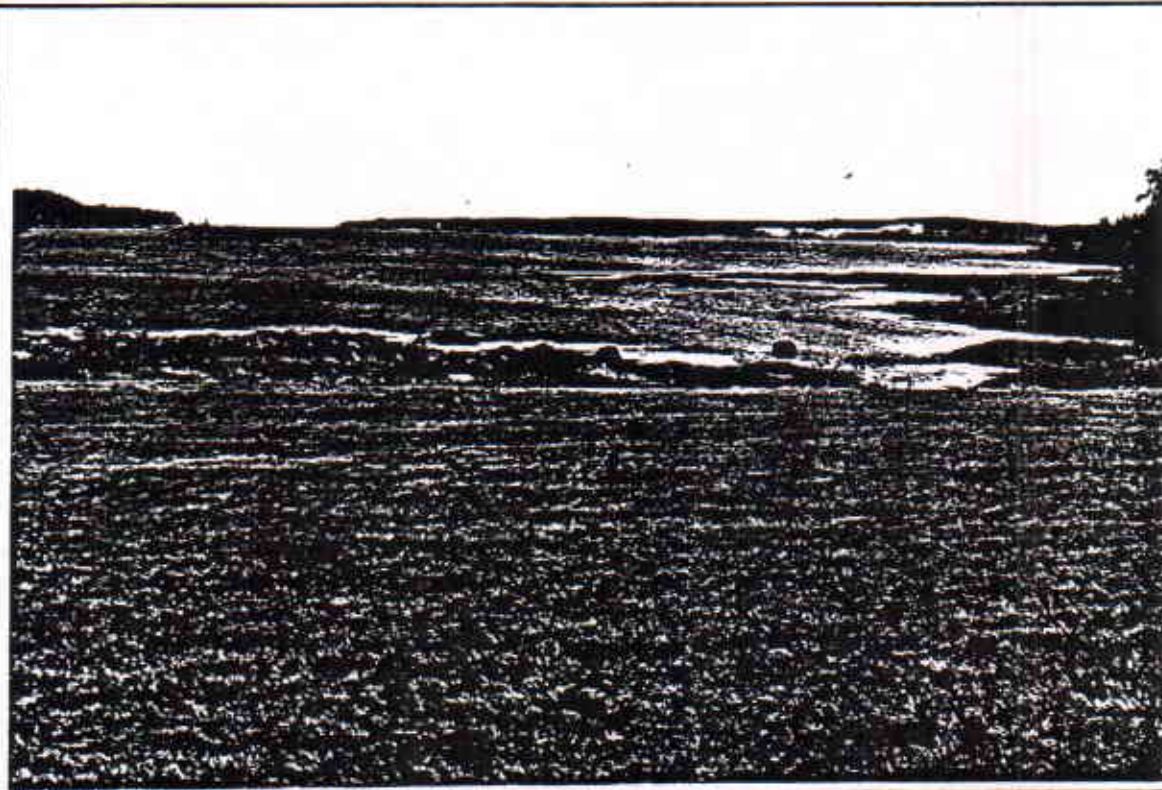
Viewshed Description

The view of Kent Cove from the South Shore Road is one of the longest enclosed views in Penobscot Bay. The viewshed extends out to the north shore of Vinalhaven, and includes Calderwood Point, Widow Island, Stimpsons Island, and Indian Point. The foreground is a classic island pastoral landscape: an old homestead, a family cemetery (Kent) on the hillside, freestanding mature trees, and rolling fields extending to the shoreline.

Viewshed Management Recommendations

Vegetation management to maintain open fields. Conservation easement on open fields. Continued maintenance for cemetery.

View of Kent Cove at the base of Apple Tree Hill on South Shore Road. Goose Rocks Lighthouse can be seen to the right of the Fox Islands Thorofare passage around Vinalhaven.

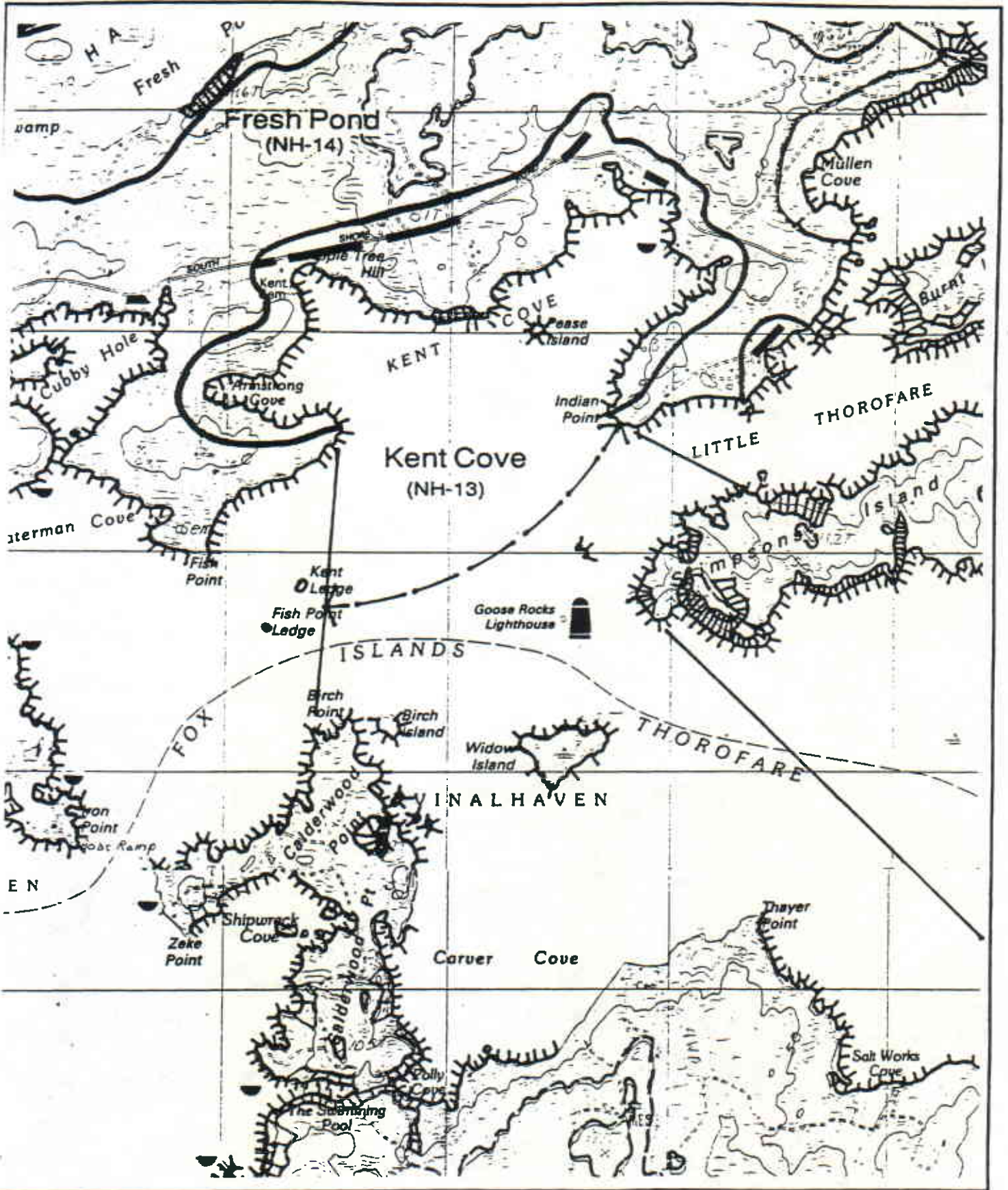


Scenic Area Location

Scenic Area Kent Cove
North Haven East USGS Quadrangle: 7.5 minute series

Code NH-13

Town North Haven



Scenic Area Evaluation Form

Scenic Area **Fresh Pond**
 1990 Coastal Scenic Inventory

Code **NH-14**
 Critical Areas Program

Town **North Haven**
 Maine State Planning Office

Scenic Evaluation

SI: Special Interest
 SC: Scoring
 IP: Indicators Present

| SI | SC | IP |
|----|----|----|
| | | |
| | | |
| X | 6 | X |
| | 6 | X |
| | 3 | |
| | | |
| | 6 | |
| | 6 | |
| | 3 | |
| | | 2 |
| | 28 | |

- 1. Landform
Elevation
Slope
- 2. Open Land
- 3. Shoreline Configuration
- 4. Scenic Features
- 5. Scenic Quality of Water
Duration of View
Type of Water
Quality of Horizon
- Indicators Present
- Desktop Subtotal

| | |
|--|----|
| | 6 |
| | 6 |
| | 6 |
| | 6 |
| | 7 |
| | 31 |

- 6. Landscape Character
Land Use
Roadside Characteristics
Settlement Characteristics
- 7. Vegetation
- 8. Composition & Effect
- Field Evaluation

| |
|----|
| 59 |
|----|

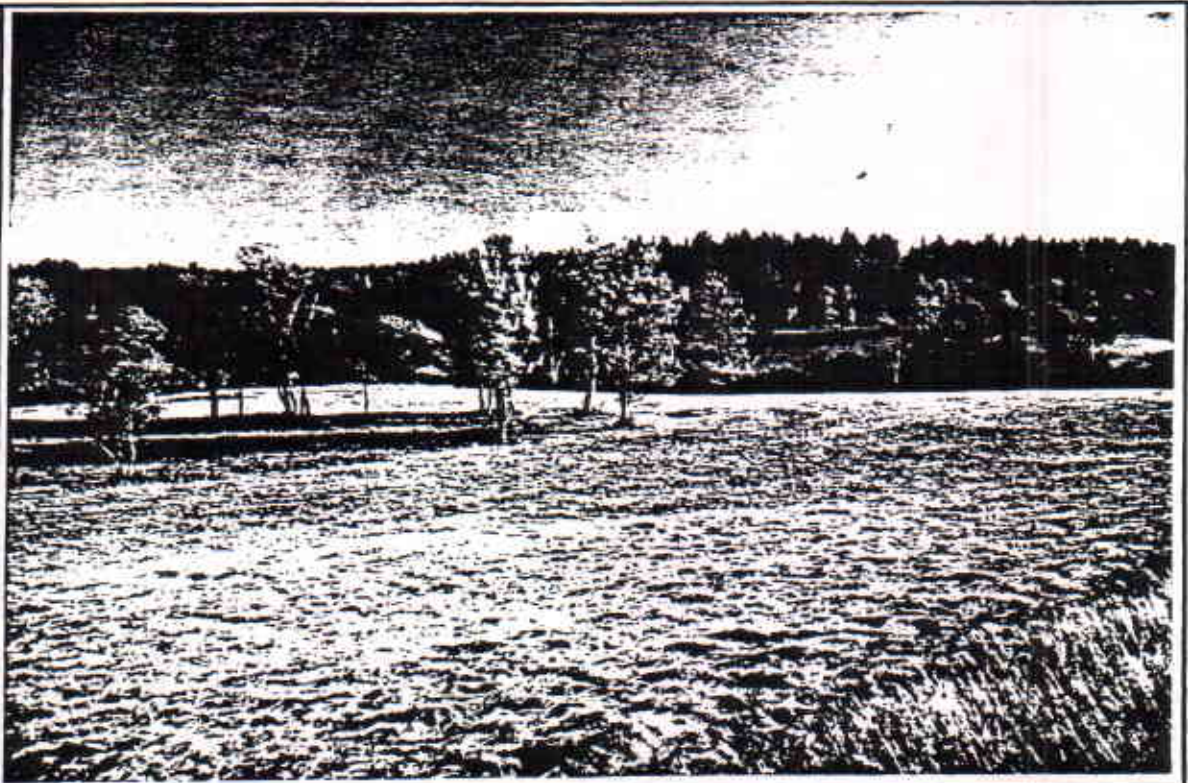
TOTAL SCORE

Viewshed Description

Fresh Pond, as its name implies, is an inland water-body near the center of the island. Located among rolling fields, the pond provides a focal point for the Middle Road. Little residential development is visible from the road. Sweeping views are found along much of the road. The viewshed also includes smaller Salt Pond on the northern side of Middle Road.

Viewshed Management Recommendations

Continued maintenance of open fields.



Fresh Pond is the largest freshwater pond on the island. View from Middle Road looking south.

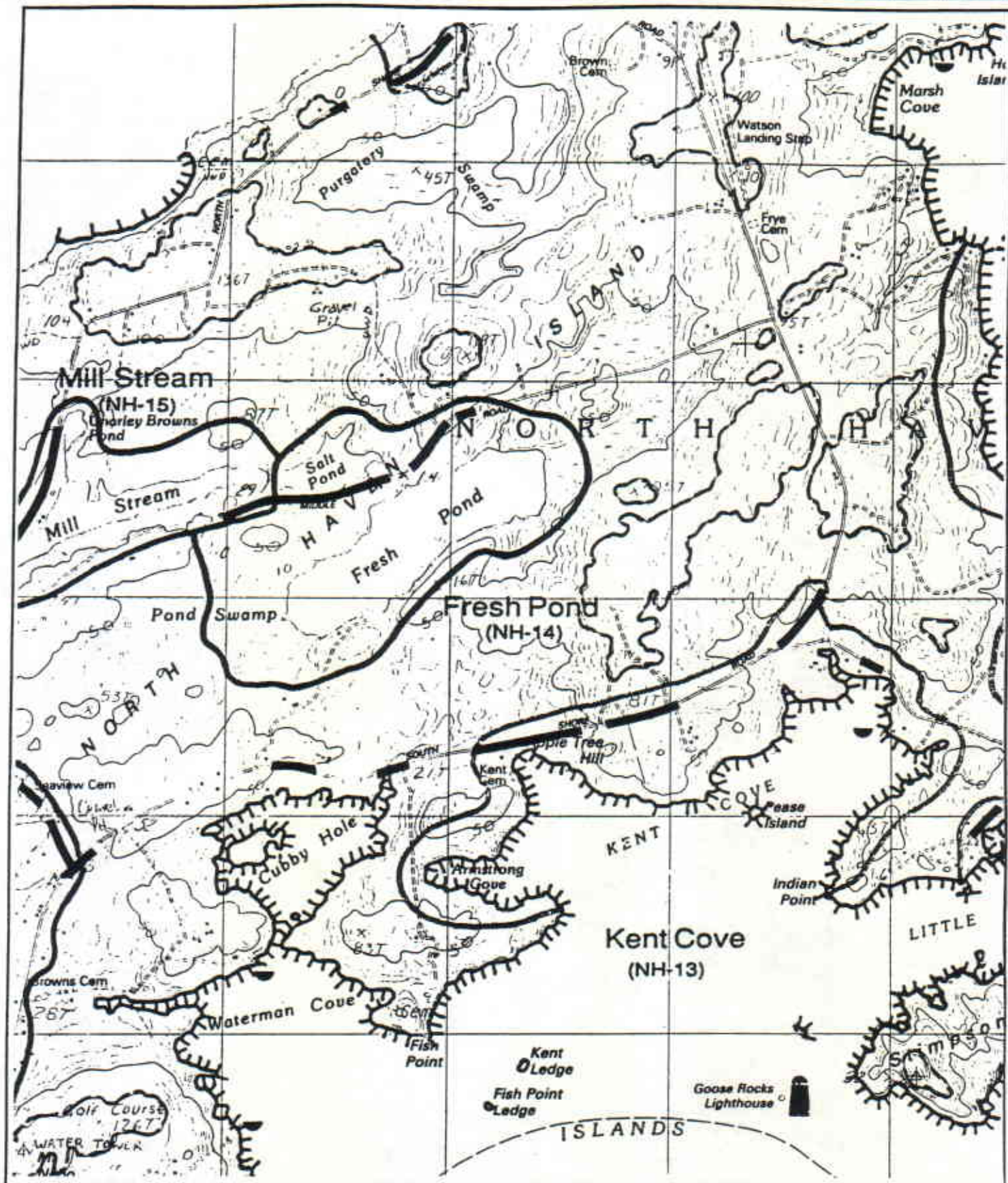
Scenic Area Location

Scenic Area **Fresh Pond**

Code **NH-14**

Town **North Haven**

North Haven East USGS Quadrangle: 7.5 minute series



Scenic Area Evaluation Form

Scenic Area **Mill Stream**
1990 Coastal Scenic Inventory

Code **NH-15**
Critical Areas Program

Town **North Haven**
Maine State Planning Office

Scenic Evaluation

SI: Special Interest
SC: Scoring
IP: Indicators Present

| SI | SC | IP |
|----|----|----|
| | | |
| | | |
| | 3 | |
| | 6 | X |
| | 6 | X |
| | | |
| | 6 | |
| | 6 | |
| | 3 | |
| | | 2 |
| | 30 | |

1. Landform
Topography
Slope
 2. Open Land
 3. Shoreline Configuration
 4. Scenic Features
 5. Scenic Quality of Water
Duration of View
Type of Water
Quality of Horizon
Indicators Present
- Desktop Subtotal

| | |
|---|----|
| | 6 |
| | 3 |
| X | 6 |
| | 6 |
| | 7 |
| | 28 |

6. Landscape Character
Land Use
Roadside Characteristics
Settlement Characteristics
 7. Vegetation
 8. Composition & Effect
- Field Evaluation

| |
|----|
| 58 |
|----|

TOTAL SCORE

Viewshed Description

Mill Stream is actually a narrow tidal pond at the head of Pulpit Harbor. Public views are found along a considerable section of the North Shore Road. The best vantage point is from the bridge over the stream, where there are views in both directions (including a dramatic view into Pulpit Harbor) mowed field areas among the evergreen trees. Residential development, in the form of open fields, docks, and a few well sited homes, are visible from a number of vantage points.

Viewshed Management Recommendations

Strict adherence to shoreland zoning regulations.

Mill Stream is a narrow tidal channel that flows into Pulpit Harbor. View from the highway bridge looking northeast.



Scenic Area Location

Scenic Area **Mill Stream** Code **NH-15** Town **North Haven**
North Haven East USGS Quadrangle: 7.5 minute series

