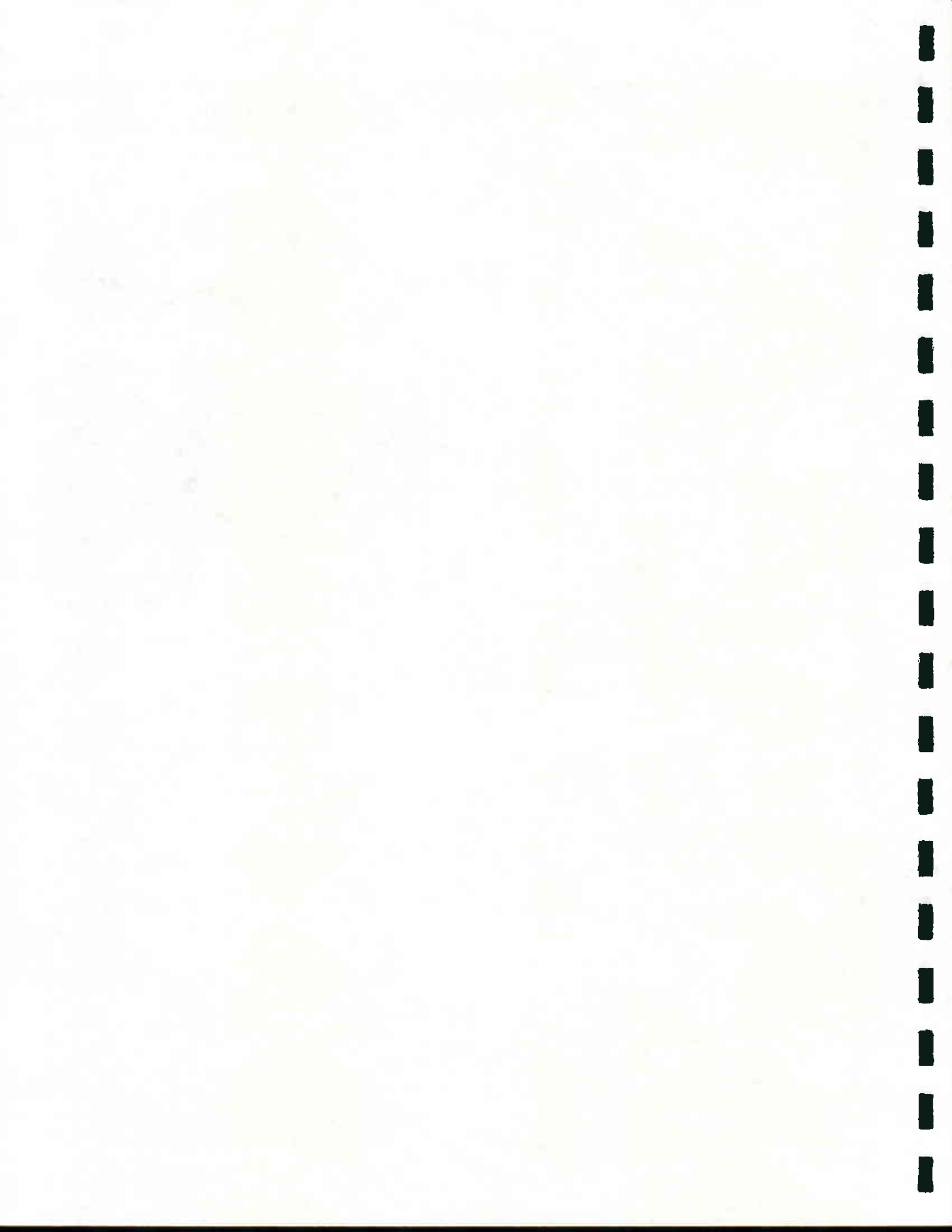


VINALHAVEN



Carver's Harbor
Carver's Pond
Sand Cove
Indian Creek
Lane Island
Old Harbor
Barton Island
The Basin
Isle Au Haut Mountain
Vinal Cove
Crockett Cove
Brown's Head
Fox Island Thorofare
Mill River
Winter Harbor
Geary's Beach
Arey Cove
Ambrust Hill



VINALHAVEN

Vinalhaven is rich in history and strong in character, with a tremendous variety of landscapes throughout its 23 square miles. Vinalhaven and North Haven collectively are known as the Fox Islands, and are joined (or separated) by the Fox Islands Thorofare. Separate ferry for each island is available from Rockland.

The following is an overview of the island's visual character:

- Land use on the island can be categorized into several distinct patterns:
 - The town of Vinalhaven, with its working waterfront and distinctive neighborhoods
 - Medium density residential areas, often with a strong orientation to a small cove
 - Rural residential areas, with remnants of old farms and rolling fields
 - Enclosed woodlands and extensive wetlands
- The history of Vinalhaven is closely tied to the granite cutting industry. Throughout the island are many reminders and mementos of a time when stonecutting was the principal form of employment, an era that ended in 1939. Granite is found in the wharfs, horse troughs, foundations, walls, and the cemeteries, as well as in the old quarries.
- While there is a well developed road network throughout the island, there are relatively few areas to see water from public viewpoints.
- The major landmarks on the island are both natural and cultural: the town of Vinalhaven and Carvers Harbor, Lane Island, Geery's Beach, Winter Harbor, Fox Island Thorofare, Brown's Point Lighthouse, Tiptoe Mountain and Crockett Cove, The Basin, and The Reach.
- The entire island is surrounded by deeply indented coves, inlets, necks, and a multitude of smaller islands. The highly configured shoreline is the source of great visual interest as seen from public viewpoints on the land. Vinalhaven resembles Deer Isle in the number and depths of its coves and bays.
- The southeastern quadrant of the island is relatively flat, with hills and promontories the exception. Much of the land away from the coast is undeveloped woodland and wetlands, and of little visual interest. The eastern shoreline is exposed to the full force of the Atlantic Ocean, broken only by a few small barren islands.

- By contrast, the western and northern portions of the island is characterized by rolling to steep topography, with several prominent hills up to elevation 200. Tiptoe Mountain and Isle Au Haut Mountain both have provisions for public access that afford panoramic views of Penobscot Bay.
- The town of Vinalhaven is a distinctive Maine fishing village: protected harbor ringed with marine-dependant uses, backed by wood frame homes on the surrounding hillsides. The village is made up of many distinct areas that were evaluated for Critical Areas designation: Carvers Harbor, Carvers Pond, Sand Cove, Indian Creek, Lane Island, and Ambrust Hill.
- Vinalhaven is a working community, with a predominance of modest, well kept homes. The island has very few of the stately, historic cottages that characterize Islesboro and to a lesser extend North Haven. The exception is the small colony of summer homes lining Fox Island Thorofare, the channel that separates Vinalhaven from North Haven.
- The approach through The Reach, with its bold islands and indented coves, contributes to Islesboro's great sense of place. The hour-long journey from the mainland creates a great sense of expectation. The boater is likely to encounter lobster boats and kayaks, the Islesboro ferry and great sailing schooners plying the waters.

Scenic Area Evaluation Form

Scenic Area **Carvers Harbor**
1990 Coastal Scenic Inventory

Code **VI-01A**
Critical Areas Program

Town **Vinalhaven**
Maine State Planning Office

Scenic Evaluation

SI: Special Interest
SC: Scoring
IP: Indicators Present

SI	SC	IP
	2	
	3	
	6	X
X	9	XX
	9	
	12	
X	9	X
Indicators Present		
Desktop Subtotal		51

1. Landform
Elevation
Slope
2. Open Land
3. Shoreline Configuration
4. Scenic Features
5. Scenic Quality of Water
Duration of View
Type of Water
Quality of Horizon

	6
	3
	6
X	6
X	7
	28

6. Landscape Character
Land Use
Roadside Characteristics
Settlement Characteristics
7. Vegetation
8. Composition & Effect
Field Evaluation

	79
--	----

TOTAL SCORE

Viewshed Description

The town of Vinalhaven and its harbor is one of the most memorable images along the coast of Maine. Carvers Harbor, which acts as the public gateway into town, is a highly unified, visually intact landscape, consisting of clusters of wooden buildings lining the water front, small homes at the base of low hills, and rhythmic pattern of weathered wooden pilings. The harbor is a dynamic mixture of fishing boats and pleasure craft. Evidence of the island's rich history in granite cutting is everywhere: from wharfs and walls to tailings and remnants. Grimes Park, which marks the southwestern tip of the harbor, is accessible by a footpath near the ferry terminal. The park features a small picnic area overlooking Sand Cove and several paths that wind through dense evergreens out to Smith point. Smooth outcrops and large boulders line the shore with clumps of roses sprouting from the cracks. Visitors are rewarded with spectacular views of the harbor, Potato Island, and the everpresent boat traffic, including graceful schooners passing through the Reach.

Viewshed Management Recommendations

Maintain scale of the town through careful review of site plan applications. General maintenance on the ferry terminal.

The entrance to Carvers Harbor, as seen from Grimes Park, is protected by Potato Island and several smaller land masses.



Scenic Area Evaluation Form

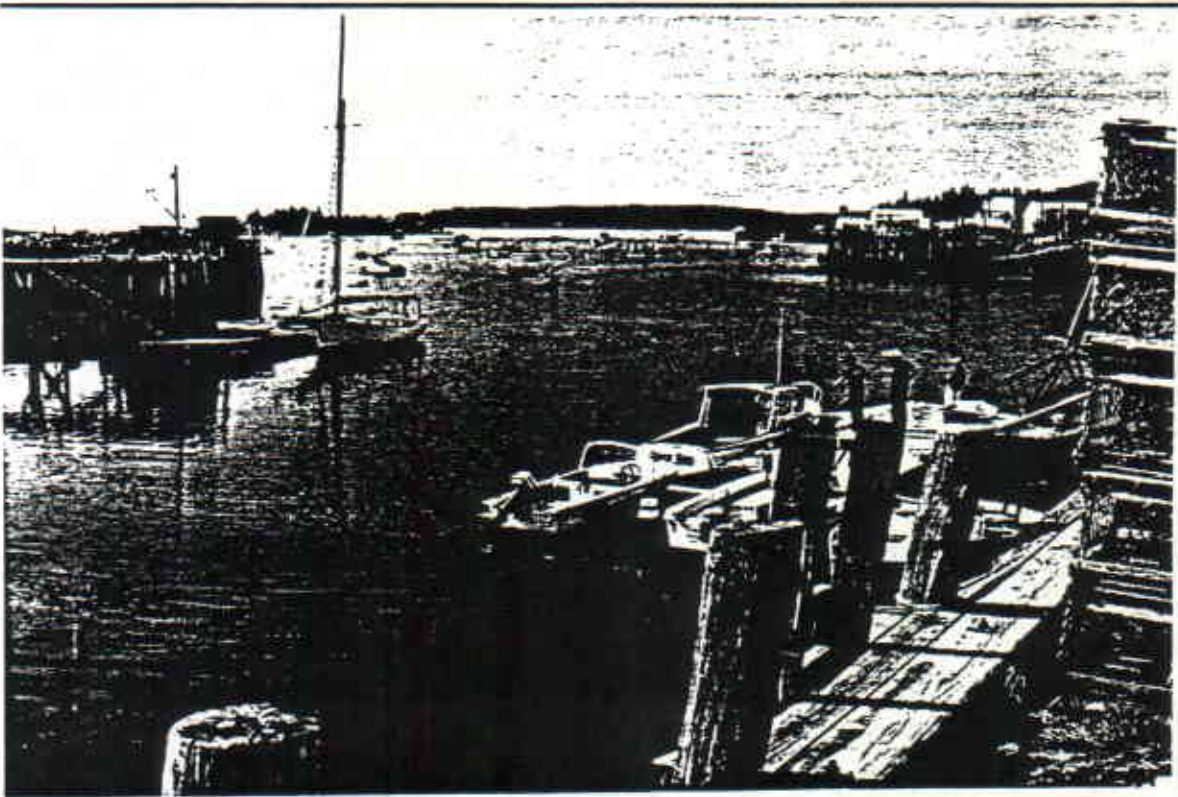
Scenic Area Carver's Harbor
1990 Coastal Scenic Inventory

Code VI-01A
Critical Areas Program

Town Vinalhaven
Maine State Planning Office



Ambrust Hill Wildlife Reservation defines the eastern end of the harbor, providing a green backdrop to the activity at the edge of the water.



View looking south to Lane's Island from the town pier.

Scenic Area Evaluation Form

Scenic Area **Carvers Pond**
1990 Coastal Scenic Inventory

Code **VI-01B**
Critical Areas Program

Town **Vinalhaven**
Maine State Planning Office

Scenic Evaluation

SI: Special Interest
SC: Scoring
IP: Indicators Present

SI	SC	IP
	6	X
	9	X
	6	X
	6	X
	6	X
		5
33		

1. Landform
 - Elevation
 - Slope
 2. Open Land
 3. Shoreline Configuration
 4. Scenic Features
 5. Scenic Quality of Water
 - Duration of View
 - Type of Water
 - Quality of Horizon
- Indicators Present
Desktop Subtotal

	6
	3
X	6
	6
	7
28	

6. Landscape Character
 - Land Use
 - Roadside Characteristics
 - Settlement Characteristics
7. Vegetation
8. Composition & Effect
Field Evaluation

61	
----	--

TOTAL SCORE

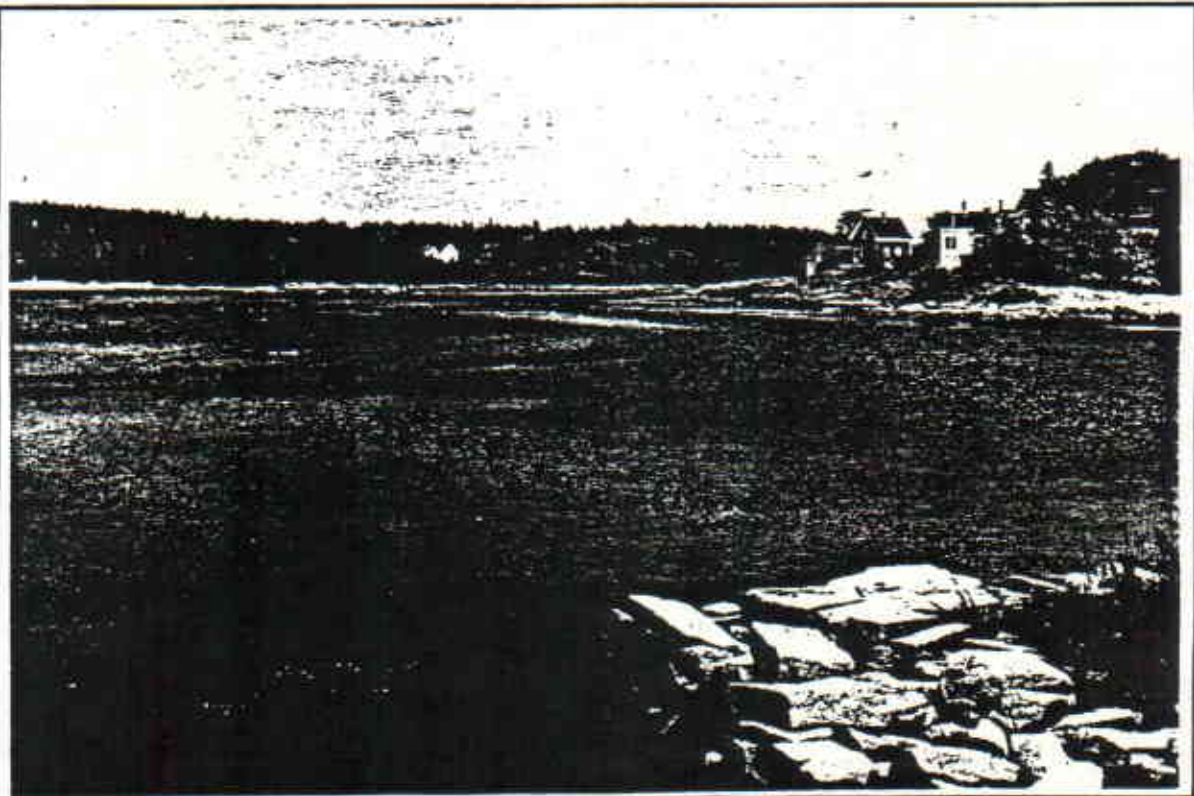
Viewshed Description

Carvers Pond is a large, but relatively secluded, inland waterbody covering almost 150 acres on the north side of the village. The landscape is characterized by a highly configured shoreline, rolling topography, and a few scattered wood-framed homes. The pond is connected to the main harbor by a reversing falls in the middle of town. In-town views are limited to short glimpses that are framed by the commercial buildings on Main Street. The best views of the pond are found along the North Haven Road. However, the quality of the scene is detracted by rusty construction equipment at the edge of the water.

Viewshed Management Recommendations

Strict enforcement of shoreland zoning. Acquisition of conservation easements within the viewshed of the pond. General clean-up of shoreline along the North Haven Road.

High tide view of Carvers Pond from center of Vinalhaven Village.



Scenic Area Location

Scenic Area Carvers Pond Code VI-01B
Vinalhaven USGS Quadrangles: 7.5 minute series

Town Vinalhaven



Scenic Area Evaluation Form

Scenic Area **Sand Cove**
1990 Coastal Scenic Inventory

Code **VI-01C**
Critical Areas Program

Town **Vinalhaven**
Maine State Planning Office

Scenic Evaluation

SI: Special Interest
SC: Scoring
IP: Indicators Present

SI	SC	IP
	2	
	6	X
	9	XX
	6	X
	12	X
	9	X
		6
Indicators Present		
Desktop Subtotal		44

	5
	3
	7
X	7
	7
	29

73

- Landform
Elevation
Slope
 - Open Land
 - Shoreline Configuration
 - Scenic Features
 - Scenic Quality of Water
Duration of View
Type of Water
Quality of Horizon
Indicators Present
Desktop Subtotal
 - Landscape Character
Land Use
Roadside Characteristics
Settlement Characteristics
 - Vegetation
 - Composition & Effect
Field Evaluation
- TOTAL SCORE**

Viewshed Description

Sand Cove is a highly configured waterbody just west of the village. The eastern shoreline has been used for lobstering, granite cutting, and other water-dependant uses. The western shoreline is virtually undeveloped, consisting of low hills covered with dark evergreens. Norton Point is the most prominent landform, and marks the entrance into Vinalhaven Harbor from The Reach. Foreground interest is generated by large bleached stones, meadow grasses, and abandoned lobster traps.

Viewshed Management Recommendations

Conservation easements to protect Norton Point.
Strict application of shoreland zoning.

Lobster shacks and granite wharves attest to the mainstays of Vinalhaven. View looking south into Sand Cove.



Scenic Area Evaluation Form

Scenic Area Sand Cove
1990 Coastal Scenic Inventory

Code VI-01C
Critical Areas Program

Town Vinalhaven
Maine State Planning Office



Sand Cove is defined on the west by low rocky hills and dense evergreen cover.



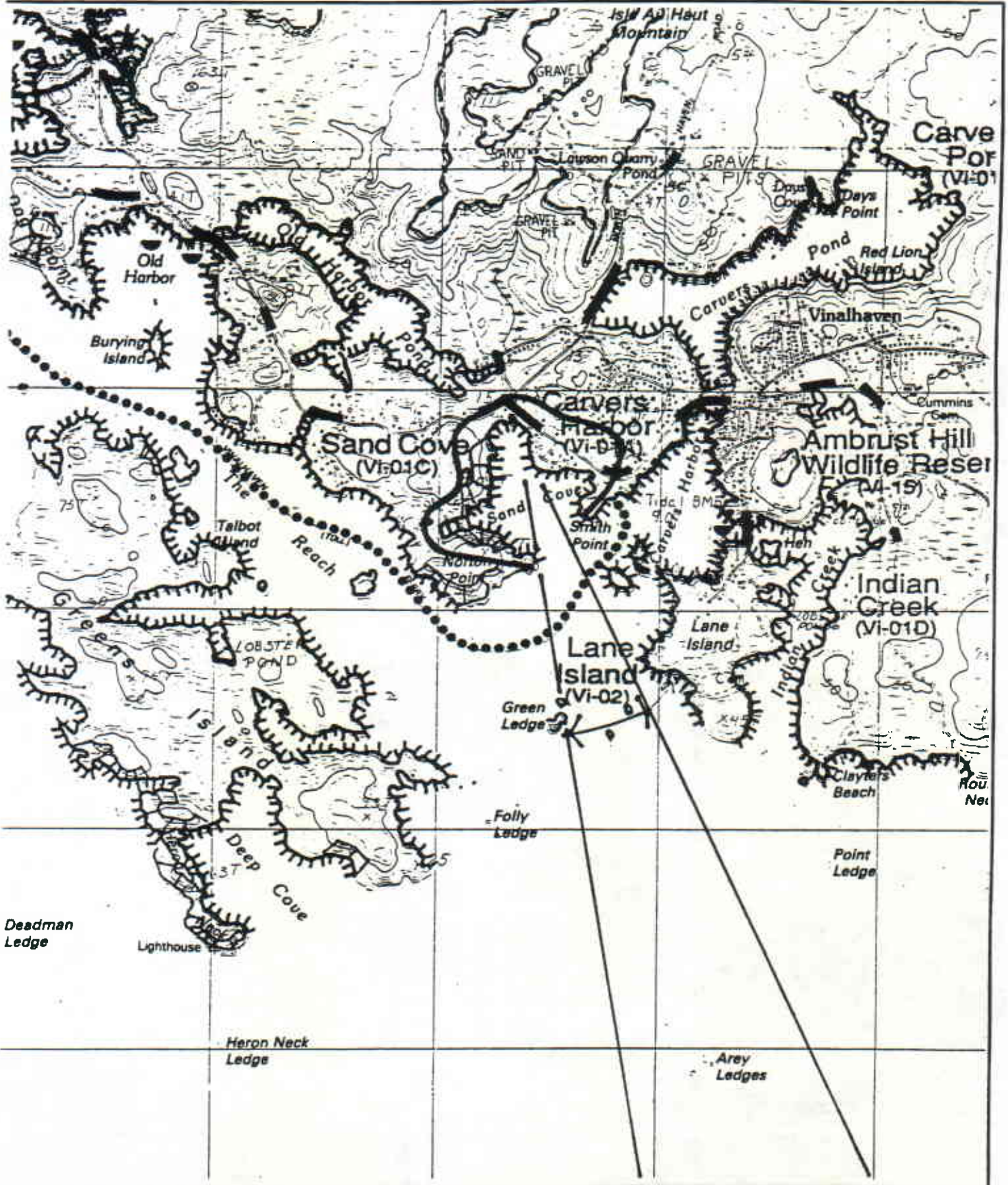
Norton Point, as seen from Smith Point, marks the entrance into Vinalhaven Harbor.

Scenic Area Location

Scenic Area Sand Cove
Vinalhaven USGS Quadrangles: 7.5 minute series

Code VI-01C

Town Vinalhaven



Scenic Area Evaluation Form

Scenic Area **Indian Creek**
1990 Coastal Scenic Inventory

Code **VI-01D**
Critical Areas Program

Town **Vinalhaven**
Maine State Planning Office

Scenic Evaluation

SI: Special Interest
SC: Scoring
IP: Indicators Present

SI	SC	IP
	4	X
X	6	X
X	9	XX
	3	X
X	6	X
	9	X
		7
37		

- Landform
Elevation
Slope
- Open Land
- Shoreline Configuration
- Scenic Features
- Scenic Quality of Water
Duration of View
Type of Water
Quality of Horizon
Indicators Present
Desktop Subtotal

	7
	4
X	7
X	7
X	8
33	

- Landscape Character
Land Use
Roadside Characteristics
Settlement Characteristics
- Vegetation
- Composition & Effect
Field Evaluation

70

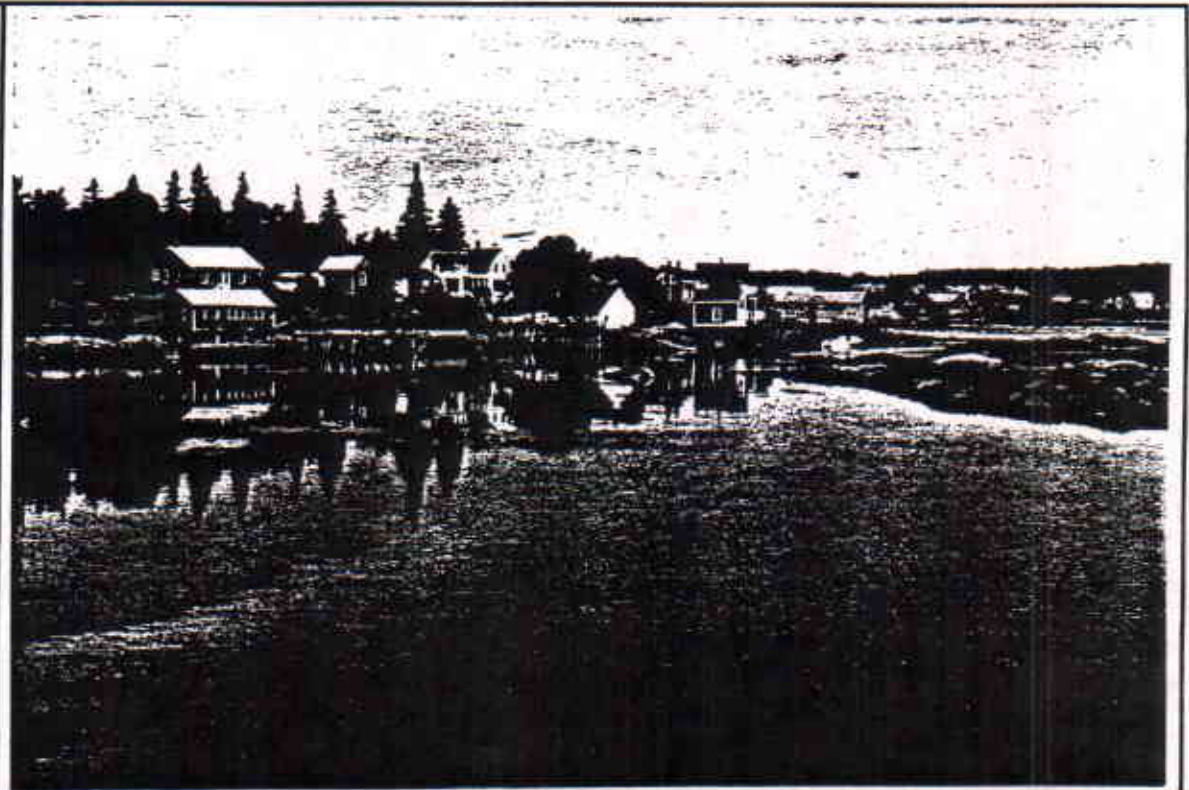
TOTAL SCORE

Viewshed Description

The Indian Creek viewshed contains most of the elements associated with the Maine fishing village: picturesque waterfront homes and commercial buildings, wooden pilings, small islands, spruce covered hillsides, fishing boats, and flocks of gulls screaming overhead. While this portion of the village is less compact than Carvers Harbor, it exhibits the same sense of vividness and intactness. Indian Creek is calm sheltered area offering a bit of respite from the main harbor immediately to the west. The creek marks the transition from the village of Vinalhaven to the remote, unspoiled grandeur of Lane Island. Views into Carver's Harbor are limited by the curve in the road, shoreline configuration, and waterfront development. The bridge is a unique collection of granite slabs, concrete pilings, painted steel guardrail, and wire cables.

Viewshed Management Recommendations

Conservation easements to protect the viewshed of Indian Creek, Lane Island, and the Wildlife Reservations. Strict application of shoreland zoning. Any improvements to the bridge, approach road, or guardrail should be sensitive to its picturesque character and unique design.



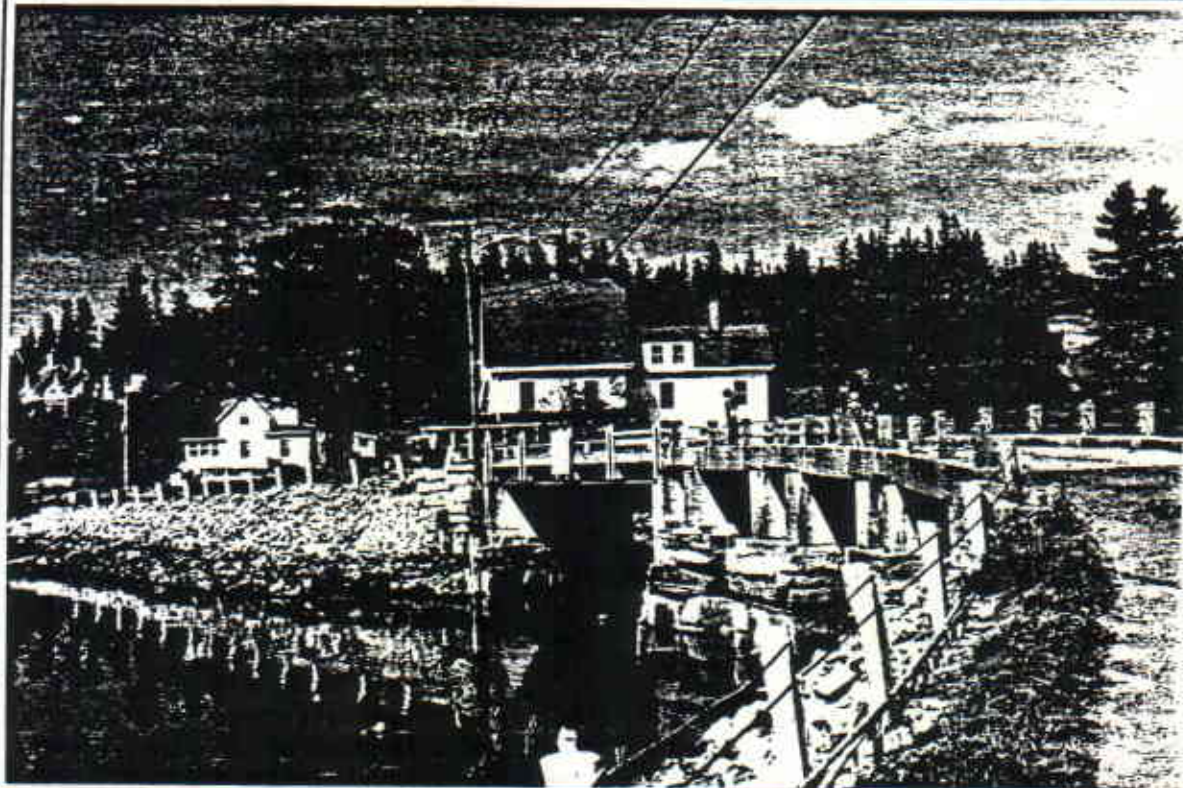
Easterly view of Indian Creek as seen from the Lane Island bridge.

Scenic Area Evaluation Form

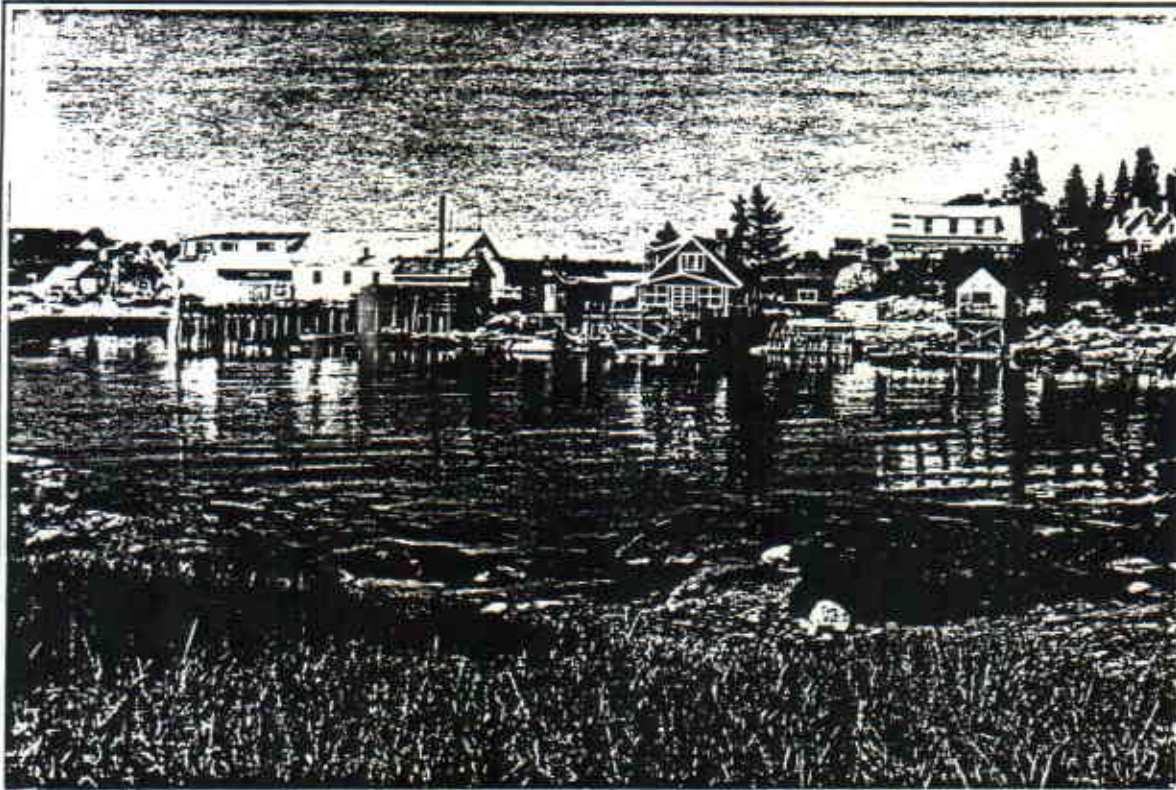
**Scenic Area Indian Creek
1990 Coastal Scenic Inventory**

**Code VI-01D
Critical Areas Program**

**Town Vinalhaven
Maine State Planning Office**



The Lane Island Bridge is an eclectic mixture of granite, concrete, and steel.



The westerly view from the Lane Island Bridge toward Carvers Harbor.

Scenic Area Location

Scenic Area Indian Creek
Vinalhaven USGS Quadrangles: 7.5 minute series

Code VI-01D

Town Vinalhaven



Scenic Area Evaluation Form

Scenic Area **Lane Island**
1990 Coastal Scenic Inventory

Code **VI-02**
Critical Areas Program

Town **Vinalhaven**
Maine State Planning Office

Scenic Evaluation

SI: Special Interest
SC: Scoring
IP: Indicators Present

SI	SC	IP
X	6	X
	6	X
X	9	X
X	9	X
	12	X
X	9	X
		6
		51

1. Landform
Elevation
Slope
2. Open Land
3. Shoreline Configuration
4. Scenic Features
5. Scenic Quality of Water
Duration of View
Type of Water
Quality of Horizon
Indicators Present
Desktop Subtotal

	7
	4
X	6
X	9
X	9
35	

6. Landscape Character
Land Use
Roadside Characteristics
Settlement Characteristics
7. Vegetation
8. Composition & Effect
Field Evaluation

86

TOTAL SCORE

Viewshed Description

The Lane Island preserve, situated at the mouth of Carvers Harbor, is owned by the Nature Conservancy and opened to the public. The island is a diverse assemblage of habitats: rocky shorelines, sandy beaches, tide pools, cranberry bogs, freshwater marshes, mudflats, and extensive moors. Years of grazing and fires have kept the land open. A narrow footpath winds around the preserve, offering panoramic views of open ocean, Indian Creek, Carver's Harbor, The Reach, Robert's Island, Green Island, and many small island and ledges in Penobscot Bay. A handsome federal-style home dating to the early 1800's commands a high point on the island, just outside the preserve, and serves as a point of reference to hikers. A small family cemetery is located just above the sand beach on the eastern shoreline.

Viewshed Management Recommendations

Continued protection through conservation easements. Vegetation management to maintain open character of the moors.

Lane Island offers the casual visitor excellent opportunities to explore a variety of habitats.



Scenic Area Evaluation Form

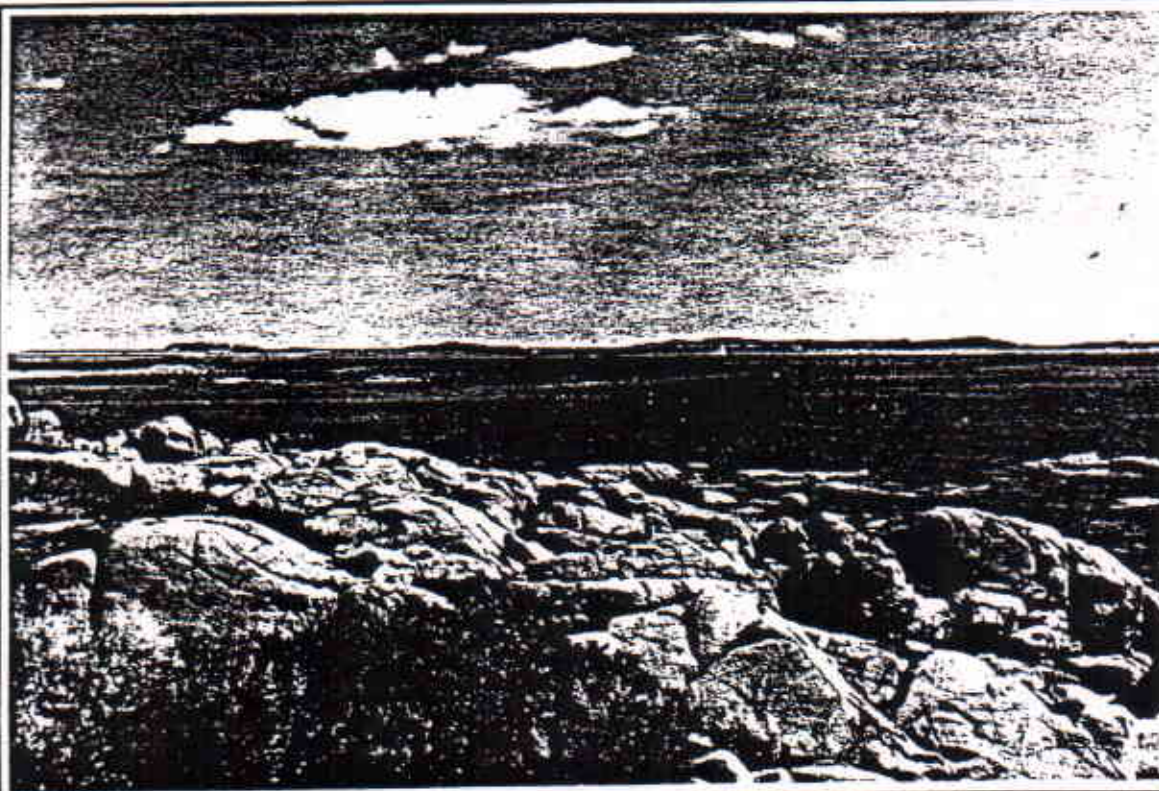
Scenic Area Lane Island
1990 Coastal Scenic Inventory

Code VI-02
Critical Areas Program

Town Vinalhaven
Maine State Planning Office



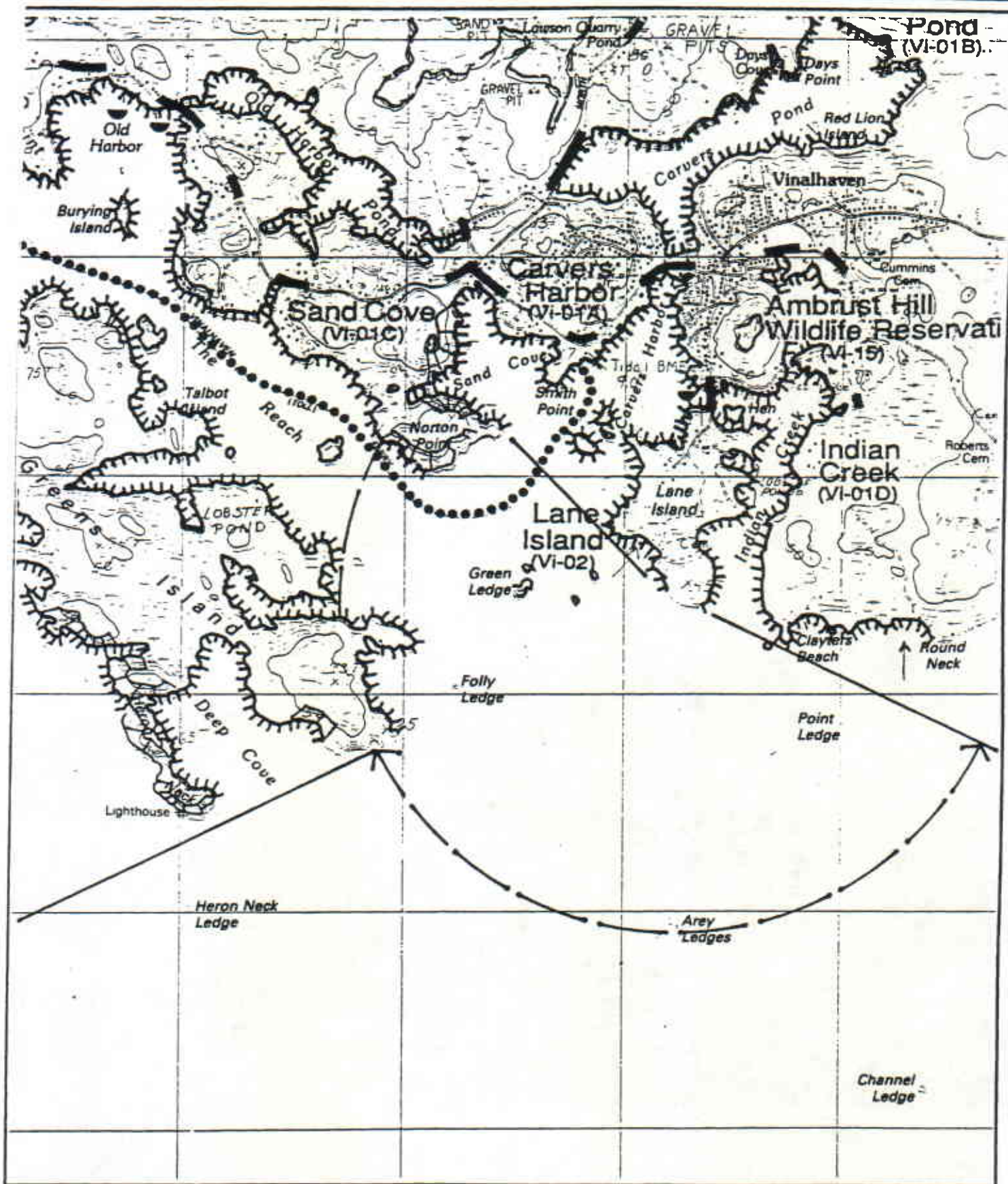
The entrance to Indian Creek. View looking south east from the sandy beach on the eastern side of the island.



The southern end of the island offers panoramic views of open ocean and offshore islands.

Scenic Area Location

Scenic Area Lane Island Code VI-02 Town Vinalhaven
Vinalhaven USGS Quadrangle: 7.5 minute series



Scenic Area Evaluation Form

Scenic Area **Old Harbor**
1990 Coastal Scenic Inventory

Code **VI-03**
Critical Areas Program

Town **Vinalhaven**
Maine State Planning Office

Scenic Evaluation

SI	SC	IP
	6	X
	9	X
	3	X
X	7	X
	9	X
		5
34		

SI: Special Interest
SC: Scoring
IP: Indicators Present

1. Landform
Elevation
Slope
 2. Open Land
 3. Shoreline Configuration
 4. Scenic Features
 5. Scenic Quality of Water
Duration of View
Type of Water
Quality of Horizon
- Indicators Present
Desktop Subtotal

	7
	5
	7
X	7
	8
34	

6. Landscape Character
Land Use
Roadside Characteristics
Settlement Characteristics
 7. Vegetation
 8. Composition & Effect
- Field Evaluation

68	
----	--

TOTAL SCORE

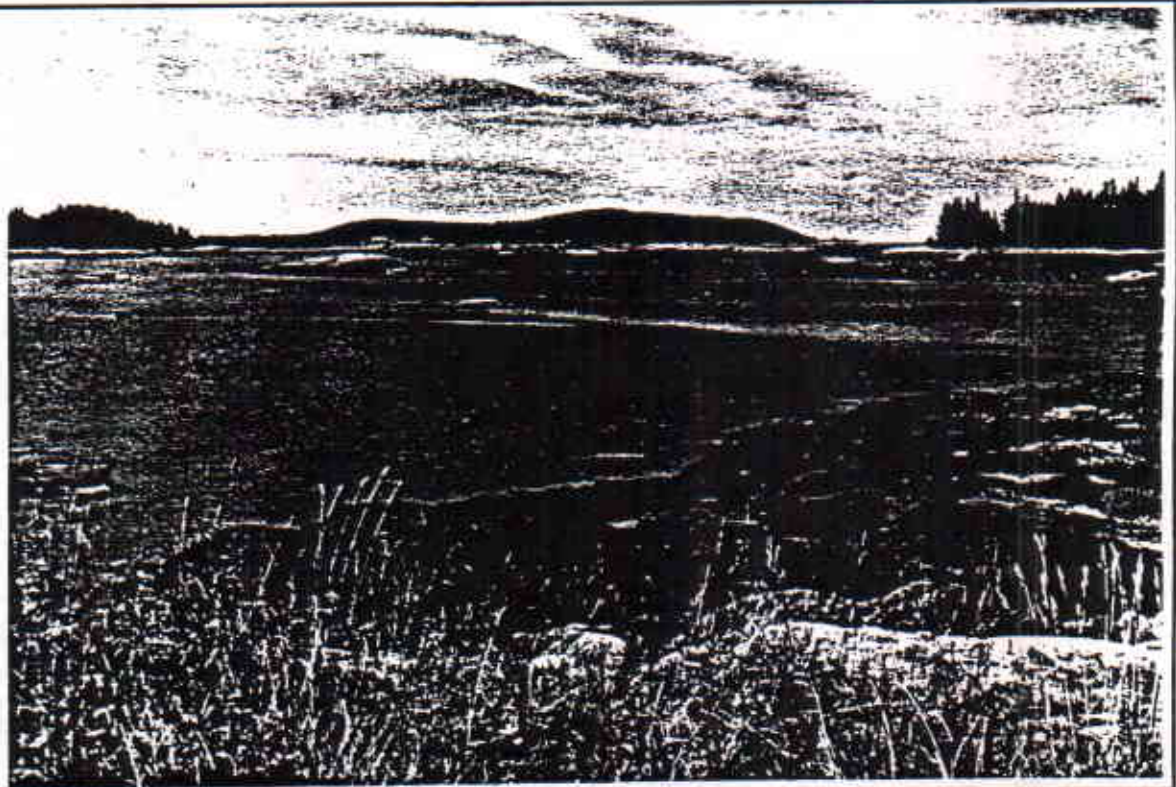
Viewshed Description

Old Harbor is one of a series of small coves that form the southern coastline of Vinalhaven Island. Public viewpoints are limited to a few places along the Barton Island Road, where the view extends out to The Reach, Hurricane Sound, Burying Island, and Hurricane Island. The views from the land contain few intrusions other than an occasional dock. The shoreline is rocky, with spruce and fir extending to the edge of the cove. On the east side of the road the view includes Old Harbor Pond, a small tranquil saltwater pond with a highly configured shoreline. An old granite dike divides the pond which is dotted with numerous outcrops. Steep evergreen ridges enclose the view.

Viewshed Management Recommendations

Vegetation management to preserve the views into the pond and the harbor. Conservation easement to protect viewshed of Old Harbor. Strict application of shoreland zoning ordinance.

View looking west toward Green Island, The Reach, and Hurricane Sound from Barton Island Road.



Scenic Area Evaluation Form

Scenic Area Old Harbor
1990 Coastal Scenic Inventory

Code VI-03
Critical Areas Program

Town Vinalhaven
Maine State Planning Office



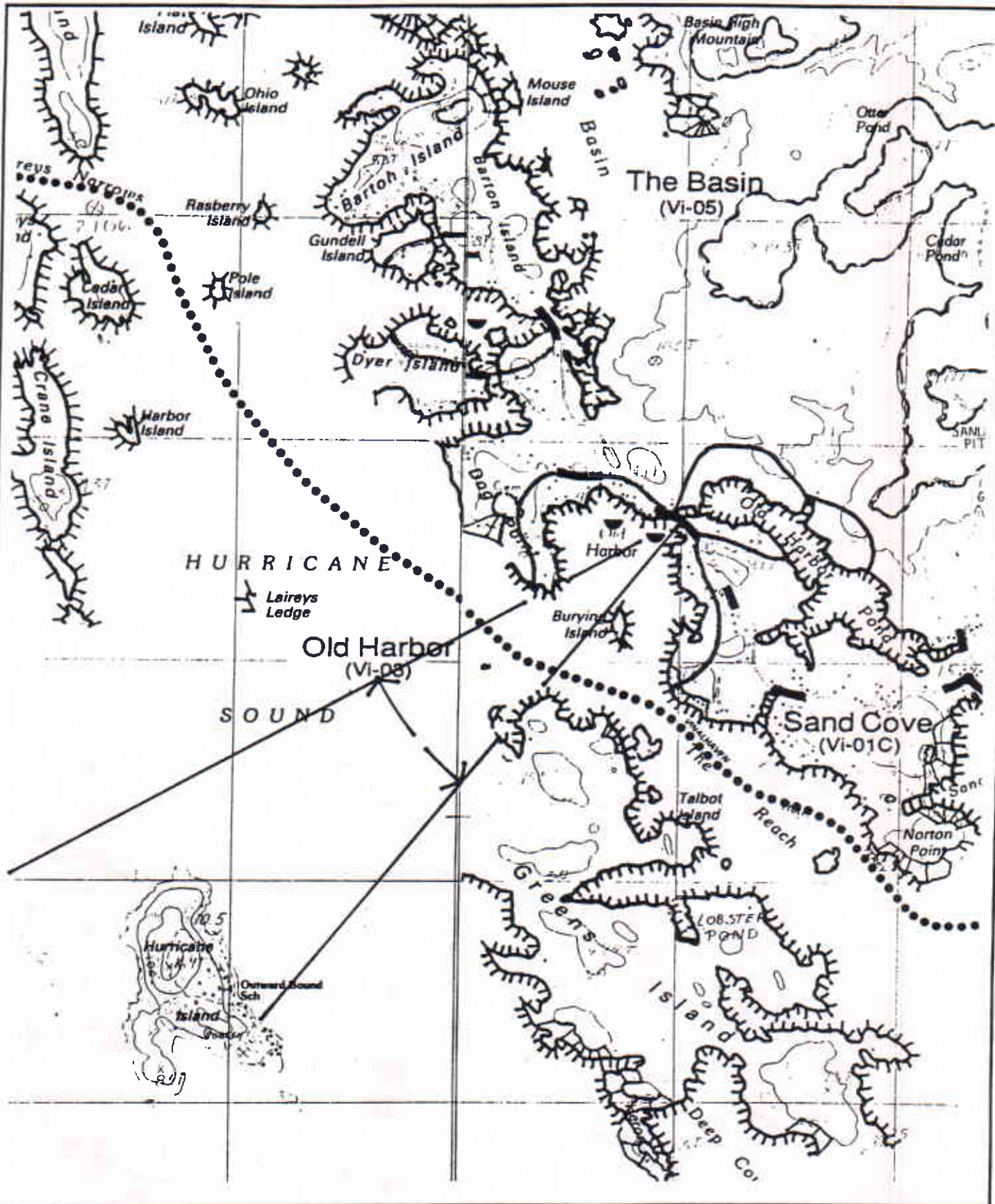
The shoreline of Old Harbor has little development visible from the Barton Island Road.



Old Harbor Pond, as seen from the Barton Island Road.

Scenic Area Location

Scenic Area Old Harbor Code VI-03 Town Vinalhaven
Vinalhaven/Leadbetter Island USGS Quadrangles: 7.5 minute series

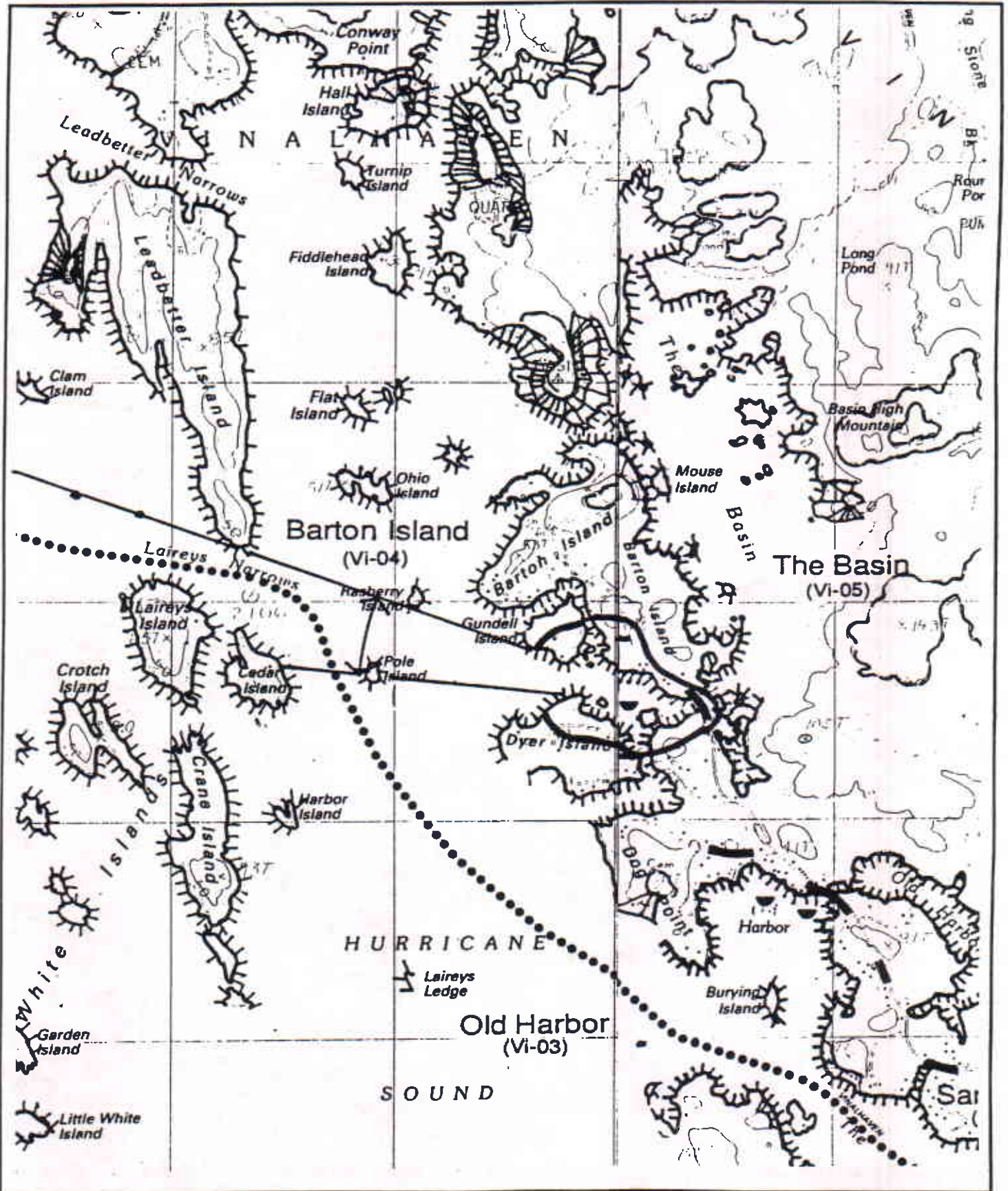


Scenic Area Location

Scenic Area Barton Island
Vinalhaven USGS Quadrangle: 7.5 minute series

Code VI-04

Town Vinalhaven



Scenic Area Evaluation Form

Scenic Area **The Basin**
1990 Coastal Scenic Inventory

Code **VI-05**
Critical Areas Program

Town **Vinalhaven**
Maine State Planning Office

Scenic Evaluation

SI: Special Interest
SC: Scoring
IP: Indicators Present

SI	SC	IP
	2	X
	4	X
	6	X
	9	X
	3	X
X	6	X
	6	X
		7
36		

1. Landform
Elevation
Slope
2. Open Land
3. Shoreline Configuration
4. Scenic Features
5. Scenic Quality of Water
Duration of View
Type of Water
Quality of Horizon
Indicators Present
Desktop Subtotal

X	8
	4
	8
X	8
	8
36	

6. Landscape Character
Land Use
Roadside Characteristics
Settlement Characteristics
7. Vegetation
8. Composition & Effect
Field Evaluation

72

TOTAL SCORE

Viewshed Description

The Basin is a large tidal lake at the northern end of the Barton Island Road. The road crossing, the only point of visual access, is marked by two lines of cut granite blocks. Boaters gain access by a twisting inlet at the north end. Despite its relatively large size and prominence, the Basin is virtually undeveloped, partially due to a number of conservation easements which have been placed on much of its viewshed. Basin High Mountain, a relatively low spruce-covered rise on the north, imparts a sense of enclosure to the Basin. The interior of the Basin is characterized by a number of small islands and a rocky shoreline, with evergreen cover extending to the waterline.

Viewshed Management Recommendations

Continue active acquisition of conservation easements to preserve the viewshed within the Basin. Vegetation management to preserve intermittent views of the Basin. Improve small parking area to reduce erosion and runoff.

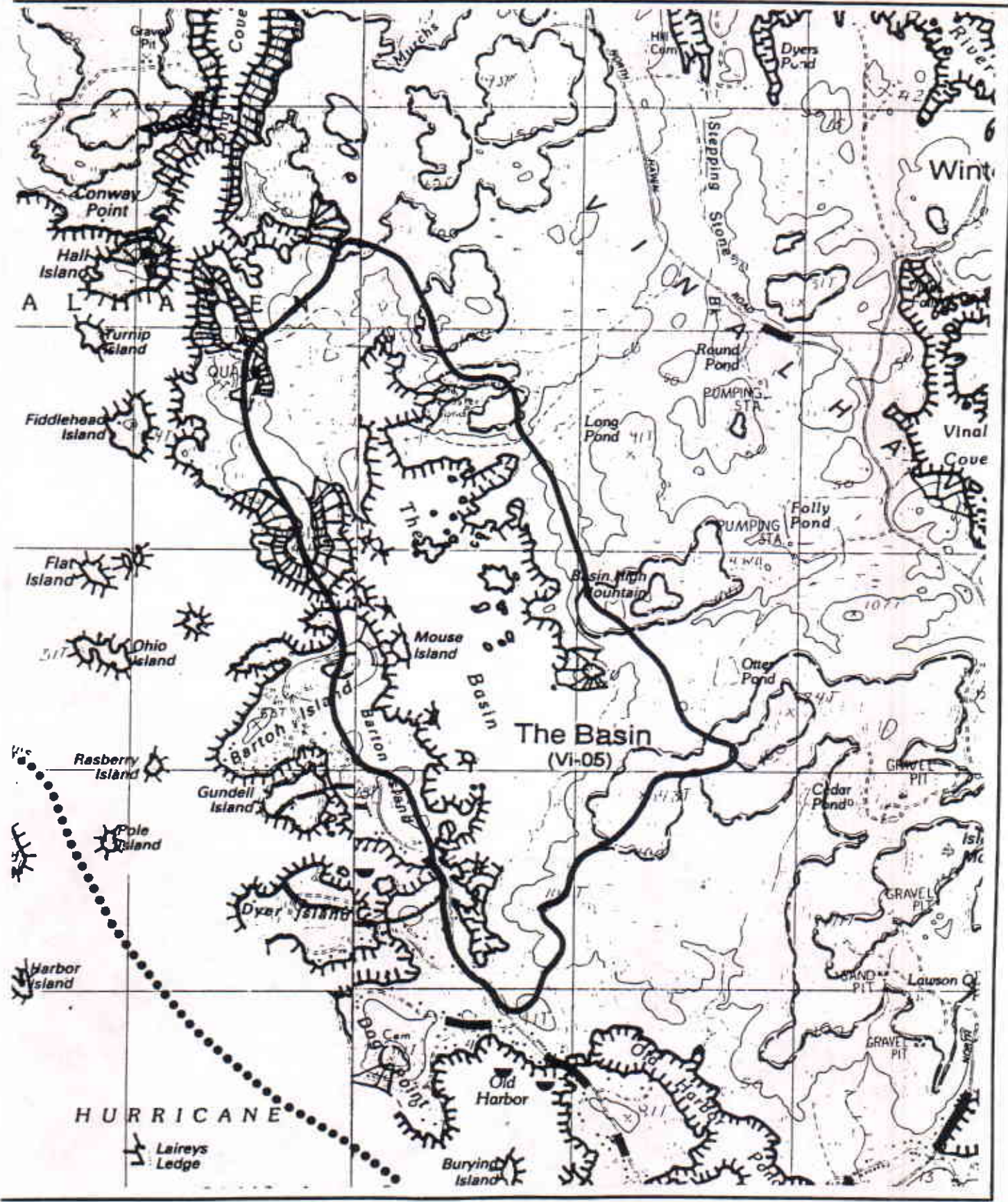
Looking north into the Basin from the Barton Island Road.



Scenic Area Location



Scenic Area The Basin Code VI-05 Town Vinalhaven
Vinalhaven USGS Quadrangle: 7.5 minute series



Scenic Area Evaluation Form

Scenic Area **Isle Au Haut Mountain** Code **VI-06** Town **Vinalhaven**
 1990 Coastal Scenic Inventory Critical Areas Program Maine State Planning Office

Scenic Evaluation

SI: Special Interest
 SC: Scoring
 IP: Indicators Present

SI	SC	IP
	6	X
	2	X
	3	X
	3	X
	9	X
	6	X
		6
29		

1. Landform
Elevation
Slope
2. Open Land
3. Shoreline Configuration
4. Scenic Features
5. Scenic Quality of Water
Duration of View
Type of Water
Quality of Horizon
Indicators Present
Desktop Subtotal

	4
	9
	7
20	
49	

6. Landscape Character
Land Use
Roadside Characteristics
Settlement Characteristics
 7. Vegetation
 8. Composition & Effect
Field Evaluation
- TOTAL SCORE**

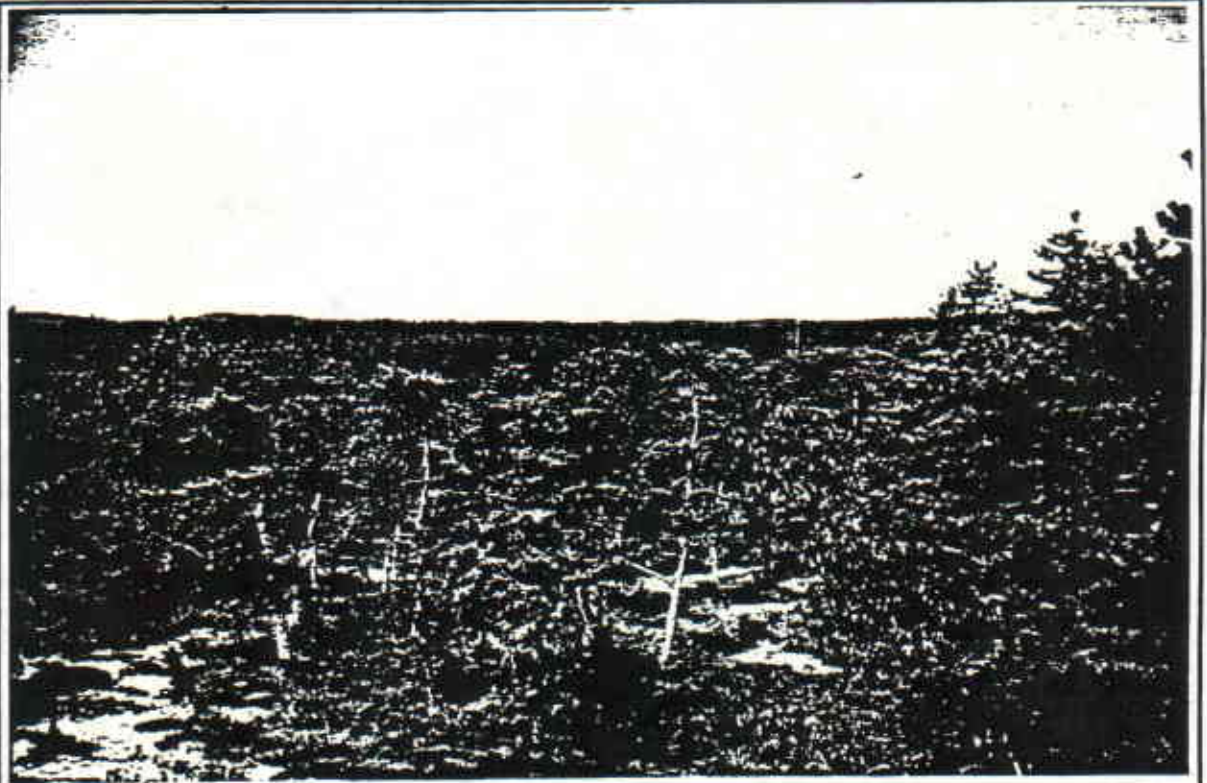
Viewshed Description

The summit of Isle Au Haut Mountain (elevation 187') offers a stunning, though somewhat limited, panorama of Hurricane Island and Hurricane Sound. Views of the water are restricted by the rolling topography and heavy tree cover. The top is reached by a gravel road that passes remnants of earlier operations: large pieces of scrap metal, massive granite blocks, wood boat skeletons, and general industrial debris. Isle Au Haut Mountain is of local significance due to limited viewing opportunities and difficult access.

Viewshed Management Recommendations

Improve trail markings. Clean up dump sites. Vegetation management to re-open views of Hurricane Mountain.

View looking west toward West Penobscot Bay from the summit of Isle Au Haut Mountain..



Scenic Area Location

Scenic Area Isle Au Haut Mountain Code VI-06 Town Vinalhaven
Vinalhaven USGS Quadrangle: 7.5 minute series



Scenic Area Evaluation Form

Scenic Area **Vinal Cove**
1990 Coastal Scenic Inventory

Code **VI-07**
Critical Areas Program

Town **Vinalhaven**
Maine State Planning Office

Scenic Evaluation

SI: Special Interest
SC: Scoring
IP: Indicators Present

SI	SC	IP
	4	X
X	6	X
	6	X
	6	X
X	6	X
	6	X
		6
34		

1. Landform
Elevation
Slope
 2. Open Land
 3. Shoreline Configuration
 4. Scenic Features
 5. Scenic Quality of Water
Duration of View
Type of Water
Quality of Horizon
- Indicators Present
Desktop Subtotal

	6
	3
X	5
X	6
	8
28	

6. Landscape Character
Land Use
Roadside Characteristics
Settlement Characteristics
7. Vegetation
8. Composition & Effect
Field Evaluation

62

TOTAL SCORE

Viewshed Description

Vinal Cove is a small extension of Winter Harbor on the north shore of Vinalhaven. The main point of public visual access is along a short segment of the Round Island Road. The highly configured shoreline is enhanced by small spruce covered islands in the water and large square-cut blocks on the shoreline. Large granite blocks line both sides of the road. The neighborhood context is open and pastoral, with fields extend out from a single farmhouse. A second view opens up near Vinal Falls at the north end of the cove. The shoreline is highly configured, with a single white farmhouse complementing the scene on the east side of Winter Harbor. The low hills surrounding the cove are characteristic of much of the island, with spruce and fir extending to the waters edge.

Viewshed Management Recommendations

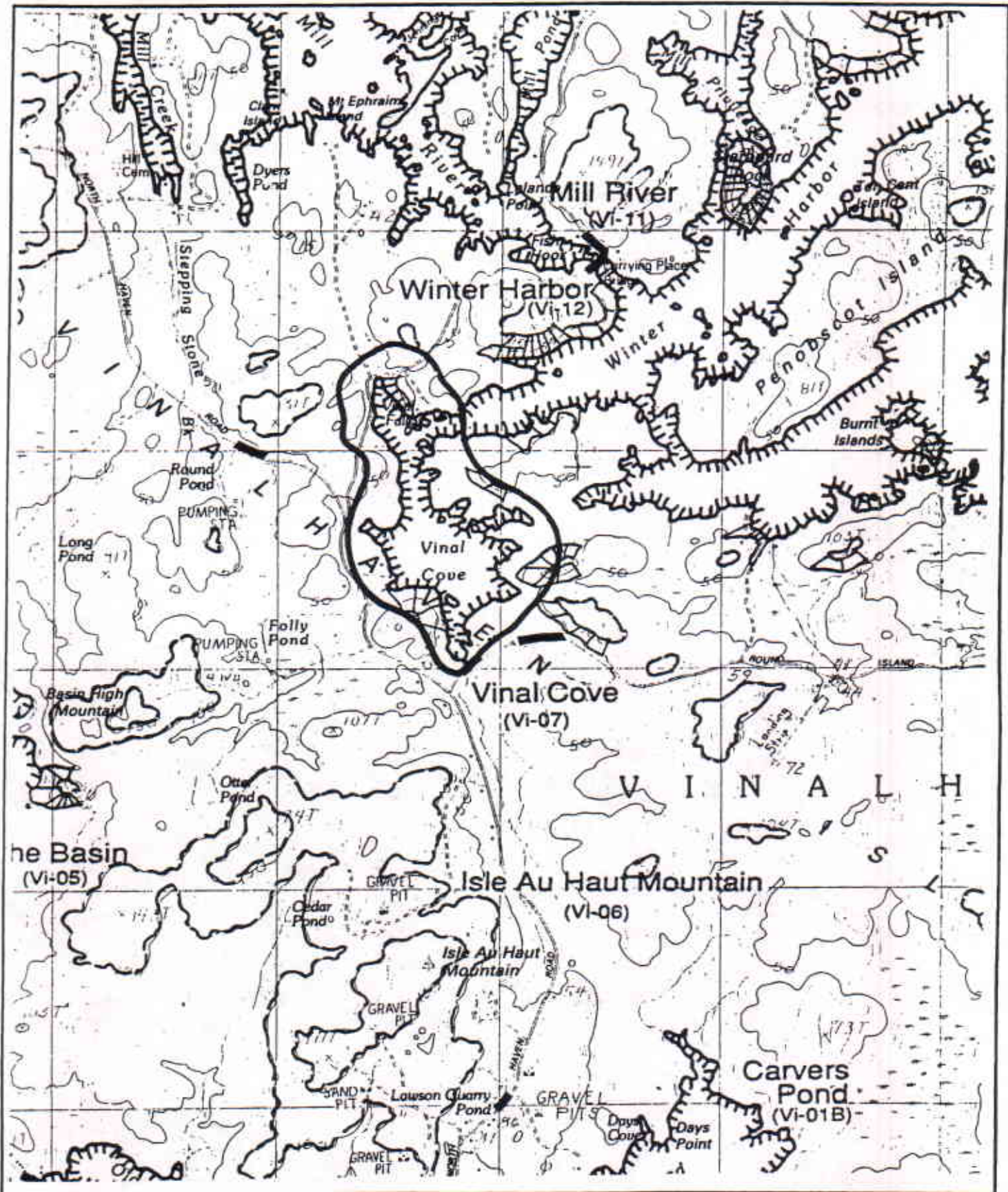
Conservation easements to preserve the viewshed within Vinal Cove and Winter Harbor. Vegetation management to preserve intermittent views of the Cove.

View north from Round Island Road into Vinal Cove toward Vinal Falls.



Scenic Area Location

Scenic Area Vinal Cove Code VI-07 Town Vinalhaven
Vinalhaven USGS Quadrangle: 7.5 minute series



Scenic Area Evaluation Form

Scenic Area **Crockett Cove**
1990 Coastal Scenic Inventory

Code **VI-08**
Critical Areas Program

Town **Vinalhaven**
Maine State Planning Office

Scenic Evaluation

SI: Special Interest
SC: Scoring
IP: Indicators Present

SI	SC	IP
	6	X
	3	
	4	
X	6	X
	6	X
X	3	X
X	9	X
	9	X
		5
46		

1. Landform
Elevation
Slope
2. Open Land
3. Shoreline Configuration
4. Scenic Features
5. Scenic Quality of Water
Duration of View
Type of Water
Quality of Horizon
Indicators Present
Desktop Subtotal

	8
	1
	8
X	9
	8
34	

6. Landscape Character
Land Use
Roadside Characteristics
Settlement Characteristics
7. Vegetation
8. Composition & Effect
Field Evaluation

80

TOTAL SCORE

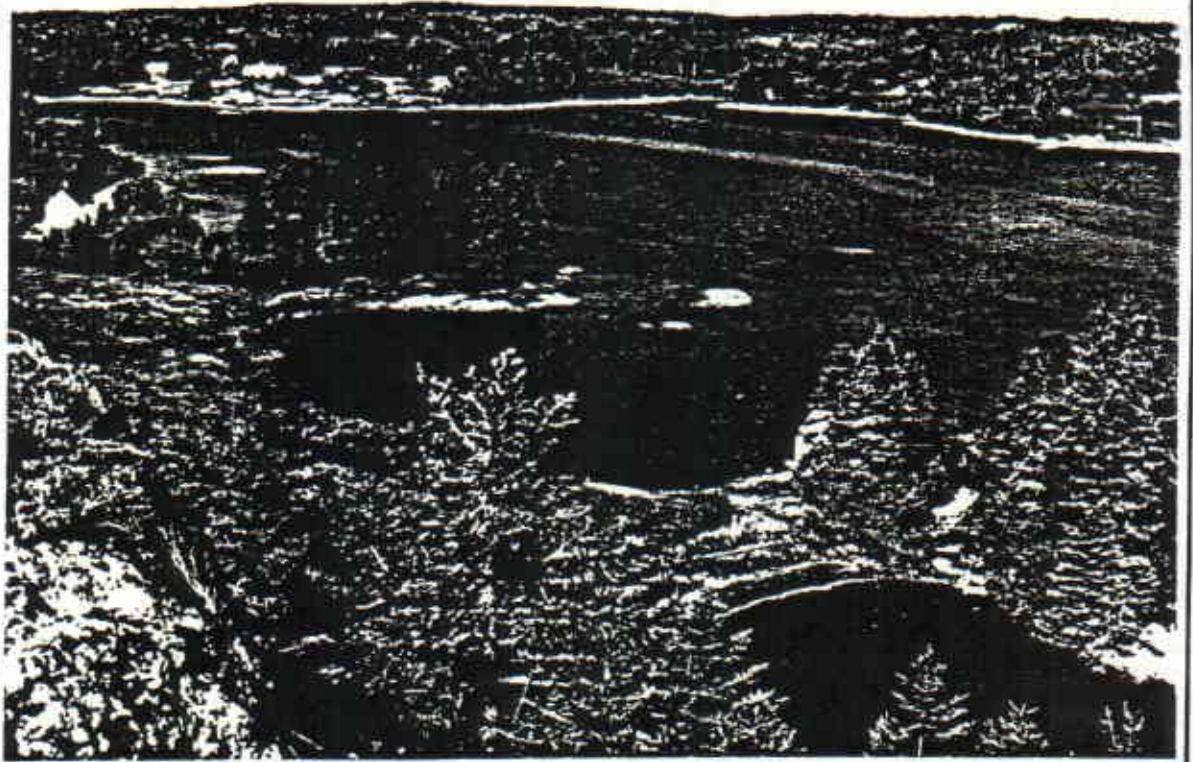
Viewshed Description

Crockett Cove is a deep indentation along the north-western corner of the island. Much of the land surrounding the cove is settled, with a number of open fields extending down to the water from farmhouses and cottages. One of the few overlooks on the island is found atop Tip Toe Mountain, a 100 foot peak rising abruptly from the western shoreline. The summit offers a dramatic panorama of the cove out to Dogfish Island. The town has established a small park at Tip Toe Mountain with picnic tables, parking spaces, and several trails. Intermittent views of the cove are found along the Crockett River Road.

Viewshed Management Recommendations

Interpretive signage. Vegetation management to maintain open summit.

The summit of Tip Toe Mountain offers on of the most striking panoramas on the island.

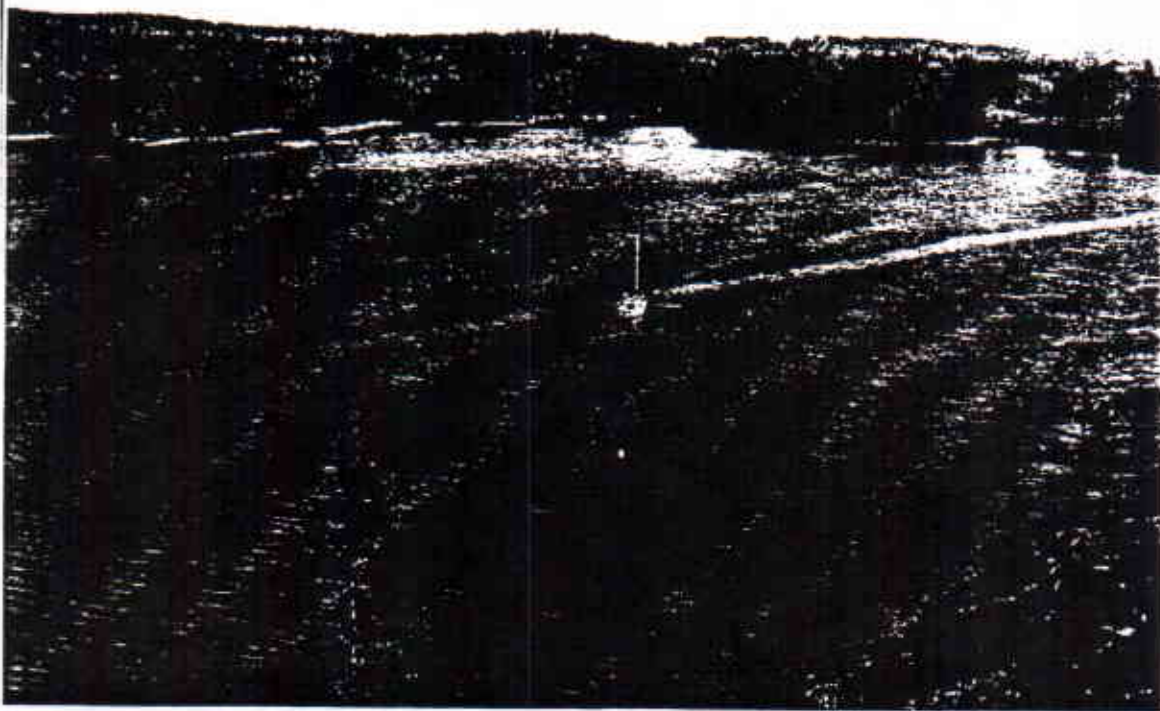


Scenic Area Evaluation Form

Scenic Area **Crockett Cove**
1990 Coastal Scenic Inventory

Code **VI-08**
Critical Areas Program

Town **Vinalhaven**
Maine State Planning Office



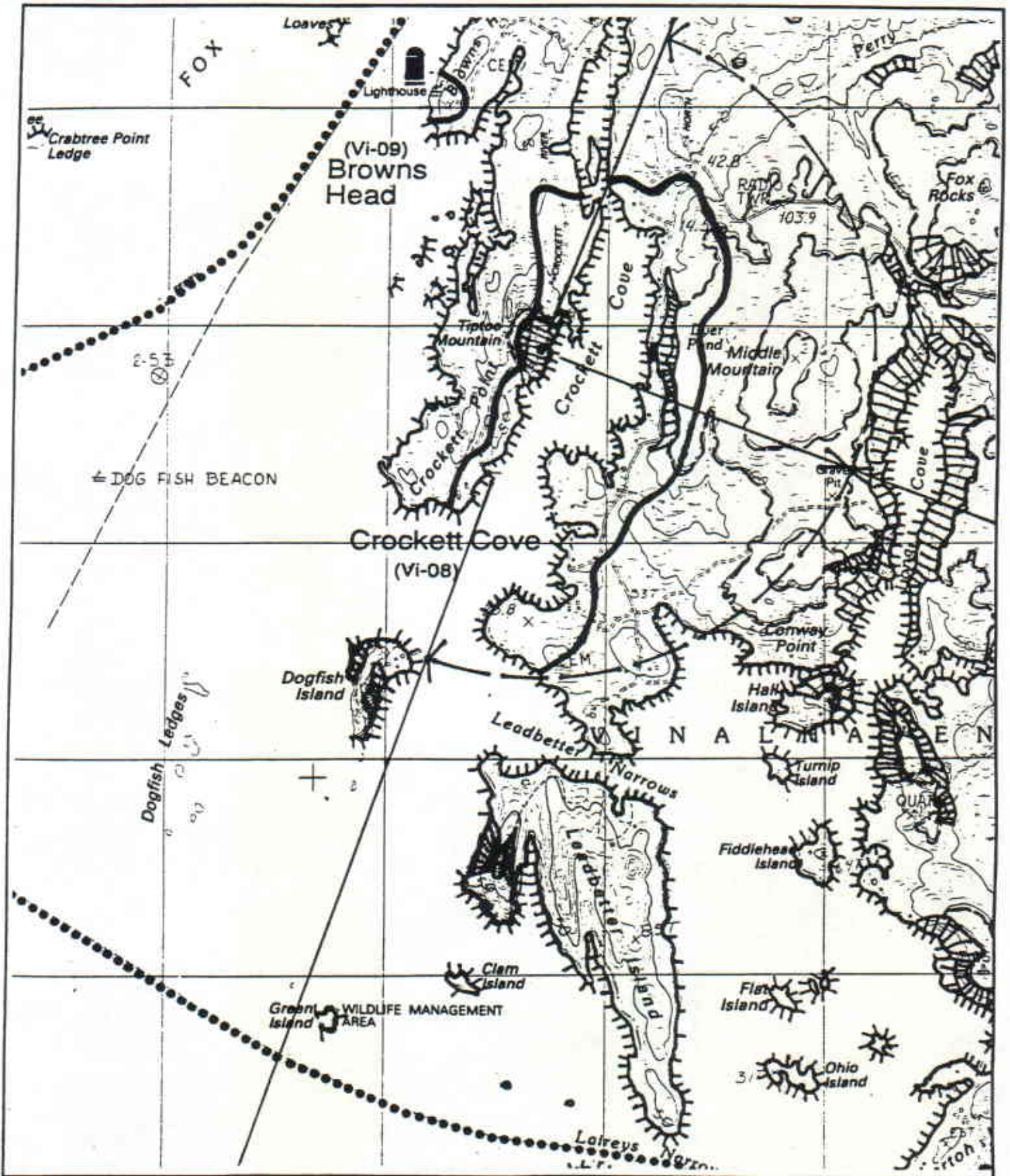
The view from the summit of Tip Toe Mountain, looking east across Crockett Cove.



View looking southeast over the cliffs of Tip-Toe Mountain and Crockett Cove toward Penobscot Bay.

Scenic Area Location

Scenic Area **Crockett Cove** Code **VI-08** Town **Vinalhaven**
Leadbetter Island USGS Quadrangle: 7.5 minute series



Scenic Area Evaluation Form

Scenic Area **Browns Head**
1990 Coastal Scenic Inventory

Code **VI-09**
Critical Areas Program

Town **Vinalhaven**
Maine State Planning Office

Scenic Evaluation

SI: Special Interest
SC: Scoring
IP: Indicators Present

SI	SC	IP
	3	
	2	
X	9	X
	3	X
	12	X
	6	X
		4
Indicators Present		
Desktop Subtotal		35

1. Landform
Elevation
Slope
2. Open Land
3. Shoreline Configuration
4. Scenic Features
5. Scenic Quality of Water
Duration of View
Type of Water
Quality of Horizon

	5
	3
	6
	6
	6
Field Evaluation	
26	

6. Landscape Character
Land Use
Roadside Characteristics
Settlement Characteristics
7. Vegetation
8. Composition & Effect

TOTAL SCORE	
61	

Viewshed Description

The light at Brown's Head signifies the entrance to the Fox Island Thorofare, the highly scenic passage between Vinalhaven and North Haven Islands. The view at Brown's Head includes the lighthouse, the Thorofare, the southern tip of North Haven Island, West Penobscot Bay, and the Camden Hills. A bell marker clangs with the wind and waves, marking the entrance to the Thorofare and the edge of a narrow channel running between the Sugar Loaves and Vinalhaven. Public access is limited to a parking lot above the lighthouse. A highly vivid landscape, especially in the summer months when the waters are filled with sailing and racing boats of all descriptions. The lighthouse was built over 150 years ago, commissioned while Andrew Jackson was president.

Viewshed Management Recommendations

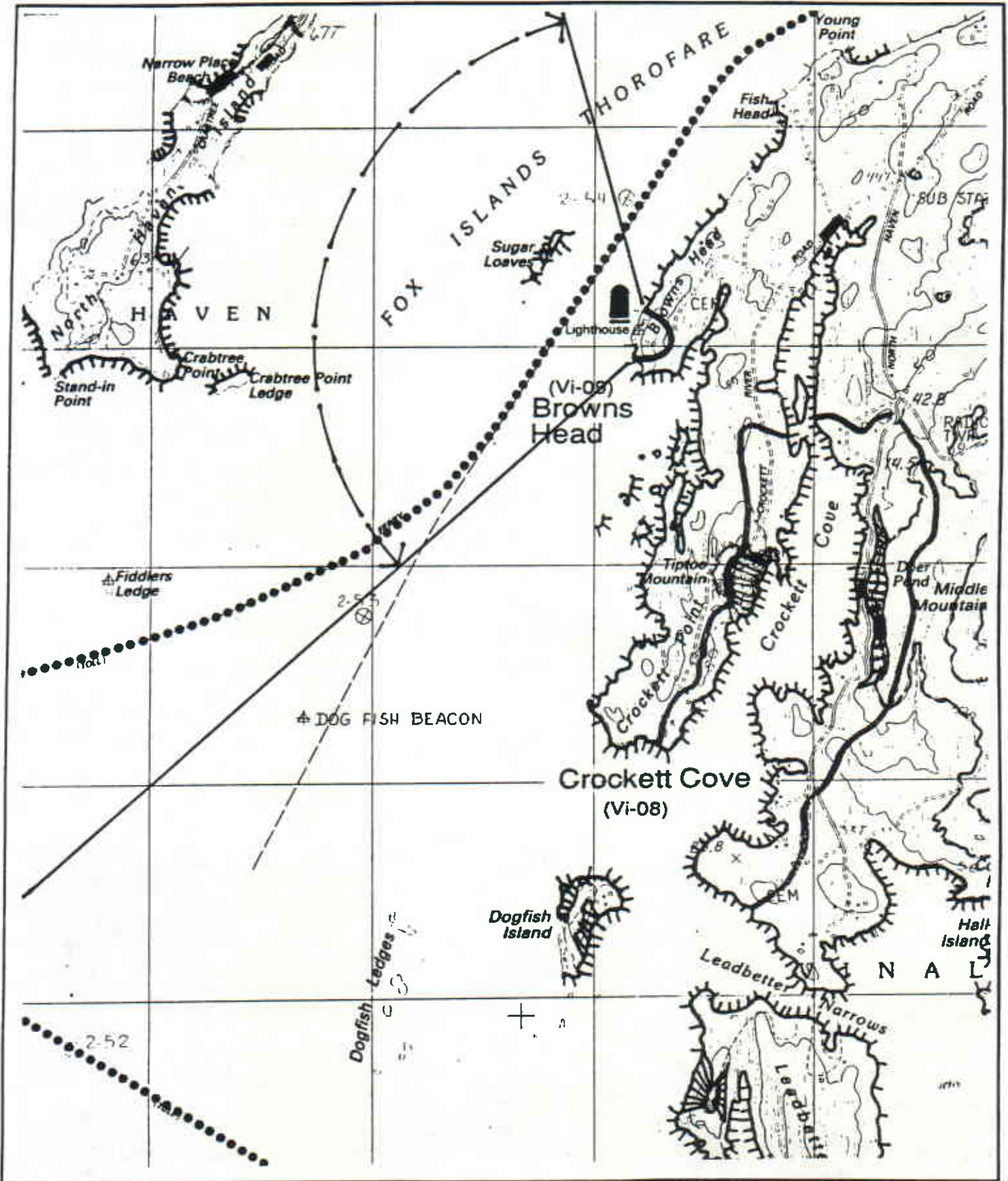
Screening of maintenance buildings. Better definition of parking lot/turnaround at the end of the road.

View north overlooking Browns Head Light, the Fox Island Thorofare, and the southernmost tip of North Haven. On a clear day the view extends to the Camden Hills.



Scenic Area Location

Scenic Area Browns Head Code VI-09 Town Vinalhaven
Leadbetter Island USGS Quadrangle: 7.5 minute series



Scenic Area Evaluation Form

Scenic Area **Fox Island Thorofare**
1990 Coastal Scenic Inventory

Code **VI-10**
Critical Areas Program

Town **Vinalhaven**
Maine State Planning Office

Scenic Evaluation

SI: Special Interest
SC: Scoring
IP: Indicators Present

SI	SC	IP
	3	
	2	
	3	X
X	9	XX
	6	X
	9	X
	6	X
		6
Indicators Present		
Desktop Subtotal		38

1. Landform
Elevation
Slope
2. Open Land
3. Shoreline Configuration
4. Scenic Features
5. Scenic Quality of Water
Duration of View
Type of Water
Quality of Horizon

X	7
	1
X	9
X	6
	9
Field Evaluation	
32	

6. Landscape Character
Land Use
Roadside Characteristics
Settlement Characteristics
7. Vegetation
8. Composition & Effect

TOTAL SCORE

70

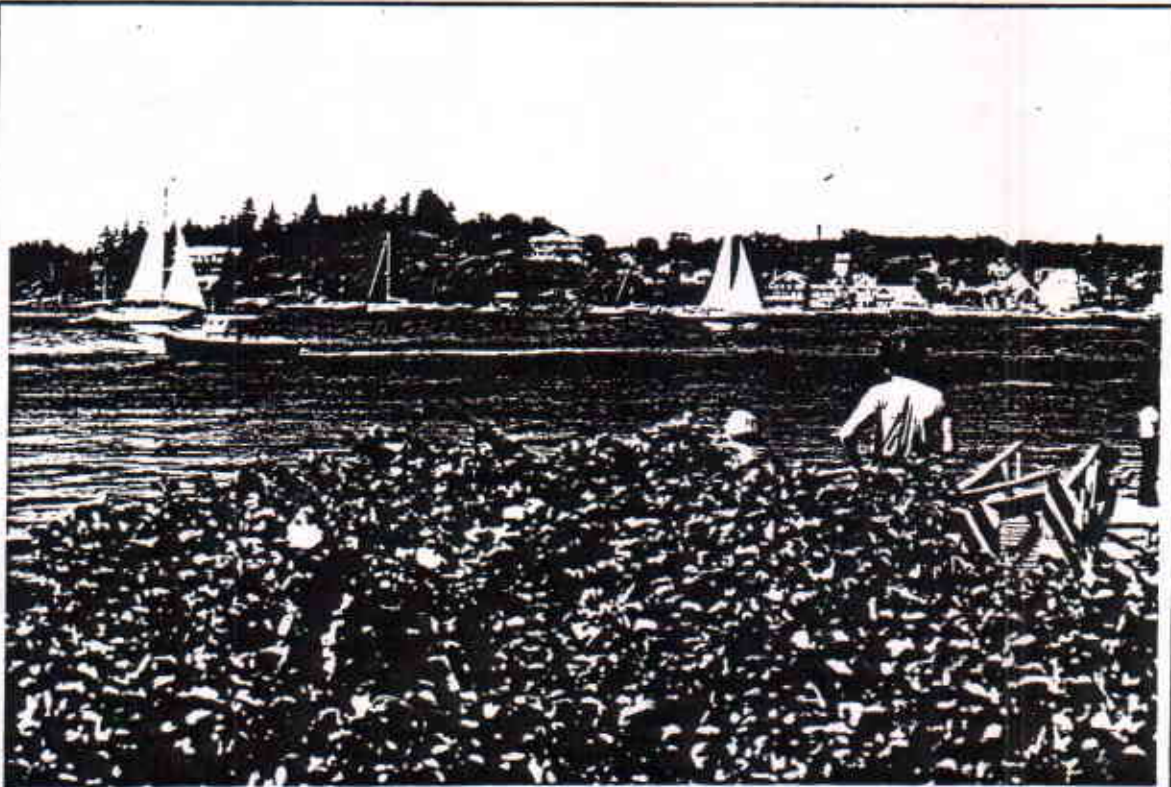
Viewshed Description

The Fox Island Thorofare is a place of legendary significance to the sailors of Maine. The passage-way varies in width from 100 to over 500 yards, and extends for 7 or 8 miles between the islands of Vinalhaven and North Haven. During the summer months, the Thorofare witnesses a continuous parade of pleasure boats and fishing vessels of all sizes. Despite its relative length, the only point of public access in Vinalhaven is from the Town Landing, opposite the picturesque village of North Haven. Rosa rugosa line the shore. The views to the west are limited by the undulating shoreline, while the view to the east extends down the shoreline toward Calderwood Point. The Vinalhaven shoreline is lined by stately cottages set into the hillside; however, they are only visible from the water or from the North Haven side of the Thorofare.

Viewshed Management Recommendations

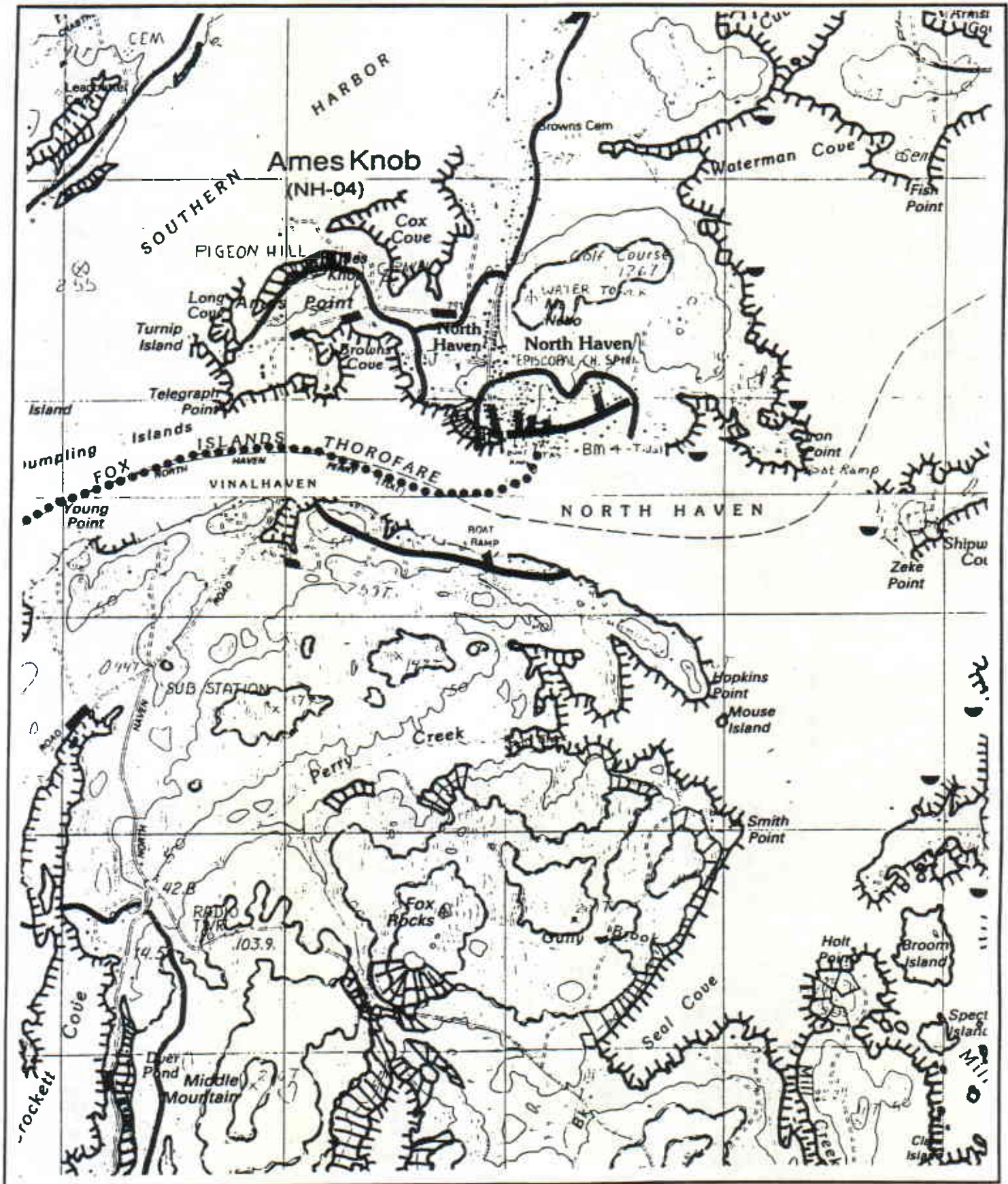
Vegetation management to preserve open character of the waterfront surrounding the town landing. Strict application of shoreland zoning ordinance. Conservation easements to limit development that could protrude above the horizon on both sides of the Thorofare.

The Fox Island Thorofare and North Haven Village as seen from the Vinalhaven town landing.



Scenic Area Location

Scenic Area Fox Island Thorofare Code VI-10 Town Vinalhaven
Vinalhaven/Leadbetter Island USGS Quadrangle: 7.5 minute series



Scenic Area Evaluation Form

Scenic Area **Mill River**
1990 Coastal Scenic Inventory

Code **VI-11**
Critical Areas Program

Town **Vinalhaven**
Maine State Planning Office

Scenic Evaluation

SI: Special Interest
SC: Scoring
IP: Indicators Present

SI	SC	IP
	6	X
	6	X
	3	X
	6	X
	3	X
		5
Indicators Present		
Desktop Subtotal		24

1. Landform
Elevation
Slope
2. Open Land
3. Shoreline Configuration
4. Scenic Features
5. Scenic Quality of Water
Duration of View
Type of Water
Quality of Horizon

	5
	3
	6
	5
	6
	26

6. Landscape Character
Land Use
Roadside Characteristics
Settlement Characteristics
7. Vegetation
8. Composition & Effect
Field Evaluation

50

TOTAL SCORE

Viewshed Description

Mill River is one of the many coves on Vinalhaven that extend long fingers inland, with limited public visibility. The Carrying Place Bridge on the Calderwood Neck Road is the only point where the cove is visible from a road. The view extends for nearly 1/2 mile to the northwest along a highly configured, rocky shoreline. Evergreens extend to the shoreline throughout most of the view. There is some evidence of residential development on the northern shoreline where the trees have been limbed up, exposing a manicured lawn.

Viewshed Management Recommendations

Strict application of shoreland zoning ordinance. Conservation easements to protect the viewshed of Mill River, especially the ridgeline.

View of the Mill River looking northwest toward Fish Hook from the Carrying Place Bridge.



Scenic Area Location

Scenic Area Mill River Code VI-11 Town Vinalhaven
Vinalhaven USGS Quadrangle: 7.5 minute series



Scenic Area Evaluation Form

Scenic Area **Winter Harbor**
1990 Coastal Scenic Inventory

Code **VI-12**
Critical Areas Program

Town **Vinalhaven**
Maine State Planning Office

Scenic Evaluation

SI: Special Interest
SC: Scoring
IP: Indicators Present

SI	SC	IP
	6	X
	6	X
	3	X
	6	X
	3	X
		5
Indicators Present		
Desktop Subtotal		24

- Landform
Elevation
Slope
- Open Land
- Shoreline Configuration
- Scenic Features
- Scenic Quality of Water
Duration of View
Type of Water
Quality of Horizon

	3
	2
	3
	7
	6
	21
Field Evaluation	
TOTAL SCORE	
45	

- Landscape Character
Land Use
Roadside Characteristics
Settlement Characteristics
- Vegetation
- Composition & Effect

TOTAL SCORE

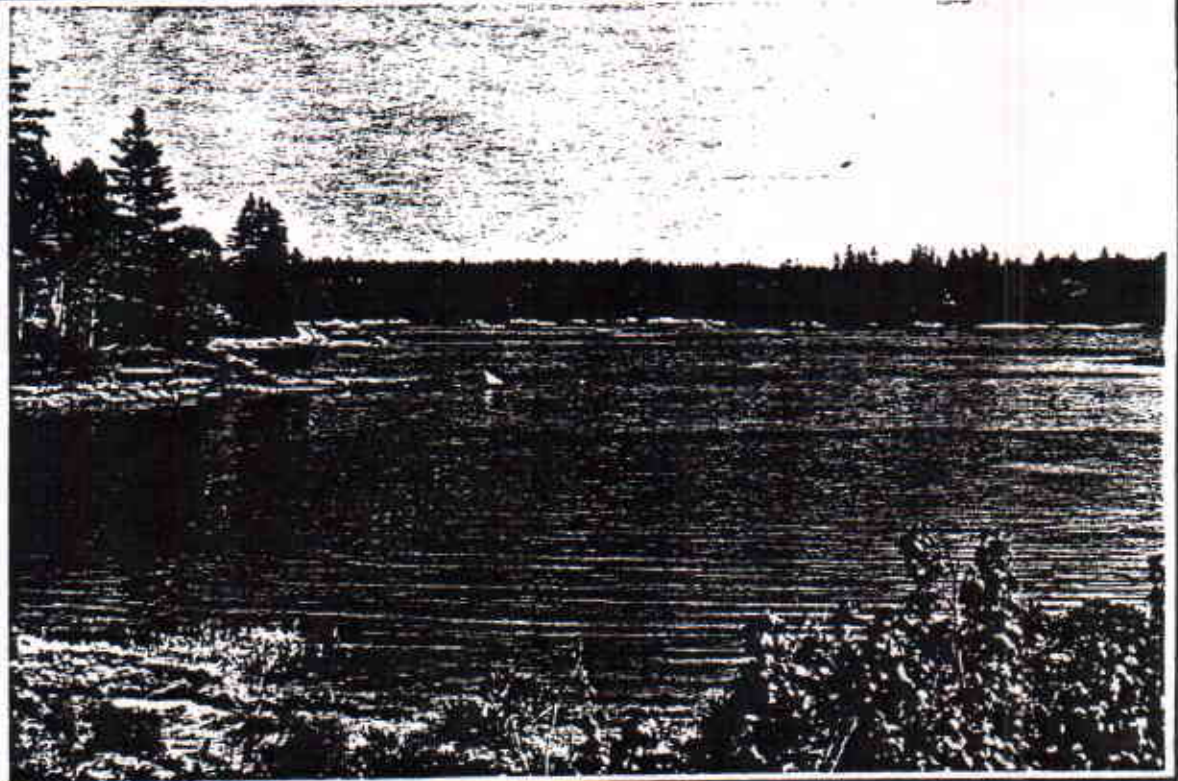
Viewshed Description

View to the southeast from Carrying Place Bridge. The view from the gravel road leading to Calderwood Neck is lined with dense understory vegetation which limits most views from the road. With the exception of the two private homes little development is visible along the highly configured shoreline. The harbor is dotted with rocks exposed throughout the tidal changes. The view is totally enclosed by the strong evergreen edge. The view extends across to harbor to undeveloped Penobscot Island. While the harbor offers a sheltered anchorage for cruising boats, they are generally not visible due to the undulations in the shoreline.

Viewshed Management Recommendations

Strict application of shoreland zoning ordinance. Conservation easements to protect the viewshed of Winter Harbor.

View looking southeast toward Penobscot Island on Winter Harbor from the Carrying Place Bridge.



Scenic Area Location

Scenic Area Winter Harbor
Vinalhaven USGS Quadrangle: 7.5 minute series

Code VI-12

Town Vinalhaven



Scenic Area Evaluation Form

Scenic Area **Geary's Beach**
1990 Coastal Scenic Inventory

Code **VI-13**
Critical Areas Program

Town **Vinalhaven**
Maine State Planning Office

Scenic Evaluation

SI: Special Interest
SC: Scoring
IP: Indicators Present

SI	SC	IP
	3	X
	6	X
	9	X
X	9	X
	12	X
	9	X
		6
		48

- Landform
Elevation
Slope
 - Open Land
 - Shoreline Configuration
 - Scenic Features
 - Scenic Quality of Water
Duration of View
Type of Water
Quality of Horizon
Indicators Present
- Desktop Subtotal

	3
	1
	6
	7
	7
	24

- Landscape Character
Land Use
Roadside Characteristics
Settlement Characteristics
 - Vegetation
 - Composition & Effect
- Field Evaluation

72

TOTAL SCORE

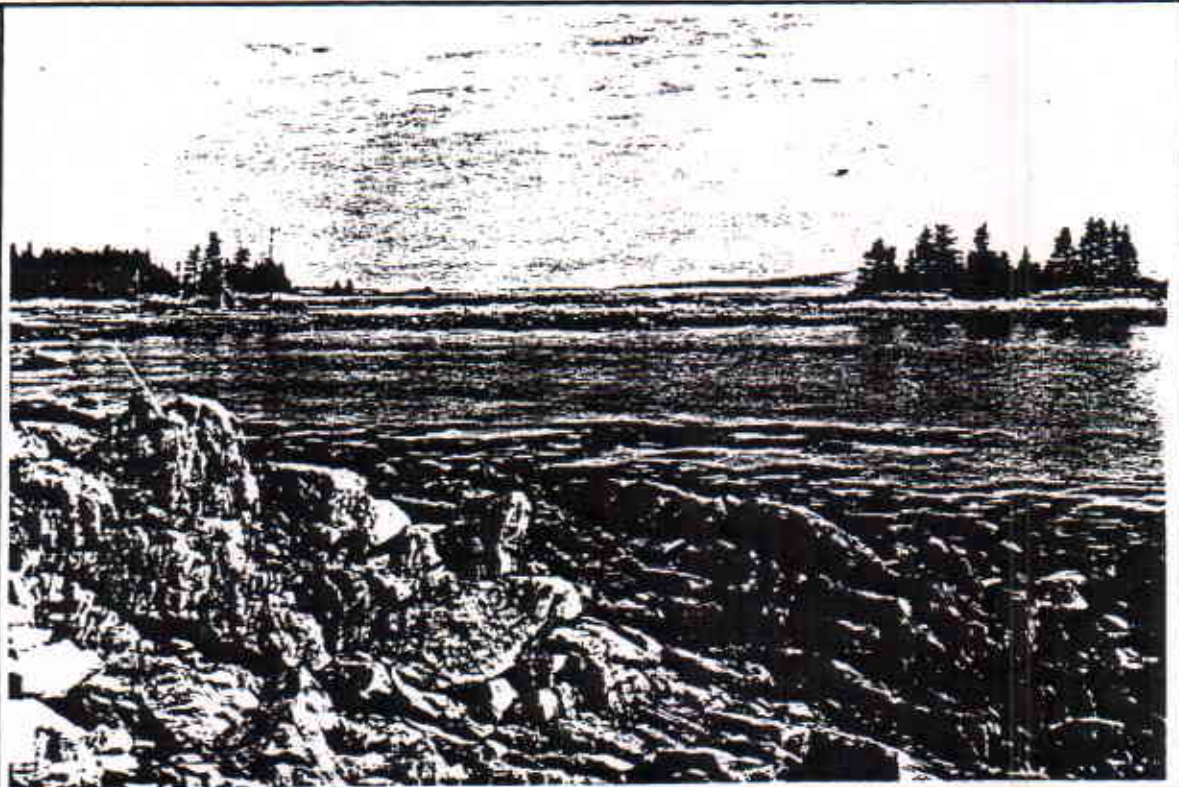
Viewshed Description

Geary's Beach and Arey Neck Woods are town-owned recreation areas on the island's eastern shoreline. Facilities include footpaths, picnic tables, and two beach areas. The shoreline affords panoramic views of Isle Au Haut, Brimstone Island, Matinicus Island, the distant mountains of Mount Desert Island, and the boating traffic in East Penobscot Bay. The foreground offers a high level of visual diversity: sheltered coves, a rocky neck, remnants of tidal mills, sand beaches, freshwater wetland, fields, and evergreen forests. The spit which extends out to Bob Meadow Point forms a high degree of enclosure with Arey Neck and Greer Island.

Viewshed Management Recommendations

Continued high level of maintenance. Conservation easements to protect viewshed of recreation area. Interpretive signage to further educational and recreational value of the property.

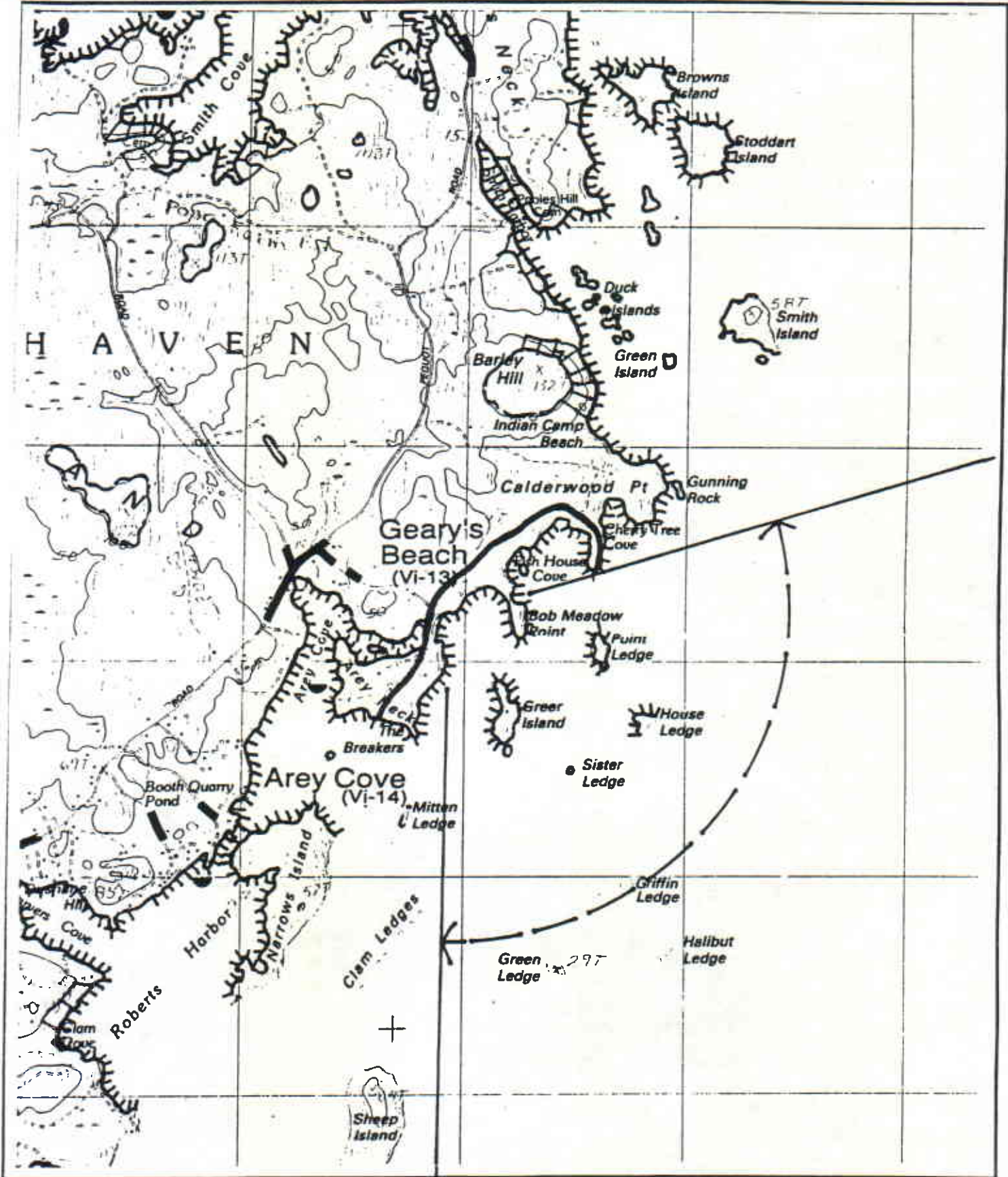
View looking east from Geary's Beach toward Bob Meadow Point.



Scenic Area Location

Scenic Area **Geary's Beach** Code VI-13
Vinalhaven USGS Quadrange: 7.5 minute series

Town Vinalhaven



Scenic Area Evaluation Form

Scenic Area **Arey Cove**
 1990 Coastal Scenic Inventory

Code **VI-14**
 Critical Areas Program

Town **Vinalhaven**
 Maine State Planning Office

Scenic Evaluation

SI: Special Interest
 SC: Scoring
 IP: Indicators Present

SI	SC	IP
	1	
	6	X
	6	X
	9	X
	12	X
	6	X
		5
Indicators Present		
Desktop Subtotal		40

1. Landform
 Elevation
 Slope
 2. Open Land
 3. Shoreline Configuration
 4. Scenic Features
 5. Scenic Quality of Water
 Duration of View
 Type of Water
 Quality of Horizon
- Indicators Present
 Desktop Subtotal

	3
	3
	4
	6
	16

6. Landscape Character
 Land Use
 Roadside Characteristics
 Settlement Characteristics
 7. Vegetation
 8. Composition & Effect
- Field Evaluation

56

TOTAL SCORE

Viewshed Description

The sparsely settled Arey Cove area extends from Arey Neck to Narrows Island. The primary public viewpoint is from Narrows Park at the end of the Booth Quarry Road. The park is currently under construction by dedicated volunteers who are transforming a former dump into a town recreation area. Although the views from the park are somewhat limited by the proximity and size of Narrows Island, it does offer a good diversity of landforms and a highly configured dramatic shoreline. Arey Cove, Arey Neck, the Breakers, Greer Island, Isle Au Haut Bay, and Isle Au Haut are all visible from the park.

Viewshed Management Recommendations

Continued development of Narrows Park. Removal and/or burial of debris from the former dump. Reestablishment of vegetation on the slopes facing Arey Cove.



View looking northeast into Arey Cove toward Arey Neck from Narrows Park.

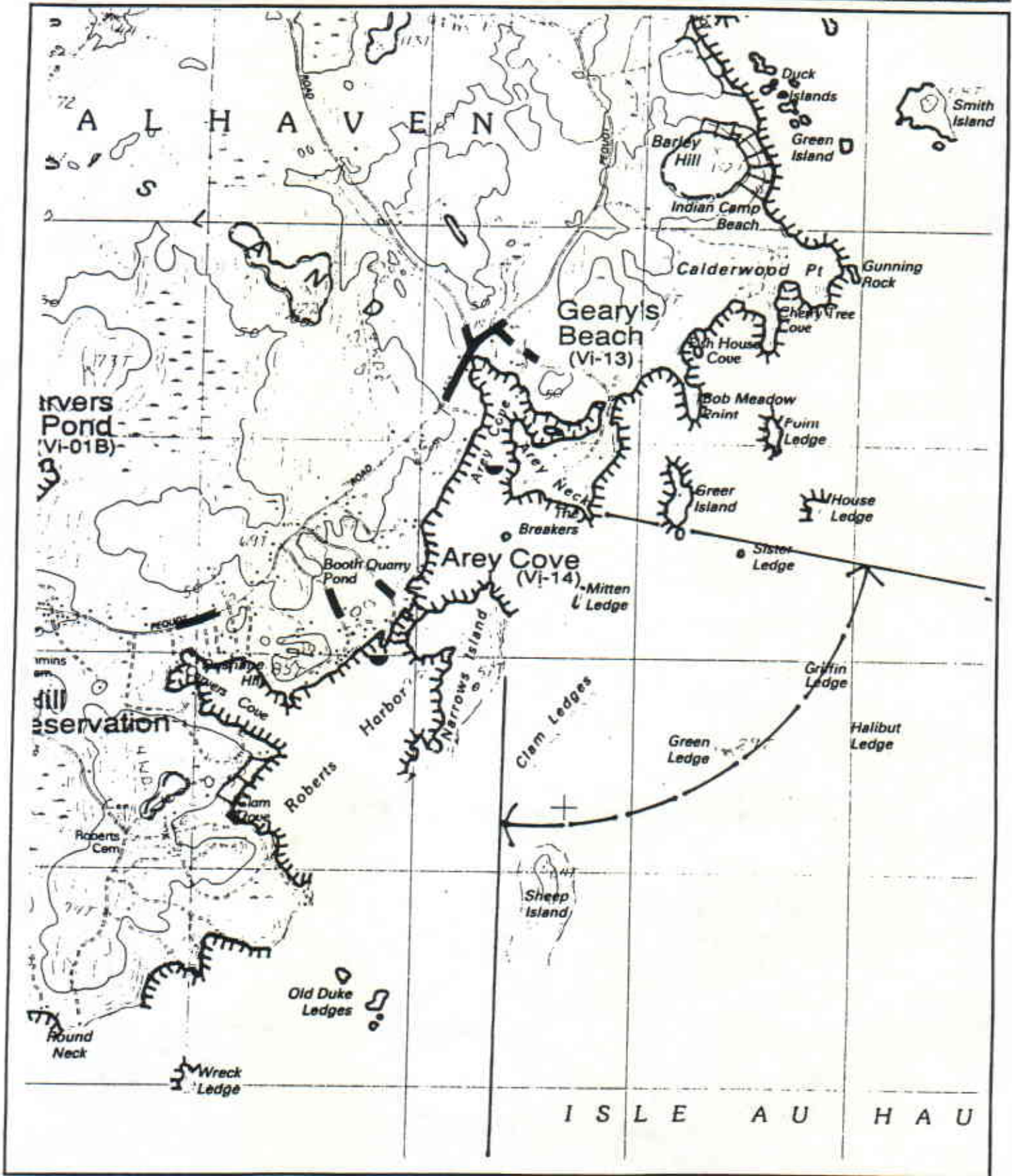
Scenic Area Location

Scenic Area Arey Cove

Code VI-14

Town Vinalhaven

Vinalhaven USGS Quadrangle: 7.5 minute series



Scenic Area Evaluation Form

Scenic Area **Ambrust Hill Wildlife Reservation** Code **VI-15** Town **Vinalhaven**
 1990 Coastal Scenic Inventory Critical Areas Program Maine State Planning Office

Scenic Evaluation

SI: Special Interest
 SC: Scoring
 IP: Indicators Present

SI	SC	IP
	6	X
	3	
	6	X
	9	X
	3	X
	12	X
	9	X
		6
42		

1. Landform
Elevation
Slope
2. Open Land
3. Shoreline Configuration
4. Scenic Features
5. Scenic Quality of Water
Duration of View
Type of Water
Quality of Horizon
Indicators Present

X	7
	3
	7
X	7
	7
31	
73	

6. Landscape Character
Land Use
Roadside Characteristics
Settlement Characteristics
 7. Vegetation
 8. Composition & Effect
Field Evaluation
- TOTAL SCORE**

Viewshed Description

Ambrust Hill Wildlife Reservation occupies a prominent position on the east side of Carver's Harbor at the entrance to Vinalhaven. The old quarry site, now overgrown with dense evergreens, offers an unexpected counterpoint to the trim composition of homes and commercial buildings along Main Street. The reservation preserves remnants of Vinalhaven's first quarrying activity, which produced paving blocks for many mainland city streets. From the high point of land, at elevation 110 feet above sea level, hikers are afforded filtered views of Matinicus Island, Wooden Ball Island, and Seal Island. The landscape in the foreground is characterized by dramatic steep cliffs, abandoned quarries, narrow pathways, and small streams.

Viewshed Management Recommendations

Aggressive vegetation management to preserve island views and open up new vistas to other parts of the island and Penobscot Bay.

View looking southwest across the Reservation toward Penobscot Bay.



Scenic Area Location

Scenic Area Ambrust Hill Wildlife Res. Code VI-15 Town Vinalhaven
USGS Quadrangle: 7.5 minute series

