

ISLESBORO



- Grindle Point
- Ferry Road
- Hinckley Beach
- West Side Road
- Crow Cove
- Seal Harbor
- Turtle Head Cove
- Parker Cove
- Sabbathday Harbor
- Billy's Shore
- Islesboro Harbor
- Charlotte's Cove
- Dark Harbor
- Main Road Overlook
- Pendleton Point
- Kissel Point Road
- Mill Creek
- Broad Cove



ISLESBORO

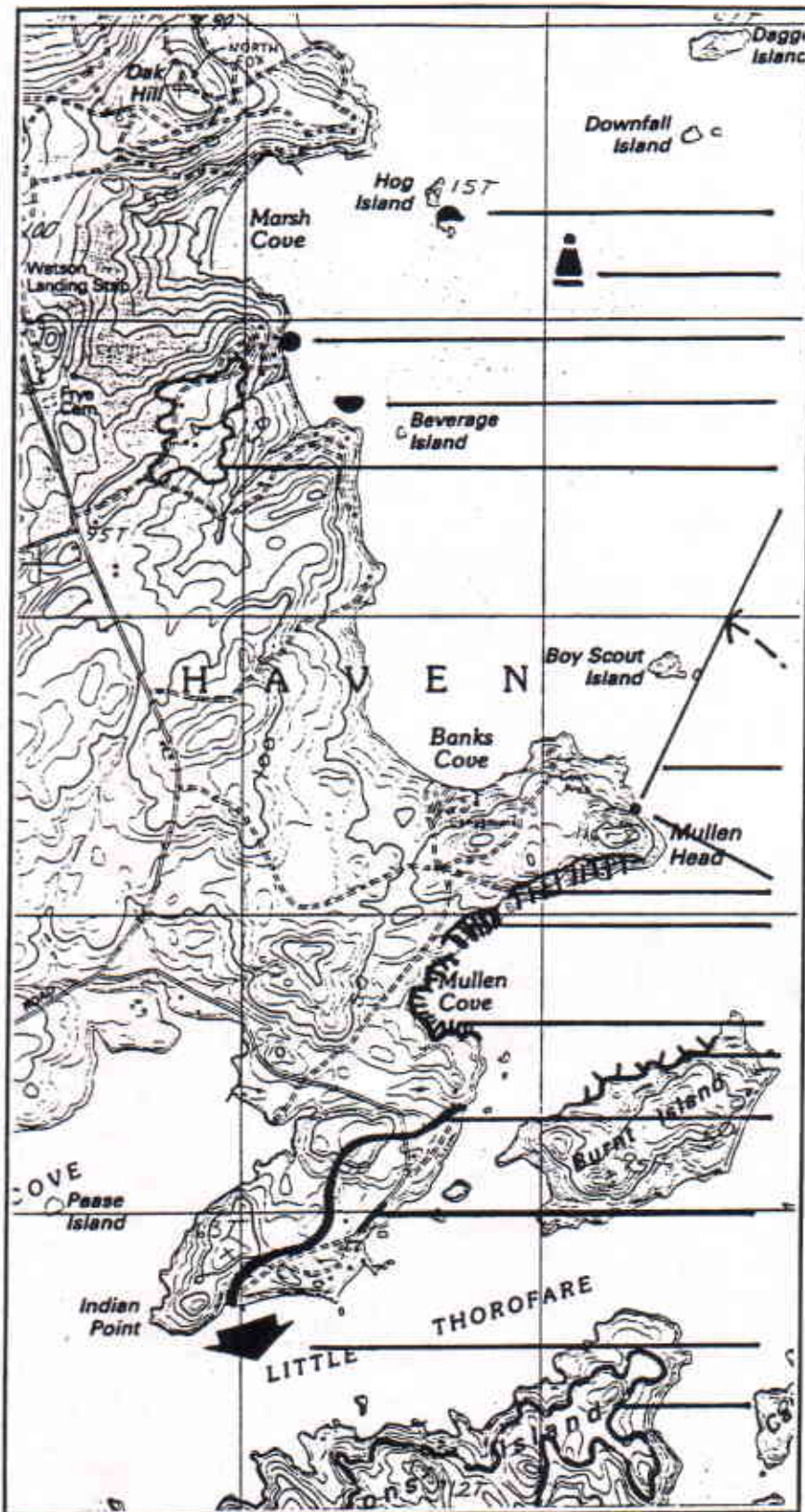
Islesboro is a place of remarkable charm and great mystery. Its proximity to the mainland via the State Ferry Service out of Lincolnville gives it easy access for tourists, summer visitors, and year-round residents alike. In recent years Islesboro has drawn a considerable number of weekend bicyclists, attracted by its meandering, well kept roads, invigorating climate, and slow pace. Its land area is just over 14 square miles.

The island's scenic attributes are a function of many factors:

- Islesboro's rural residential character is unique to the three major islands examined in this study. Most of the roads are lined with well sited and generously spaced homes and cottages, although the majority of the larger, more historic homes are well hidden down private drives.
- The land use patterns on the island can be categorized into several distinct settings:
 - Old farm rural residential areas (e.g., West Side Road)
 - Medium density residential areas (e.g., Islesboro Harbor)
 - Enclosed woodlands
 - Old Summer Colony (e.g., Dark Harbor).
- The physical geography of the island contributes to its special visual quality. The island is divided by The Narrows - as the name implies, a thin spit of sand and rock - into northern and southern halves, each with its own unique landscape character. North of the Narrows one finds low rolling hills, scattered fields, and modest farmhouses set along a loop road. While the land achieves a high point near the northern tip, the landscape is quite closed and affords minimal contact with Penobscot Bay. The shoreline exhibits a strong pattern of open coves providing protective moorings and highly diverse views when seen from elevated positions.
- The southerly half of Islesboro is highly configured on the western side, with large, sparsely settled islands set in the foreground. The eastern shoreline, facing Penobscot Bay, is relatively straight, broken only by occasional indentations and smaller coves. A pronounced ridge runs along much of the southern half of the island, affording periodic views to the east. The Dark Harbor area contains the majority of the large older homes, set on the shoreline in buttressed groupings. With a few exceptions, most of the landscape is relatively closed, characterized by overgrown fields, woodlands abutting the roadways, and private property.

- The most memorable views of the island from the water are of its well known cultural features: the rambling old cottages, especially in Dark Harbor facing Gilkey Harbor, the Lighthouse, and the Ferry Landing. The islands immediately offshore add a sense of protection and mystery, allowing the landscape to unfold in layers. The small coves that contribute to the high level of scenic quality from the land-based views are seen as minor variations in the coastline when seen from the water.
- The major physical landmarks on the island include the Ferry Landing, the village of Dark Harbor, Pendleton Point, Turtle Cove, Broad Cove, and the Narrows.
- Islesboro is noted for its collection of summer cottages that have been well documented in Earle Shettleworth's The Summer Cottages of Islesboro, 1890-1920.
- Several established fields punctuate the landscape, providing directed and relatively narrow vistas to the water. While the scale of these pastures is relatively small when compared to the open land found on the mainland, their relative scarcity and the contrast they offer makes them an important component of the landscape.
- The visual interest of the island is not confined to its shoreline. From all major public vantage points the views extend out to include a rich cross section of Penobscot Bay: the mainland to the east, west and north, the larger islands immediately offshore (Warren, Spruce, Job, 200 Acre), and Deer Isle on the far eastern horizon. Sailboats and other marine traffic add a constant visual accent to its waters.

FIGURE 7 KEY TO MAPS



Scenic Features

Island

Lighthouse

Beach

Mooring

Open Space > 10 Acres

One Mile Radius

Angle of View

Slopes

> 25%

> 40%

Shoreline Configuration

1/4 Mile

1/2 Mile

Scenic Area Boundary

View from Public Road

Intermittent View

Elevation > 100'

Scenic Area Evaluation Form

Scenic Area **Grindel Point**
1990 Coastal Scenic Inventory

Code **IS-01**
Critical Areas Program

Town **Islesboro**
Maine State Planning Office

Scenic Evaluation

SI: Special Interest
SC: Scoring
IP: Indicators Present

SI	SC	IP
	3	X
	6	X
X	9	XX
	9	
	12	
X	9	X
		5
48		

1. Landform
Elevation
Slope
2. Open Land
3. Shoreline Configuration
4. Scenic Features
5. Scenic Quality of Water
Duration of View
Type of Water
Quality of Horizon
Indicators Present
Desktop Subtotal

	6
	2
	5
	6
X	7
26	

6. Landscape Character
Land Use
Roadside Characteristics
Settlement Characteristics
7. Vegetation
8. Composition & Effect
Field Evaluation

74

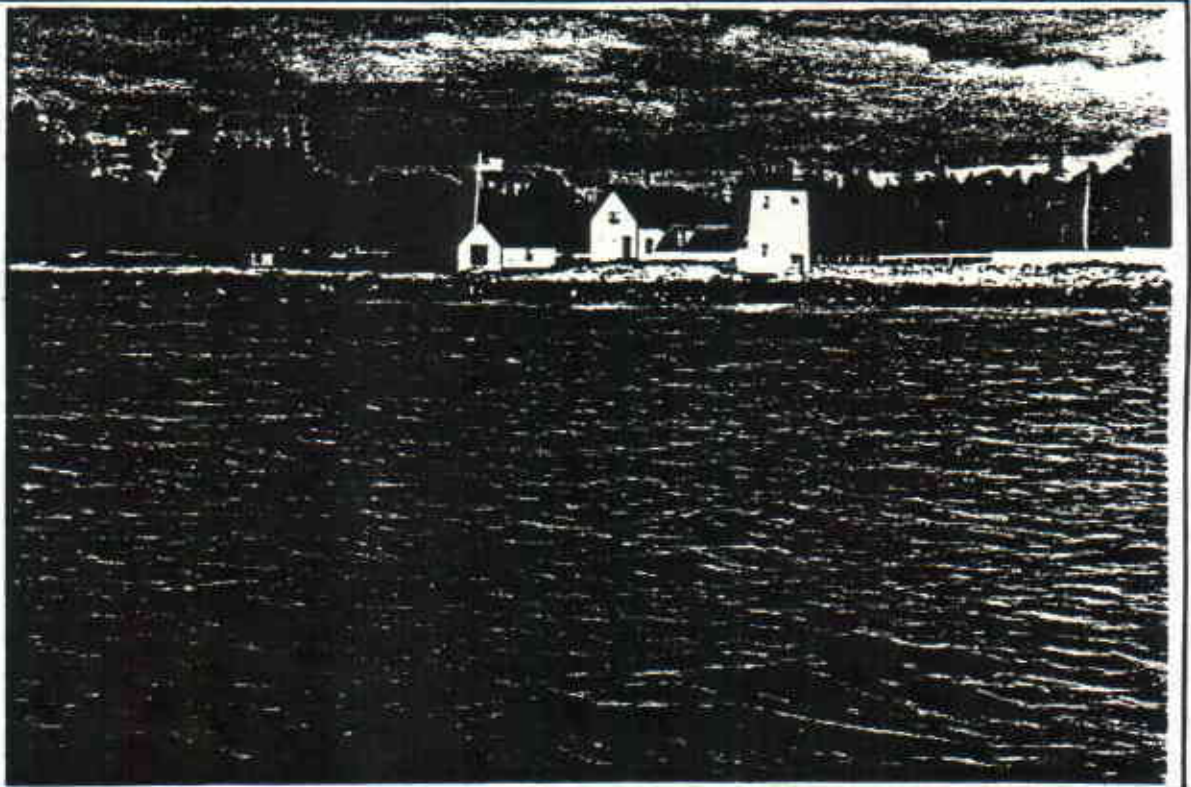
TOTAL SCORE

Viewshed Description

The public gateway into Islesboro. The scenic area includes the public landing with lighthouse and museum (listed on the National Register of Historic Places), an active harbor with moorings for various types and sizes of boats, and views to Spruce Island, Warren Island, and 700 Acre Island. A large open green affords dramatic, panoramic views of the lighthouse and the harbor, extending across Penobscot Bay to Lincolnville and the Camden Hills. The town pier offers unobstructed views to the south toward the islands and to the east across Gilkey Harbor to several historic "cottages". One of the most public and easily accessed water access points on the island.

Viewshed Management Recommendations

Separate parking from the historic buildings and adjacent green. Remove or relocate overhead utility lines to make them less obvious. Incorporate interpretive signage in limited areas. Remove the brick ticket booth if it no longer serves a public function. Clean stone beach of litter and debris. Replace the fencing along Ferry Road with a design of compatible type and color. Select color of slip and ramp mechanism to complement lighthouse.



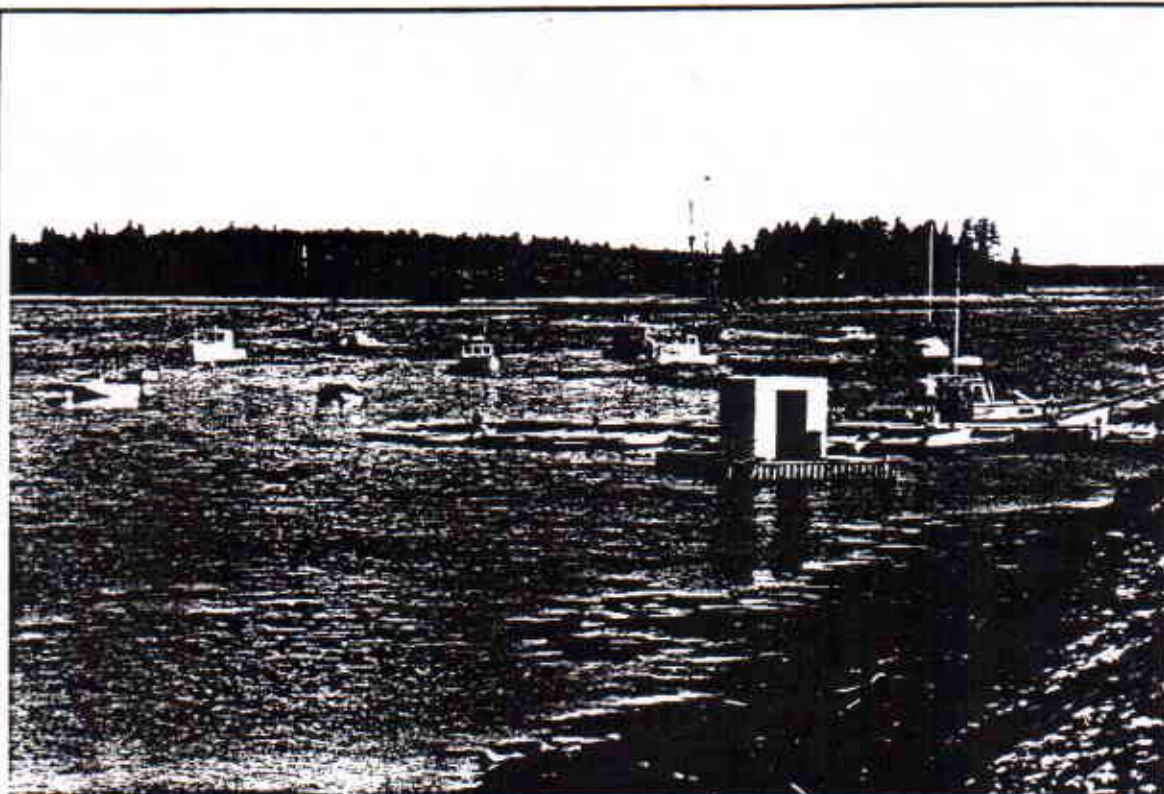
Grindel Point
Lighthouse as seen
from from the Isles-
boro Ferry

Scenic Area Evaluation Form

Scenic Area Grindel Point
1990 Coastal Scenic Inventory

Code IS-01
Critical Areas Program

Town Islesboro
Maine State Planning Office



*Looking south from
the public landing
toward Spruce Is-
land*



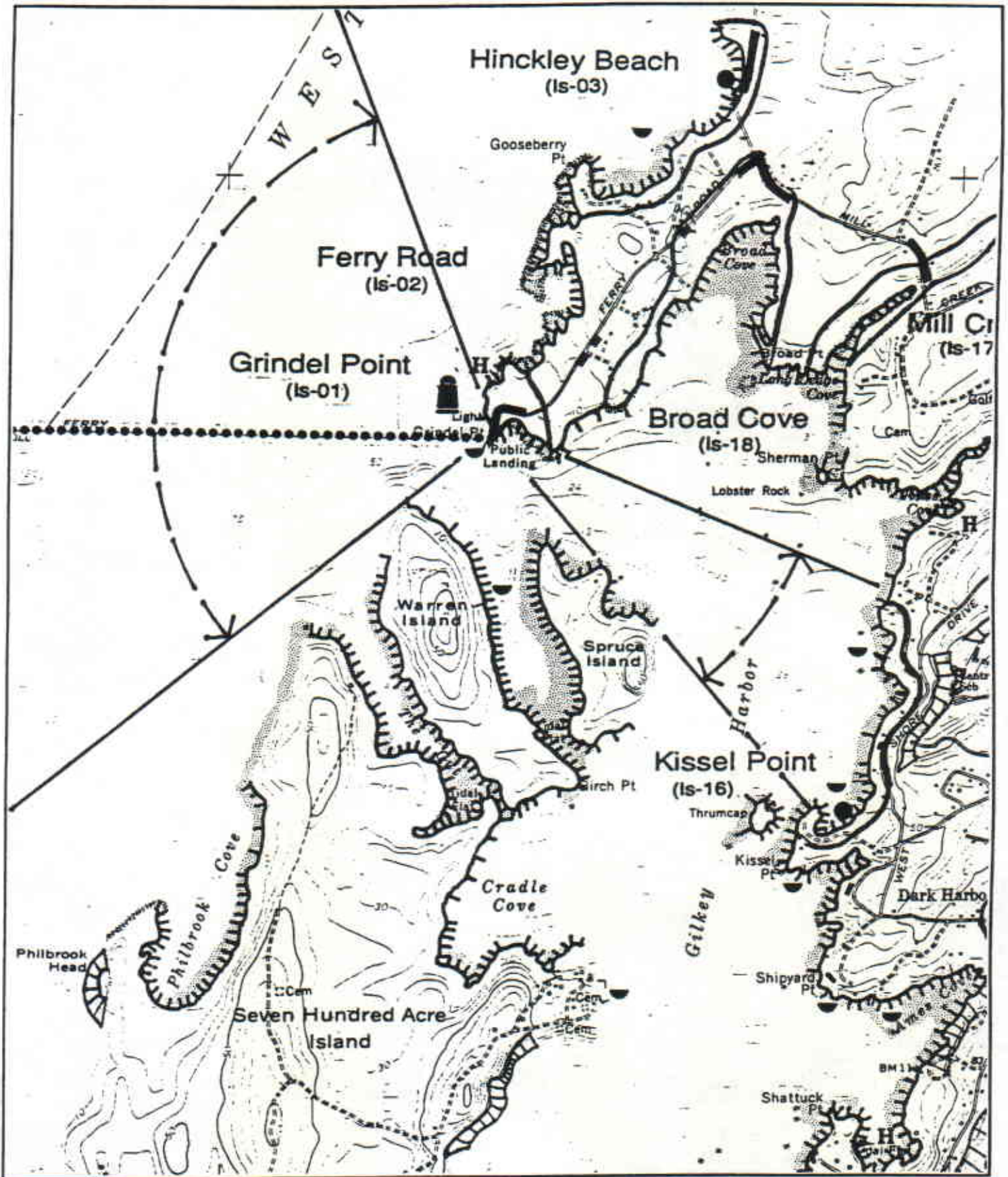
*Looking west/
southwest to the
Camden Hills and
Warren Island*

Scenic Area Location

Scenic Area Grindel Point
Islesboro USGS Quadrangle: 7.5 minute series

Code IS-01

Town Islesboro



Scenic Area Evaluation Form

Scenic Area **Ferry Road**
1990 Coastal Scenic Inventory

Code **IS-02**
Critical Areas Program

Town **Islesboro**
Maine State Planning Office

Scenic Evaluation

SI: Special Interest
SC: Scoring
IP: Indicators Present

SI	SC	IP
	3	X
	6	X
	3	X
	3	
	9	X
	6	X
		5
30		

1. Landform
Elevation
Slope
 2. Open Land
 3. Shoreline Configuration
 4. Scenic Features
 5. Scenic Quality of Water
Duration of View
Type of Water
Quality of Horizon
- Indicators Present
Desktop Subtotal

	3
	2
	1
	3
	3
12	

6. Landscape Character
Land Use
Roadside Characteristics
Settlement Characteristics
 7. Vegetation
 8. Composition & Effect
- Field Evaluation

42	
----	--

TOTAL SCORE

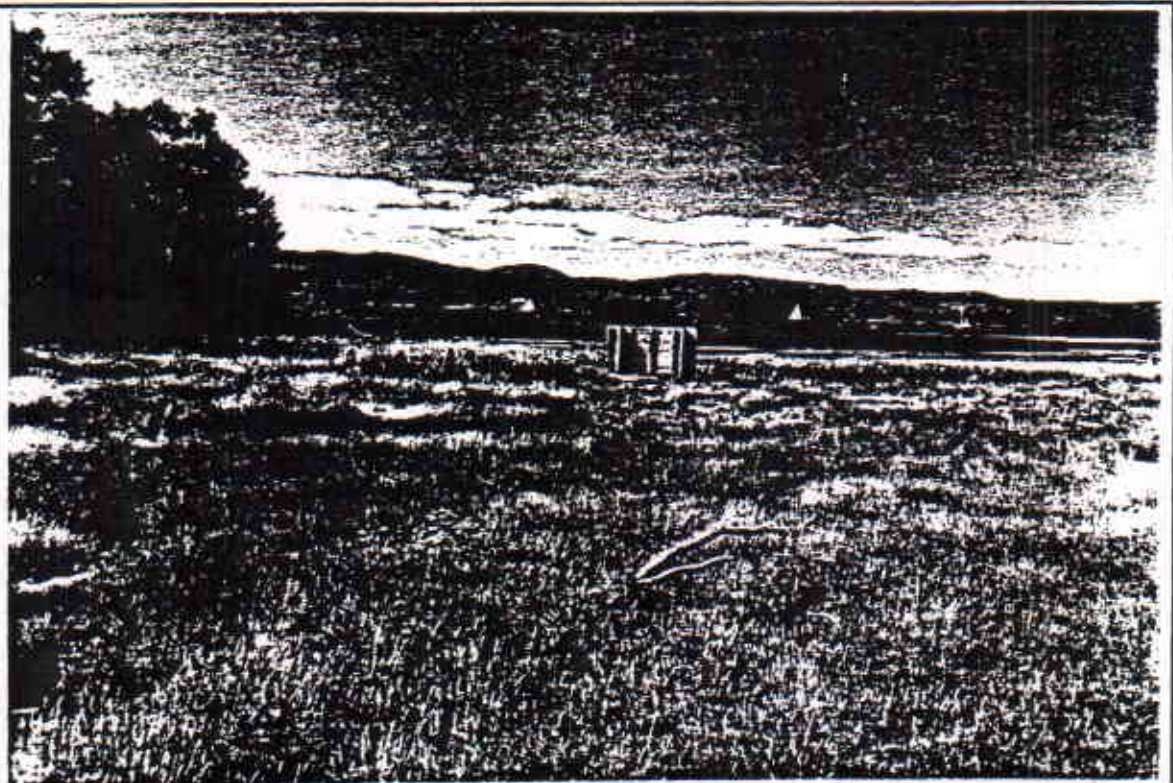
Viewshed Description

A series of limited views across salt marshes at the edge of Ferry Road, extending to the Camden Hills. Viewer position is near water level. The main view corridor is through one of the utility right of ways developed to supply power to the island. Sailboats are often seen cruising the waters between the mainland and Islesboro. A place of local importance, due to the limited duration of view.

Viewshed Management Recommendations

Install low vegetative screening on the east side of the warning sign used to notify navigators of the presence of the cable crossing.

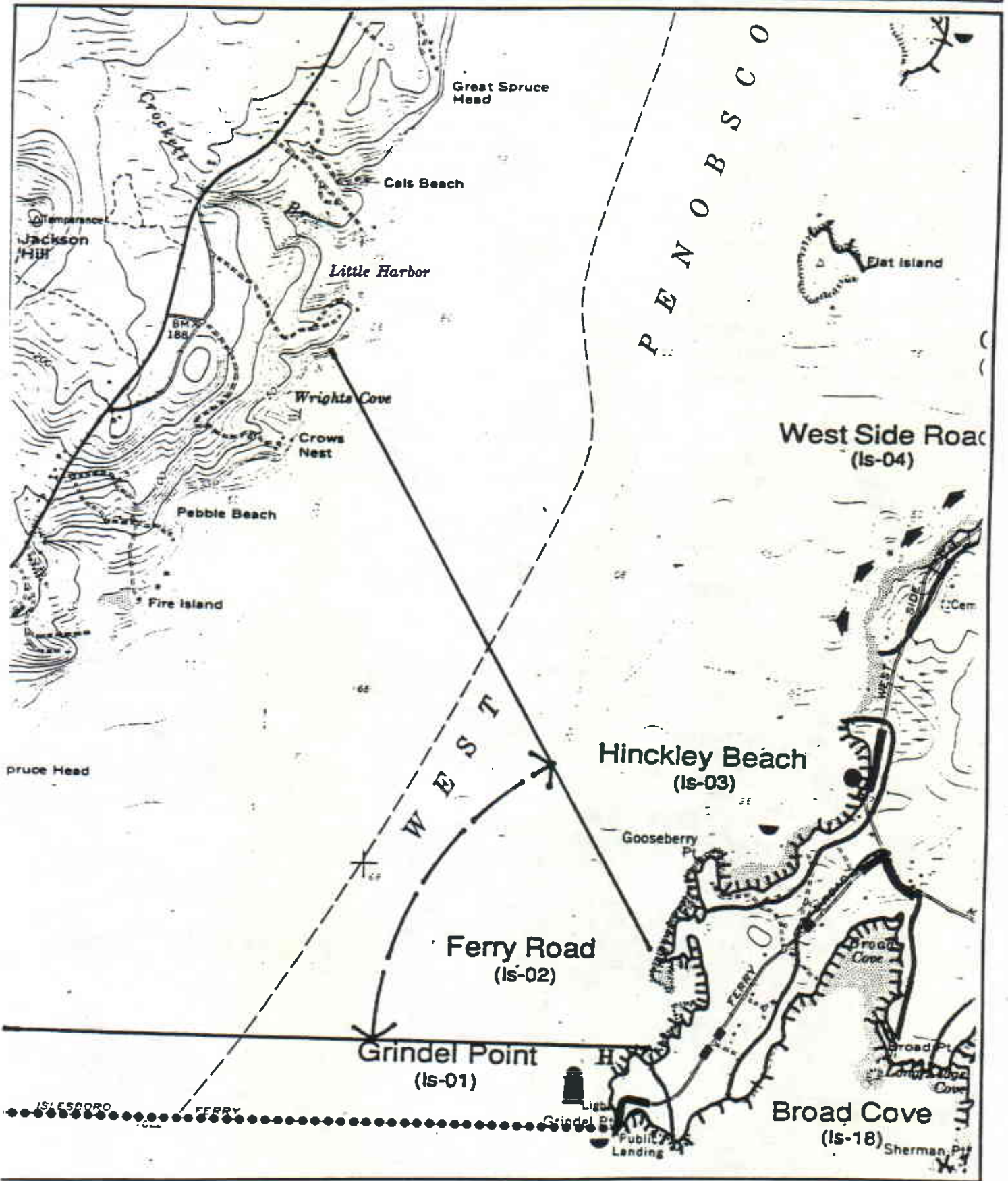
View to Lincolnville and the Camden Hills from the cable clearing on the west side of the Ferry Road



Scenic Area Location

Scenic Area Ferry Road Code IS-02
Islesboro USGS Quadrangle: 7.5 minute series

Town Islesboro



Scenic Area Evaluation Form

Scenic Area **Hinckley Beach**
1990 Coastal Scenic Inventory

Code **IS-03**
Critical Areas Program

Town **Islesboro**
Maine State Planning Office

Scenic Evaluation

SI: Special Interest
SC: Scoring
IP: Indicators Present

SI	SC	IP
	6	X
X	9	XX
	6	X
	9	X
X	9	X
		6
		39

1. Landform
Elevation
Slope
 2. Open Land
 3. Shoreline Configuration
 4. Scenic Features
 5. Scenic Quality of Water
Duration of View
Type of Water
Quality of Horizon
Indicators Present
- Desktop Subtotal

	3
	2
	3
	4
	5
	17
56	

6. Landscape Character
Land Use
Roadside Characteristics
Settlement Characteristics
 7. Vegetation
 8. Composition & Effect
Field Evaluation
- TOTAL SCORE**

Viewshed Description

Hinckley Beach is one of the most open shorefront vistas found along West Side Road, giving the passer-by a panoramic view of Penobscot Bay and the Camden Hills over a narrow cobble beach. Views to the southeast are layered by the shoreline configuration of Gooseberry Point. The point is sparsely vegetated with weathered spruce and fir. Limited area to pull off the road restricts the degree of accessibility. A utility corridor parallels the beach on water side of the roadway. A few cottages at the south end are virtually undetectable among the dense stand of evergreens.

Viewshed Management Recommendations

Provide parking facilities as demand warrants.

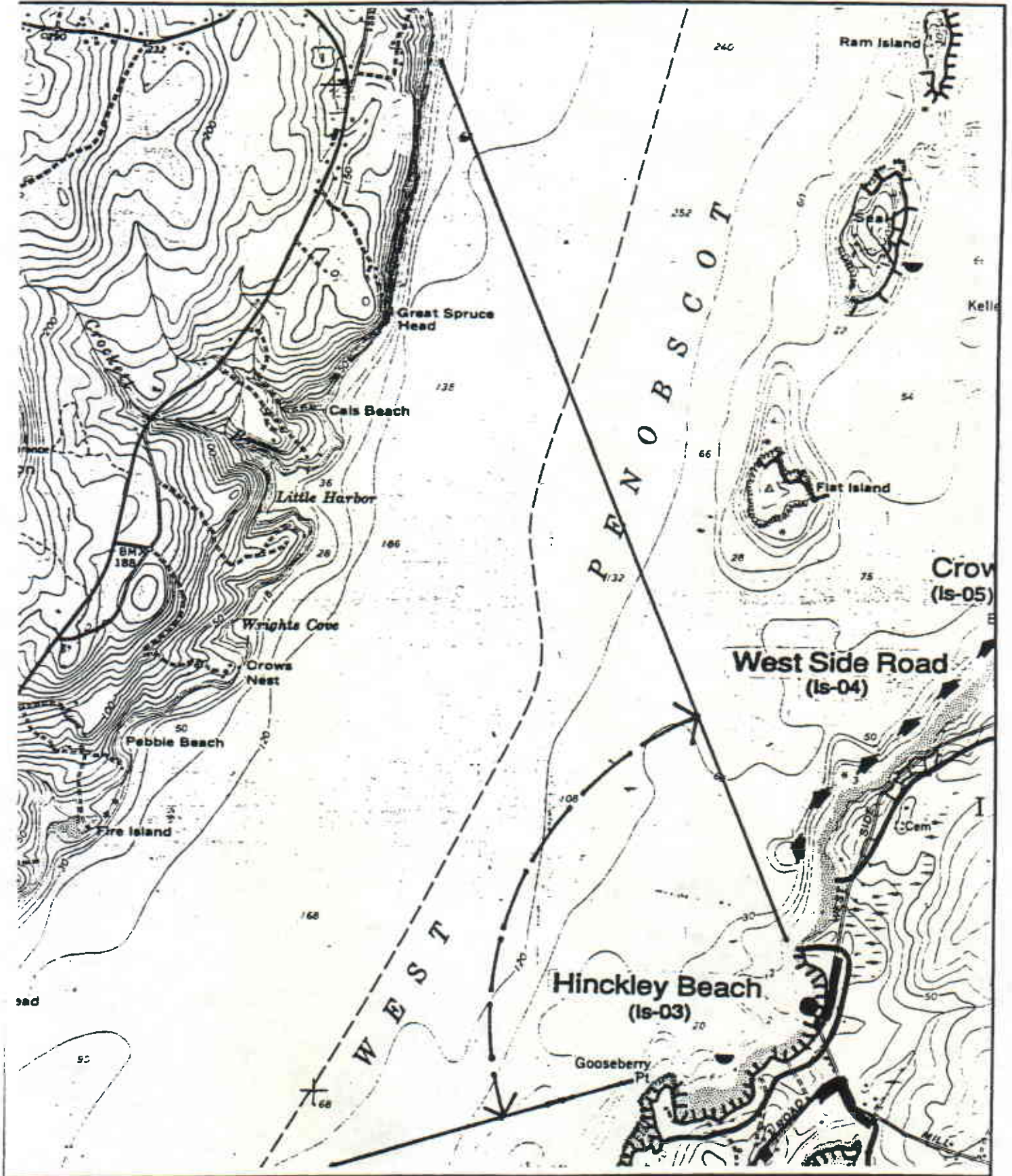
Low-tide view of Hinckley Beach, looking toward Gooseberry Point, with the Camden hills in the background



Scenic Area Location

Scenic Area **Hinckley Beach** Code **IS-03**
Islesboro USGS Quadrangle: 7.5 minute series

Town **Islesboro**



Scenic Area Evaluation Form

Scenic Area **West Side Road**
1990 Coastal Scenic Inventory

Code **IS-04**
Critical Areas Program

Town **Islesboro**
Maine State Planning Office

Scenic Evaluation

SI: Special Interest
SC: Scoring
IP: Indicators Present

SI	SC	IP
	3	
	2	X
	6	X
	6	X
	6	X
	9	X
	6	X
		6
38		

1. Landform
Elevation
Slope
 2. Open Land
 3. Shoreline Configuration
 4. Scenic Features
 5. Scenic Quality of Water
Duration of View
Type of Water
Quality of Horizon
- Indicators Present
Desktop Subtotal

X	7
	6
	6
	6
X	8
33	

6. Landscape Character
Land Use
Roadside Characteristics
Settlement Characteristics
7. Vegetation
8. Composition & Effect
Field Evaluation

71

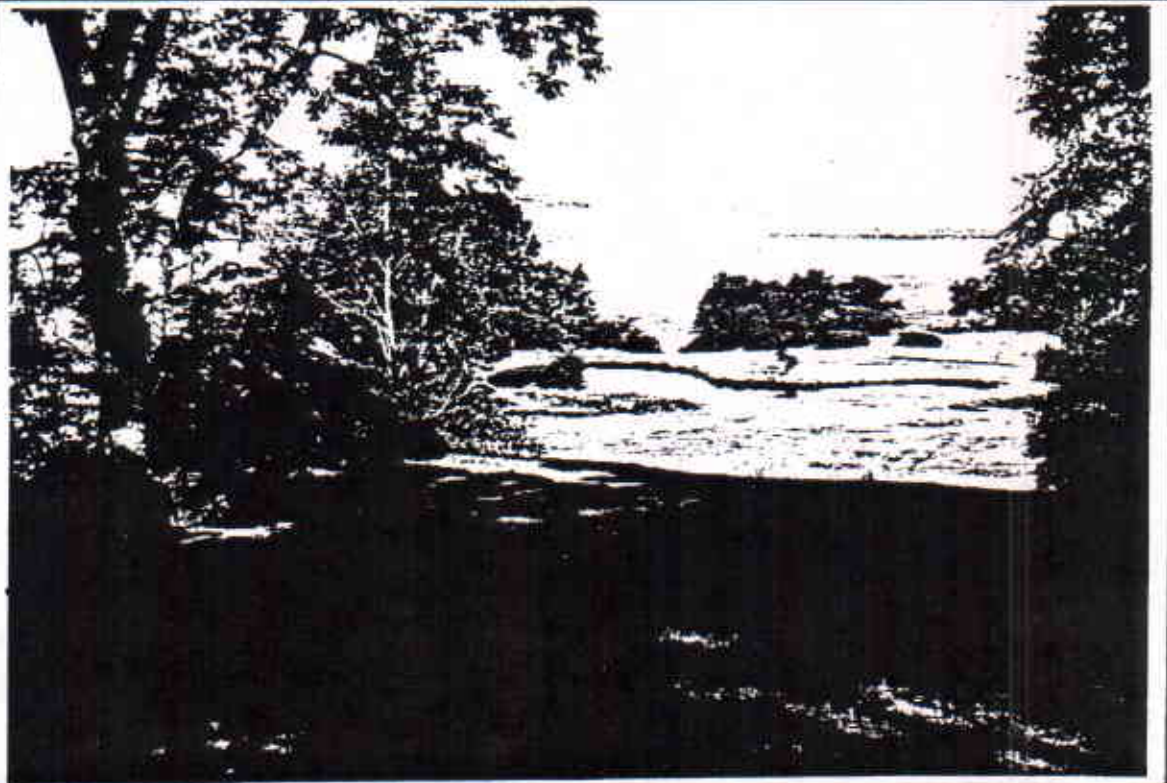
TOTAL SCORE

Viewshed Description

A highly unified rural landscape, characterized by well preserved vernacular architecture, mature roadside vegetation, and filtered views to West Penobscot Bay and Flat Island, Seal Island, and Ram Island. West Side Road follows the contours of the land, affording views 20 to 40 feet above sea level. Significant stands of ash, black locust, red oak, and birch frame views to the water. Many of the homes are set back several hundred yards from the road and are visible across rolling fields punctuated by farm ponds and white birch trees.

Viewshed Management Recommendations

Screen power cable crossing where it is visible next to the West Side Road. Use careful vegetation management to open views from the road to the Bay. Use design guidelines and site plan review to maintain the architectural and landscape integrity found within the scenic area.

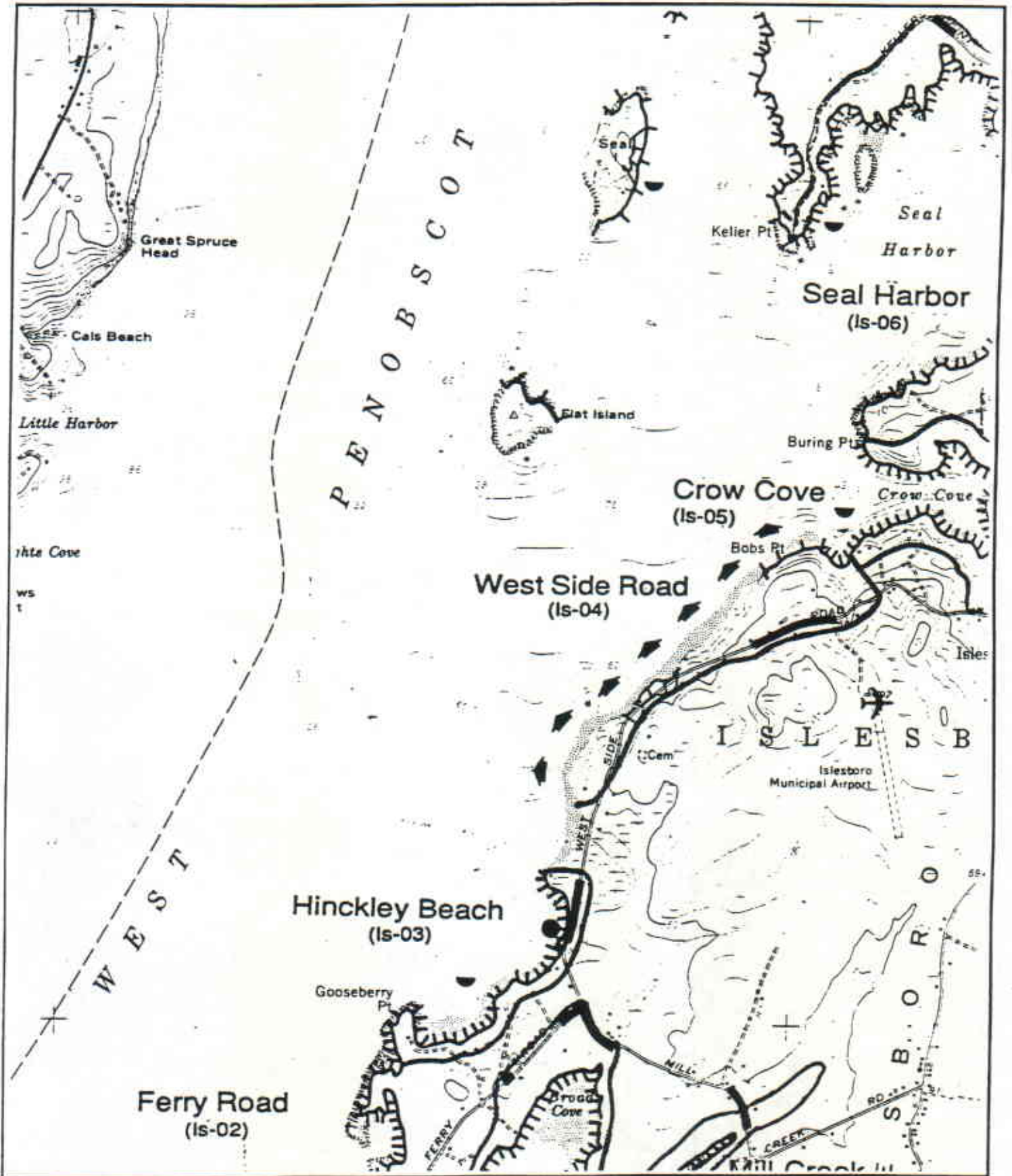


Northerly view from fields along West Side Road across West Penobscot Bay toward Northport.

Scenic Area Location

Scenic Area West Side Road **Code IS-04**
Islesboro USGS Quadrangle: 7.5 minute series

Town Islesboro



Scenic Area Evaluation Form

Scenic Area Crow Cove
1990 Coastal Scenic Inventory

Code IS-05
Critical Areas Program

Town Islesboro
Maine State Planning Office

Scenic Evaluation

SI: Special Interest
SC: Scoring
IP: Indicators Present

SI	SC	IP
	3	X
	6	X
	6	X
	3	
	6	X
	6	X
		5
30		

1. Landform
Elevation
Slope
2. Open Land
3. Shoreline Configuration
4. Scenic Features
5. Scenic Quality of Water
Duration of View
Type of Water
Quality of Horizon
Indicators Present
Desktop Subtotal

	5
	3
	7
	7
22	

6. Landscape Character
Land Use
Roadside Characteristics
Settlement Characteristics
7. Vegetation
8. Composition & Effect
Field Evaluation

55

TOTAL SCORE

Viewshed Description

A relatively long, narrow cove that touches the Main Road at two locations. From the road the water appears almost totally enclosed. The undulating shoreline is seen above mud flats and salt marsh. Several varieties of marsh grasses offer a subtle change in color and texture at the edge of the road. A minor amount of residential development - primarily moorings, piers, and pleasure boats, are visible from the road. Parking along the narrow, curving road is not advised. A high degree of diversity, mystery, and naturalness contribute to the scenic quality. A view of local significance due to its limited length.

Viewshed Management Recommendations

Continued enforcement of shoreland zoning regulations to prevent further development along the waterfront.

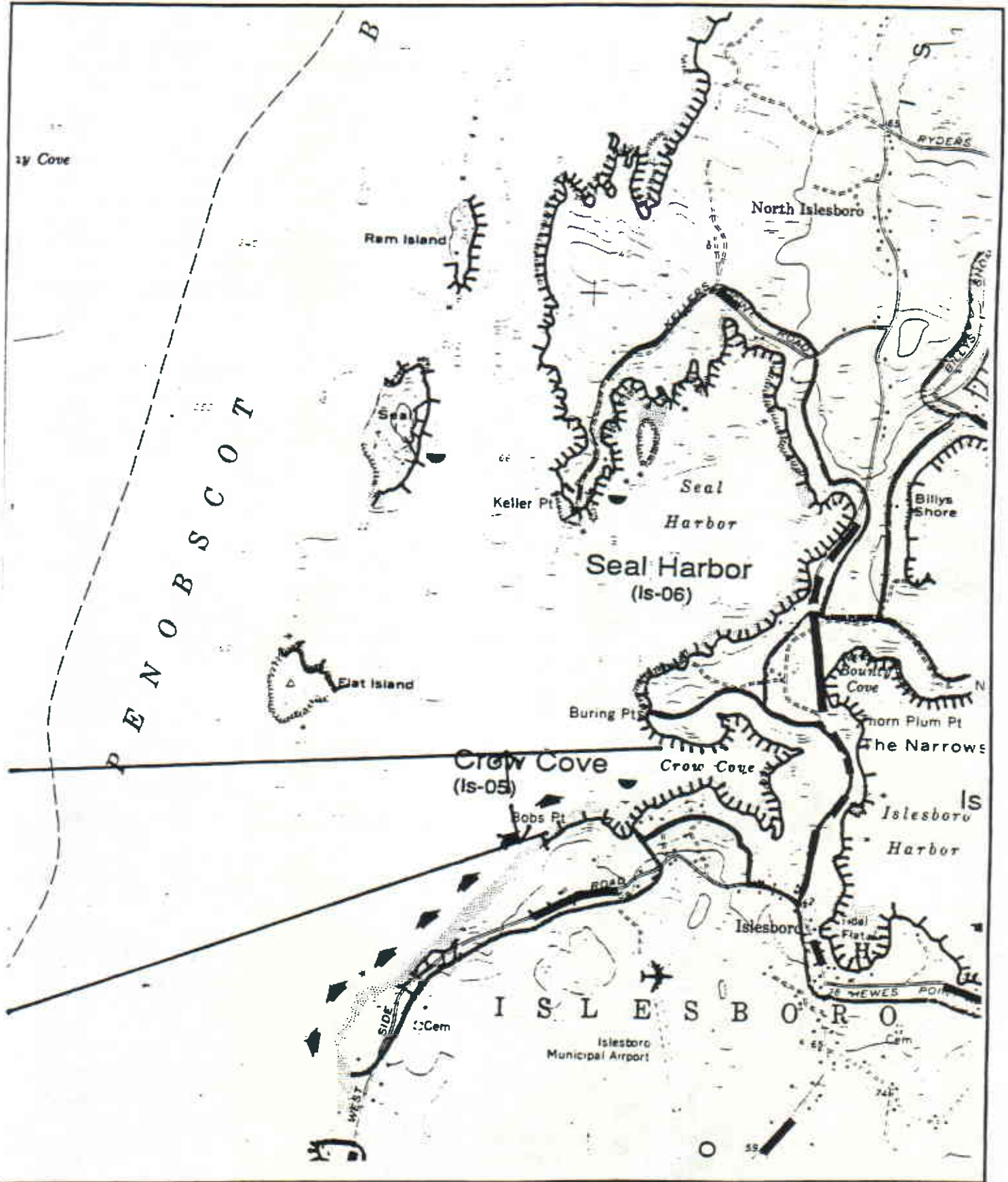
Westerly view of Crow Cove at low tide, looking toward the hills of Northport and Ducktrap Mountain.



Scenic Area Location

Scenic Area Crow Cove Code IS-05
Islesboro USGS Quadrangle: 7.5 minute series

Town Islesboro



Scenic Area Evaluation Form

Scenic Area Seal Harbor
1990 Coastal Scenic Inventory

Code IS-06
Critical Areas Program

Town Islesboro
Maine State Planning Office

Scenic Evaluation

SI: Special Interest
SC: Scoring
IP: Indicators Present

SI	SC	IP
	3	X
	6	X
	6	X
	6	X
	9	X
	9	X
		6
Indicators Present		
Desktop Subtotal		39

- Landform
Elevation
Slope
 - Open Land
 - Shoreline Configuration
 - Scenic Features
 - Scenic Quality of Water
Duration of View
Type of Water
Quality of Horizon
- Indicators Present
Desktop Subtotal

	5
	4
	3
	4
	6
22	
63	

- Landscape Character
Land Use
Roadside Characteristics
Settlement Characteristics
 - Vegetation
 - Composition & Effect
Field Evaluation
- TOTAL SCORE**

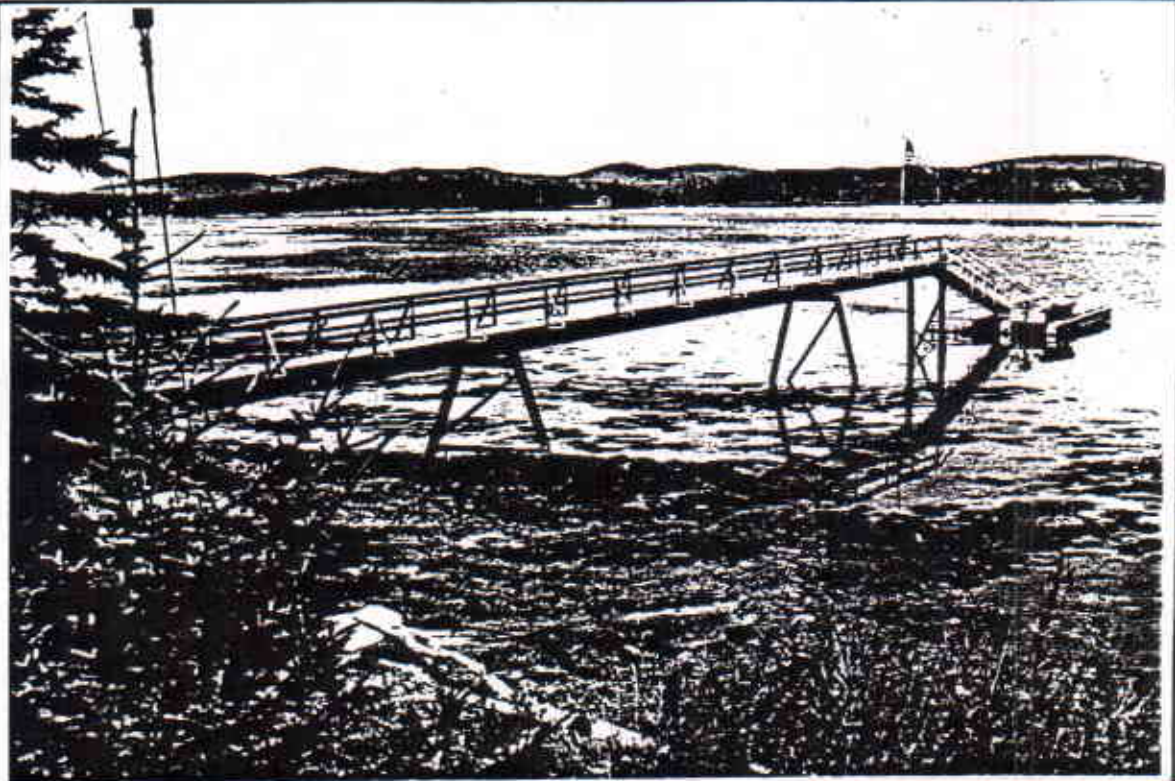
Viewshed Description

Seal Harbor is one of the largest coves on Islesboro, with several viewpoints along public roads. The primary viewing location is from the Main Road at an informal rest area in a grove of waterfront pines. While several private piers can be seen from this viewpoints, there are few visible signs of development within the harbor. Gravel roads on the north side of the harbor afford filtered views of the harbor across lawns and fields. The edge of the water is characterized by 15-20 foot cliffs and pebble beaches. The orientation of the cove is to the southwest, toward Keller Point and Flat Island, with the Camden Hills in the background. Parking is available for a limited number of cars along the roadway.

Viewshed Management Recommendations

Provide better definition of parking areas. Selective vegetation management is necessary to open new views or to maintain existing vistas to the harbor.

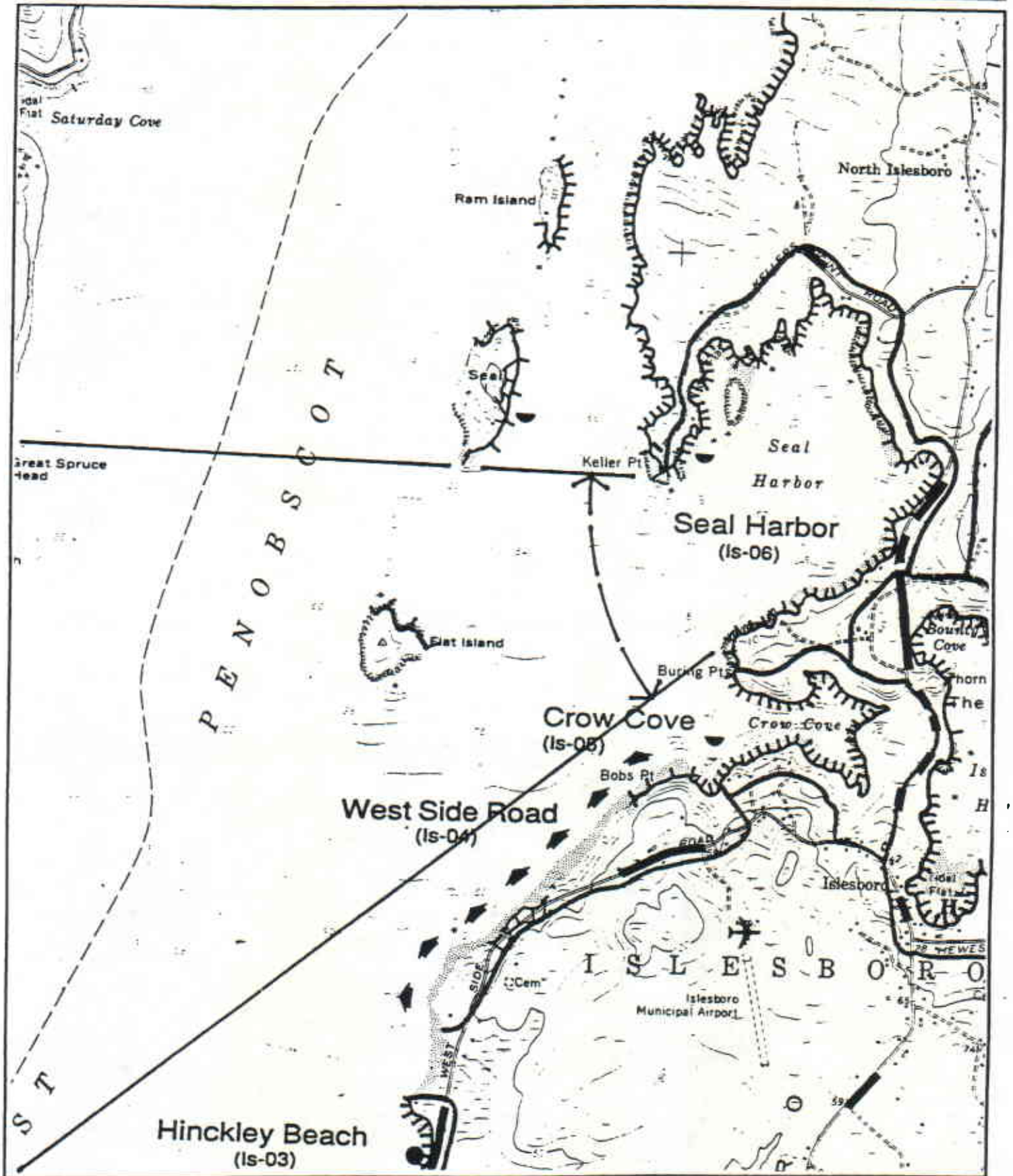
Westerly view from the main road toward Keller Point. Wooden pier in foreground is private.



Scenic Area Location

Scenic Area Seal Harbor **Code IS-06**
Islesboro USGS Quadrangle: 7.5 minute series

Town Islesboro



Scenic Area Evaluation Form

Scenic Area **Turtle Head Cove**
1990 Coastal Scenic Inventory

Code **IS-07**
Critical Areas Program

Town **Islesboro**
Maine State Planning Office

Scenic Evaluation

SI: Special Interest
SC: Scoring
IP: Indicators Present

SI	SC	IP
	3	
	3	X
	3	X
	6	
	6	X
	9	X
	6	X
		5
36		

1. Landform
Elevation
Slope
2. Open Land
3. Shoreline Configuration
4. Scenic Features
5. Scenic Quality of Water
Duration of View
Type of Water
Quality of Horizon
Indicators Present
Desktop Subtotal

	3
	2
	2
	2
	4
13	
49	

6. Landscape Character
Land Use
Roadside Characteristics
Settlement Characteristics
 7. Vegetation
 8. Composition & Effect
Field Evaluation
- TOTAL SCORE**

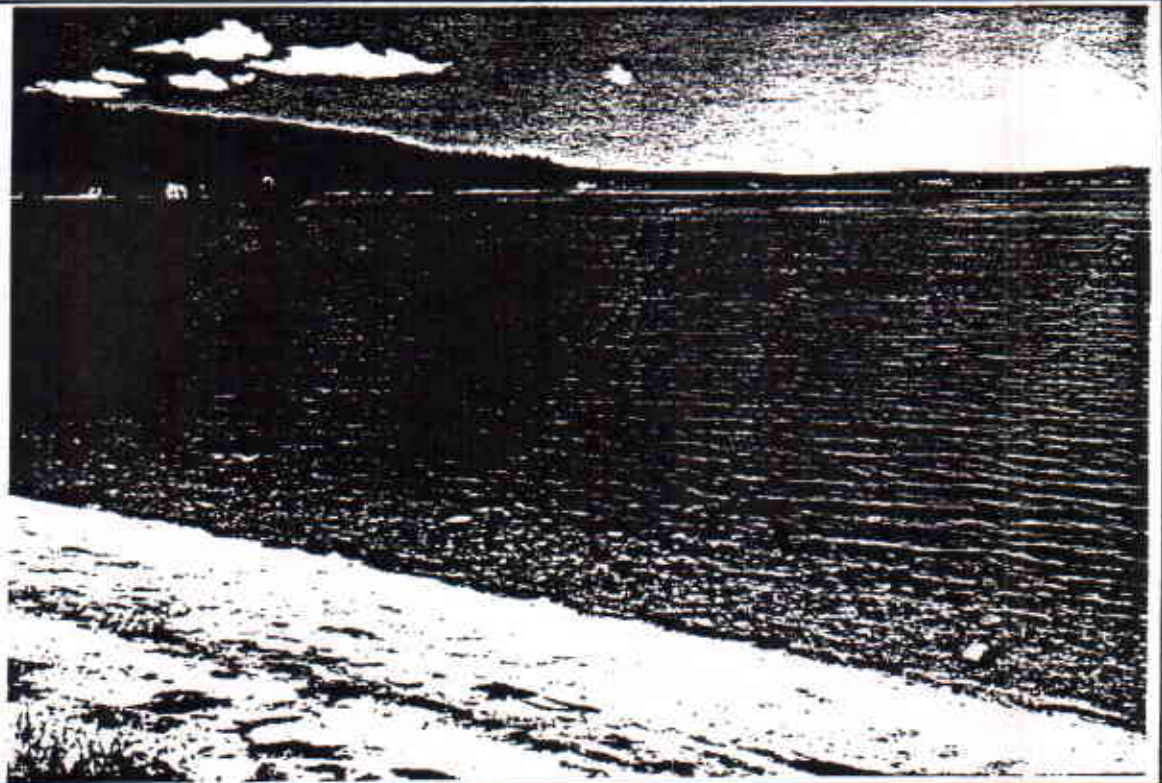
Viewshed Description

A broad, open cove oriented to the northwest toward Belfast Bay and Searsport. The cove is defined by Turtle Head, a prominent rocky headland on the north, and Marshall Point on the southwest. Meadow Point Road descends a long hill (elevation 200 feet) southwest of the cove to parallel the water for .3 miles at sea level. Parking is limited by a salt marsh on the east side of the road and the beach on the west side. Development in the immediate area is well screened and not visible from the public roadway. The beach at Turtle Head Cove is one of the most popular recreation areas on the Island.

Viewshed Management Recommendations

Provide limited amount of public parking.

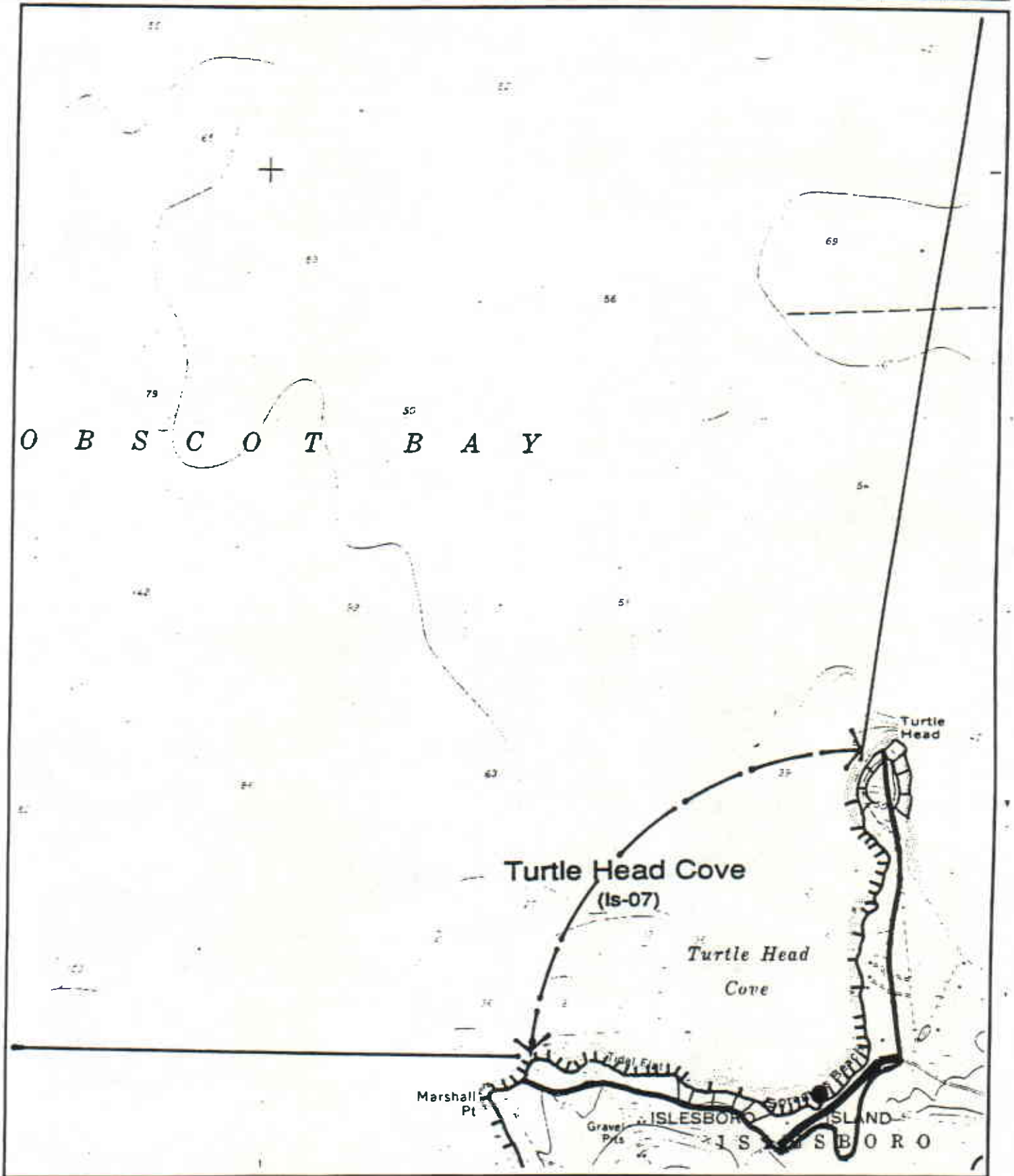
Northwesterly view from Sprague Beach toward Marshall Point and Bayside, five miles distant.



Scenic Area Location

Scenic Area **Turtle Head Cove** Code **IS-07**
Searsport USGS Quadrangle: 7.5 minute series

Town **Islesboro**



Scenic Area Evaluation Form

Scenic Area **Parker Cove**
1990 Coastal Scenic Inventory

Code **IS-08**
Critical Areas Program

Town **Islesboro**
Maine State Planning Office

Scenic Evaluation

SI: Special Interest
SC: Scoring
IP: Indicators Present

SI	SC	IP
X	6	X
	4	X
	6	X
	6	X
	6	X
X	12	X
	6	X
		7
46		

1. Landform
Elevation
Slope
2. Open Land
3. Shoreline Configuration
4. Scenic Features
5. Scenic Quality of Water
Duration of View
Type of Water
Quality of Horizon
Indicators Present

Desktop Subtotal

	6
	2
	3
	4
	6
21	

6. Landscape Character
Land Use
Roadside Characteristics
Settlement Characteristics
7. Vegetation
8. Composition & Effect
Field Evaluation

67

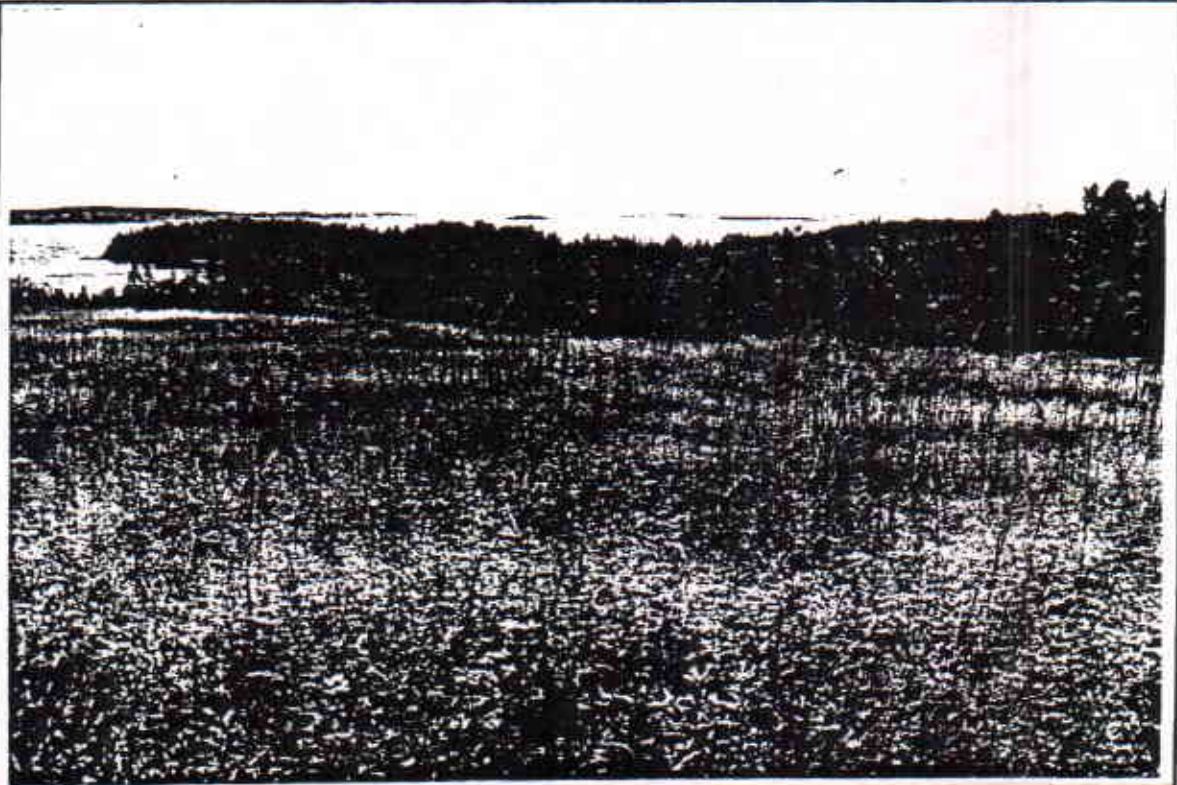
TOTAL SCORE

Viewshed Description

Parker Cove, Coombs Cove, and Hutchins Island occupy a prominent midground position in the view from the largest hill north of the Narrows. This panoramic view extends easterly to Cape Rosier and the islands of East Penobscot Bay and offers excellent opportunities to see large sailing vessels plying the waters of the bay. The viewing opportunity is limited to approximately .2 of a mile along Main Road.

Viewshed Management Recommendations

Preservation of open field on the east side of the road to maintain visual access to the bay. Conservation easements on the fields on the east side of the road. Site plan review to direct any new construction away from the fields and prevent blockage of the public view.



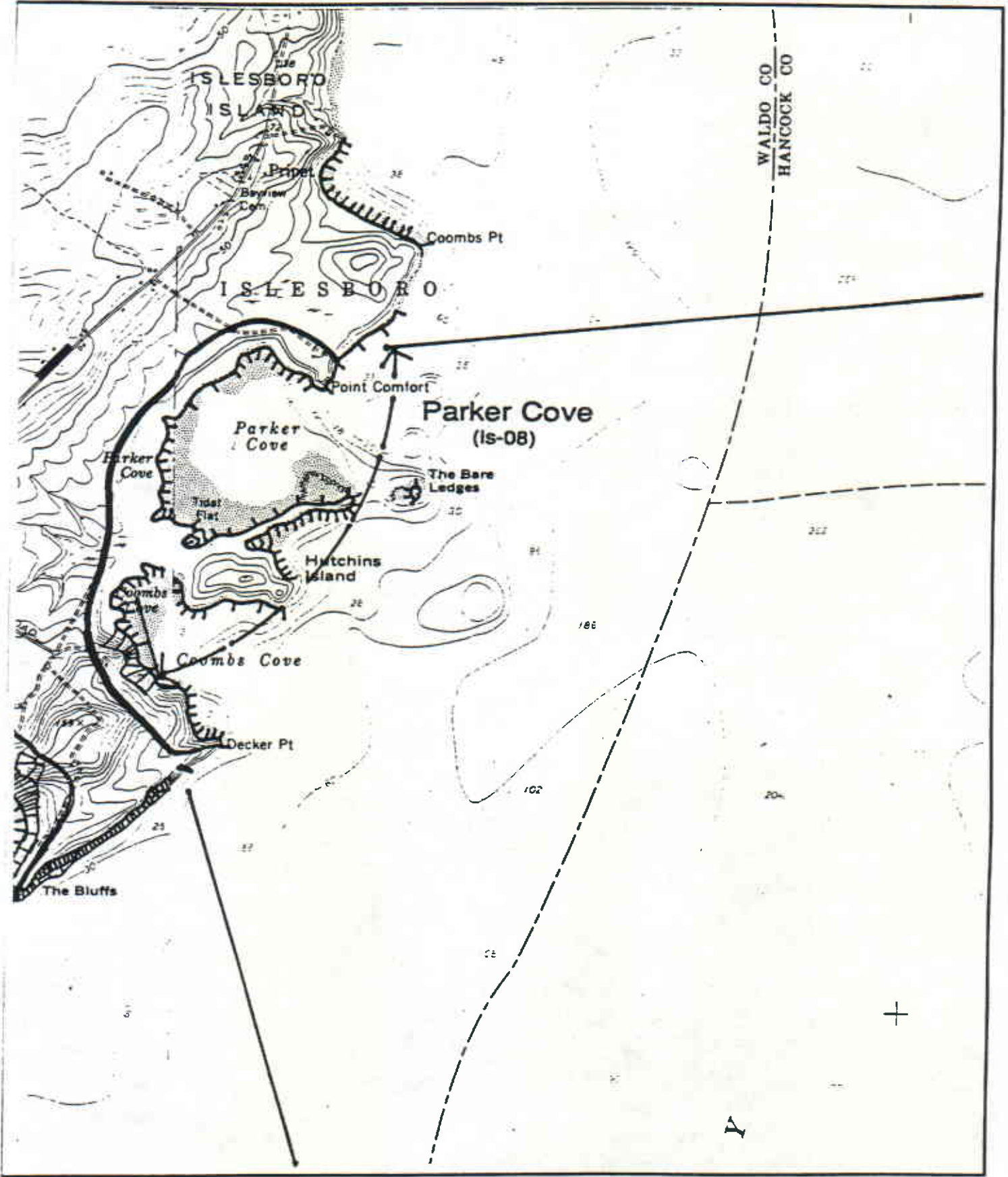
Westerly view from main road over old pasture land toward Parker Cove, Hutchins Island, and Coombs Cove.

Scenic Area Location

Scenic Area Parker Cove
Islesboro/Cape Rosier USGS Quadrange: 7.5 minute series

Code IS-08

Town Islesboro



Scenic Area Evaluation Form

Scenic Area Sabbathday Harbor Code IS-09
 1990 Coastal Scenic Inventory Critical Areas Program

Town Islesboro
 Maine State Planning Office

Scenic Evaluation

SI: Special Interest
 SC: Scoring
 IP: Indicators Present

SI	SC	IP
	2	
	3	
	6	
	6	
	3	
	12	
	9	
	41	

1. Landform
 Elevation
 Slope
2. Open Land
3. Shoreline Configuration
4. Scenic Features
5. Scenic Quality of Water
 Duration of View
 Type of Water
 Quality of Horizon
 Indicators Present
 Desktop Subtotal

	5
	3
	6
	6
	6
	26

6. Landscape Character
 Land Use
 Roadside Characteristics
 Settlement Characteristics
7. Vegetation
8. Composition & Effect
 Field Evaluation

67

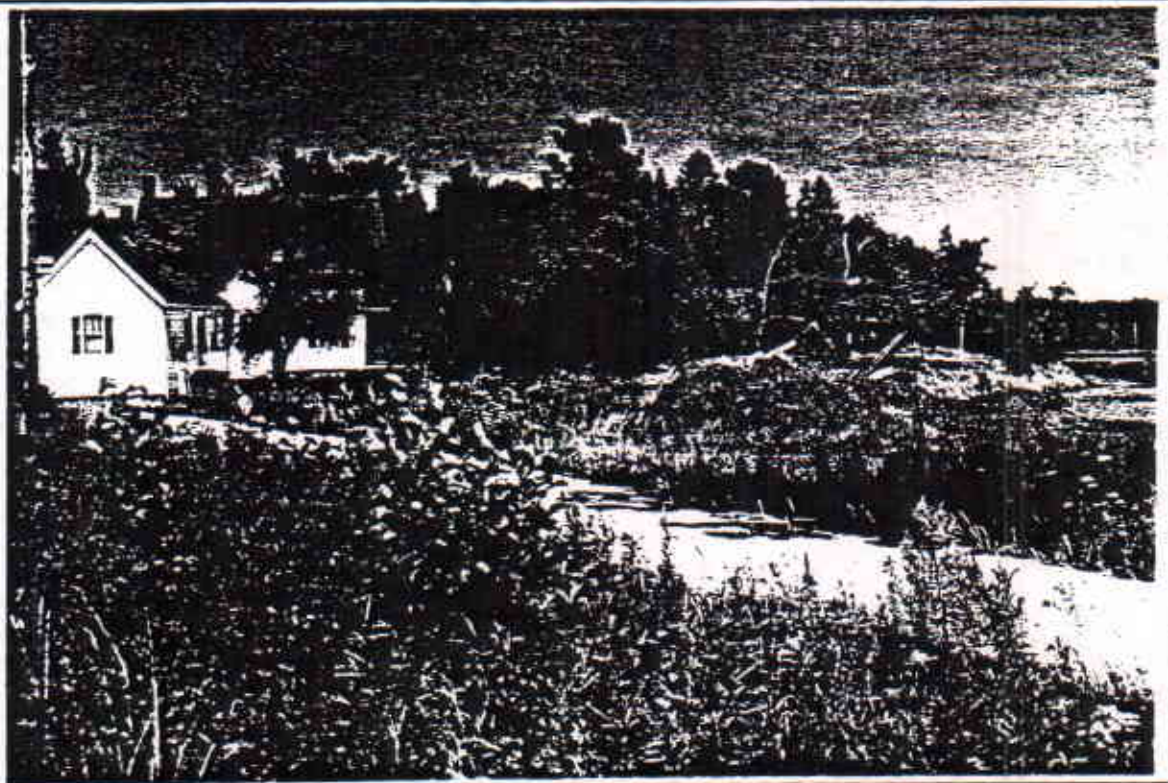
TOTAL SCORE

Viewshed Description

The end of Ryders Road affords a 180 degree view of Ryder Cove to the north and Sabbathday Harbor to the south. Ryder Cove is relatively small, well protected, and virtually free of any form of visible development along its northerly or easterly shoreline. Billys Shore Drive, which parallels the coastline, is rather heavily developed with a mixture of small year-round homes and stately summer cottages. Viewing opportunities are limited to filtered glimpses through mixed woods. While Sabbathday Harbor is defined by The Bluffs on the north and Fire Island on the south, it does not offer a substantial feeling of enclosure. Views to the water are primarily from the road, with no apparent point of public access, even though Ryder's Road is a former town landing.

Viewshed Management Recommendations

Protection of the lands surrounding Ryder Cove through conservation easements and/or strict adherence to Shoreline Zoning.



View looking north-east from Ryders Road toward Ryder Cove.

Scenic Area Evaluation Form

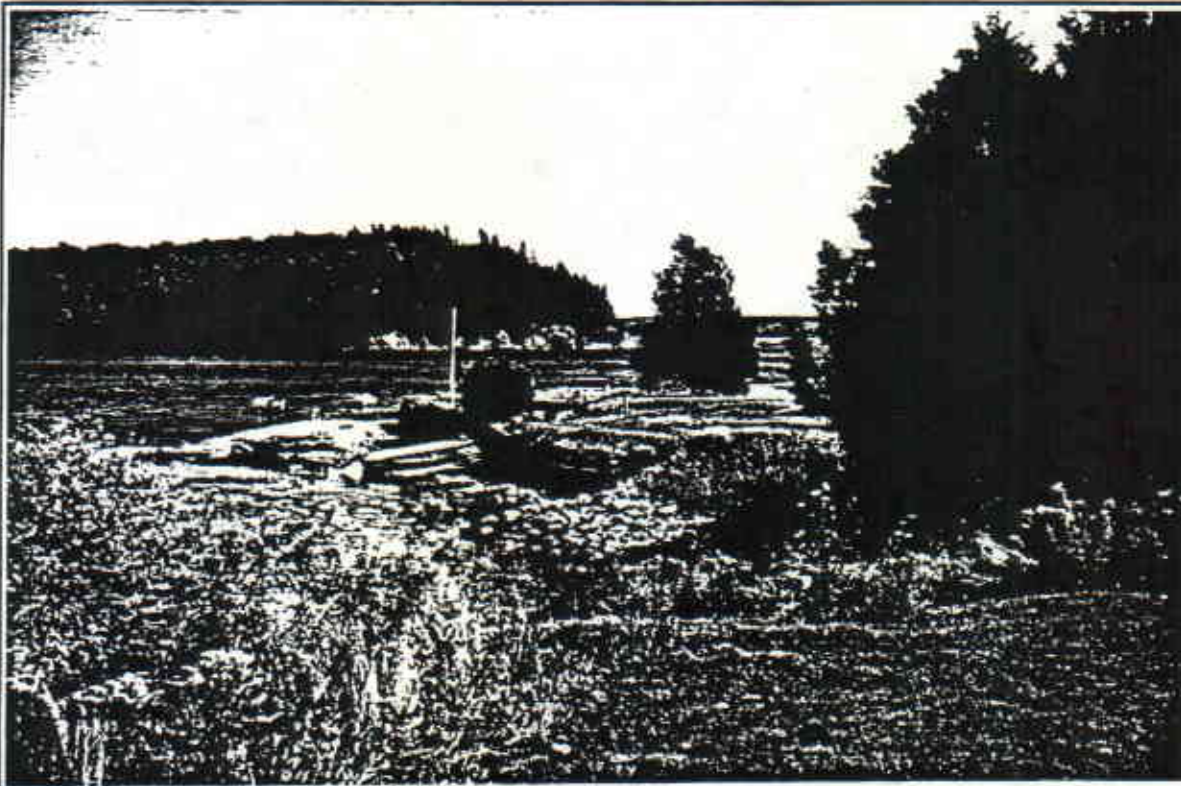
Scenic Area Sabbathday Harbor
1990 Coastal Scenic Inventory

Code IS-09
Critical Areas Program

Town Islesboro
Maine State Planning Office



The Head of the Cape at the southern end of Cape Rosier is four miles east south-east of Sabbathday Harbor across Penobscot Bay.

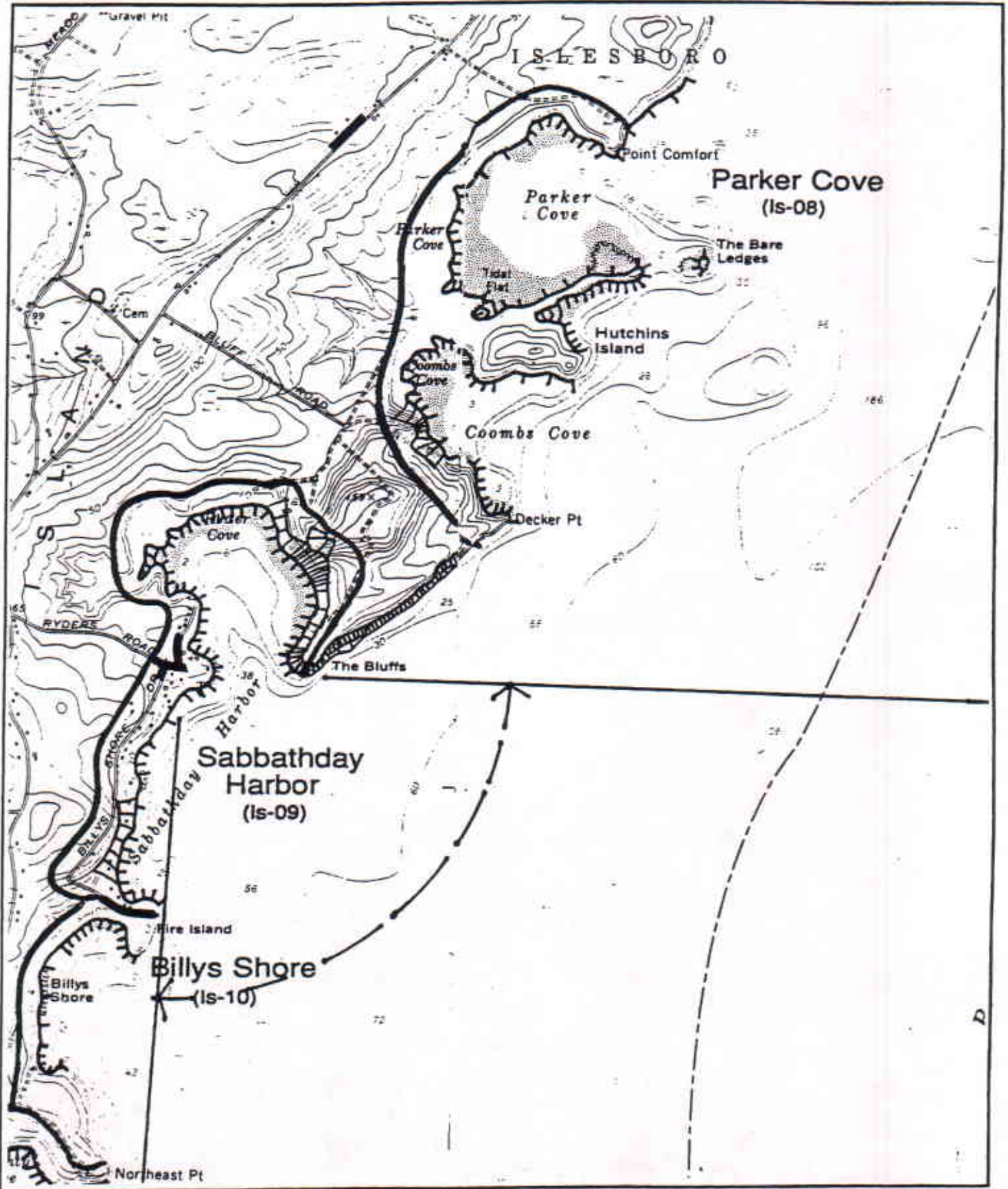


The entrance to Ryder Cove is marked by the protective arm of The Bluffs, a long, wooded, undeveloped promontory.

Scenic Area Location

Scenic Area Sabbathday Harbor Code IS-09
Islesboro USGS Quadrangle: 7.5 minute series

Town Islesboro



Scenic Area Evaluation Form

Scenic Area **Billys Shore**
1990 Coastal Scenic Inventory

Code **IS-10**
Critical Areas Program

Town **Islesboro**
Maine State Planning Office

Scenic Evaluation

SI	SC	IP
	6	X
	6	X
	3	
	9	X
	9	X
		4
33		

SI: Special Interest
SC: Scoring
IP: Indicators Present

1. Landform
Elevation
Slope
2. Open Land
3. Shoreline Configuration
4. Scenic Features
5. Scenic Quality of Water
Duration of View
Type of Water
Quality of Horizon
Indicators Present
Desktop Subtotal

	5
	1
	6
	6
	6
24	

6. Landscape Character
Land Use
Roadside Characteristics
Settlement Characteristics
7. Vegetation
8. Composition & Effect
Field Evaluation

57

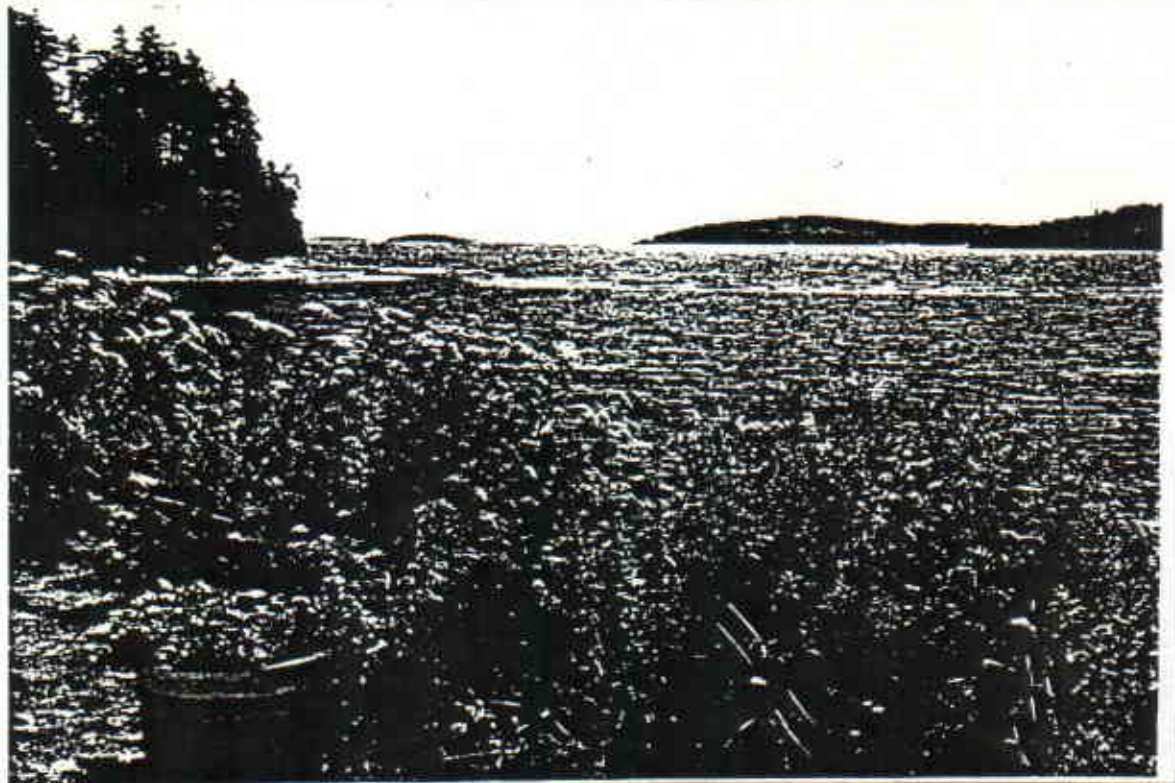
TOTAL SCORE

Viewshed Description

The water-level view of Billys Shore is limited to a single location at the end of Billys Shore Drive, where the public road ends in a private drive. A long, curvilinear gravel beach backed by mixed softwoods is seen over a narrow strip of lawns and residential landscape. Several homes on the north side of the road prevent direct views of Sabbathday Harbor. A limited view of local significance.

Viewshed Management Recommendations

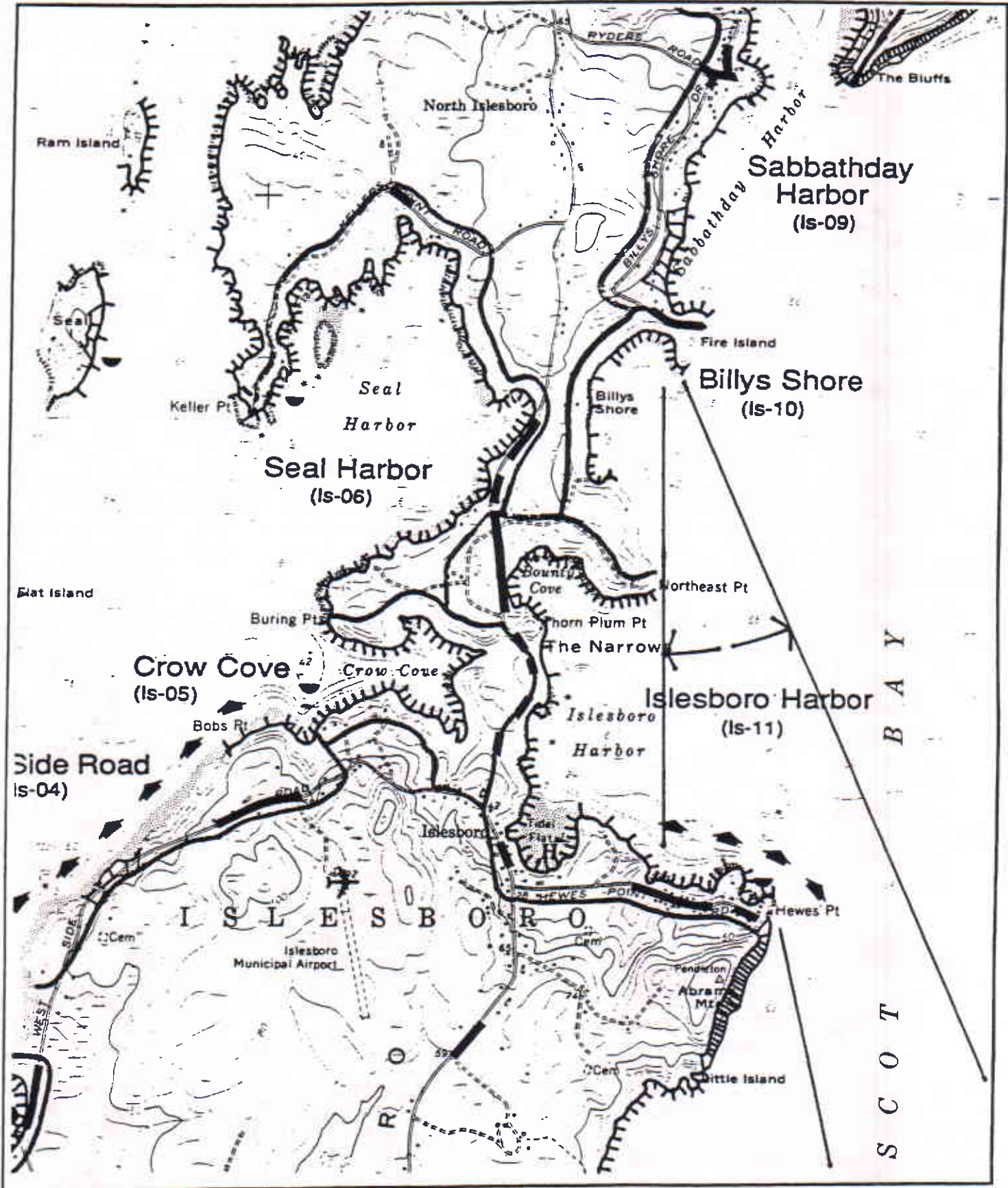
Southerly view from the end of Billys Shore Drive toward Fire Island, Northeast Point and Hewes Point.



Scenic Area Location

Scenic Area **Billys Shore** Code **IS-10**
Islesboro USGS Quadrangle: 7.5 minute series

Town **Islesboro**



Scenic Area Evaluation Form

Scenic Area **Islesboro Harbor**
1990 Coastal Scenic Inventory

Code **IS-11**
Critical Areas Program

Town **Islesboro**
Maine State Planning Office

Scenic Evaluation

SI	SC	IP
	3	X
	3	X
	6	X
X	9	X
	6	X
X	12	X
	6	X
		7
45		

	5
	3
	6
	6
	6
26	

71

SI: Special Interest
SC: Scoring
IP: Indicators Present

1. Landform
Elevation
Slope
 2. Open Land
 3. Shoreline Configuration
 4. Scenic Features
 5. Scenic Quality of Water
Duration of View
Type of Water
Quality of Horizon
Indicators Present
Desktop Subtotal
 6. Landscape Character
Land Use
Roadside Characteristics
Settlement Characteristics
 7. Vegetation
 8. Composition & Effect
Field Evaluation
- TOTAL SCORE**

Viewshed Description

Islesboro Harbor is a complex place of inlets, coves, points, mud flats, and open water, oriented to the east and northeast toward Cape Rosier and East Penobscot Bay. The rating given is a composite of all the component parts of Islesboro Harbor. Most of the harbor is visible from public roads, although its relatively large size and configuration makes it impossible to see all at once. The harbor is composed of several smaller coves and inlets, each divided by evergreen-covered rocky headlands. The majority of the small homes that border the harbor are located along its southern shoreline, clustered around Main Road or Hewes Point Road. The most prominent natural feature is The Narrows, a thin spit of land connecting both halves of the island. A sea-wall has been built up to protect the roadway from easterlies blowing in from the bay. A clearing above Bounty Cove affords a spectacular view across the Harbor, framed by a group of picturesque old oaks along the shoreline.

Viewshed Management Recommendations

Protection of open fields surrounding Bounty Cove by conservation easements. Scenic easements on Northeast Point and the land east of Main Road.



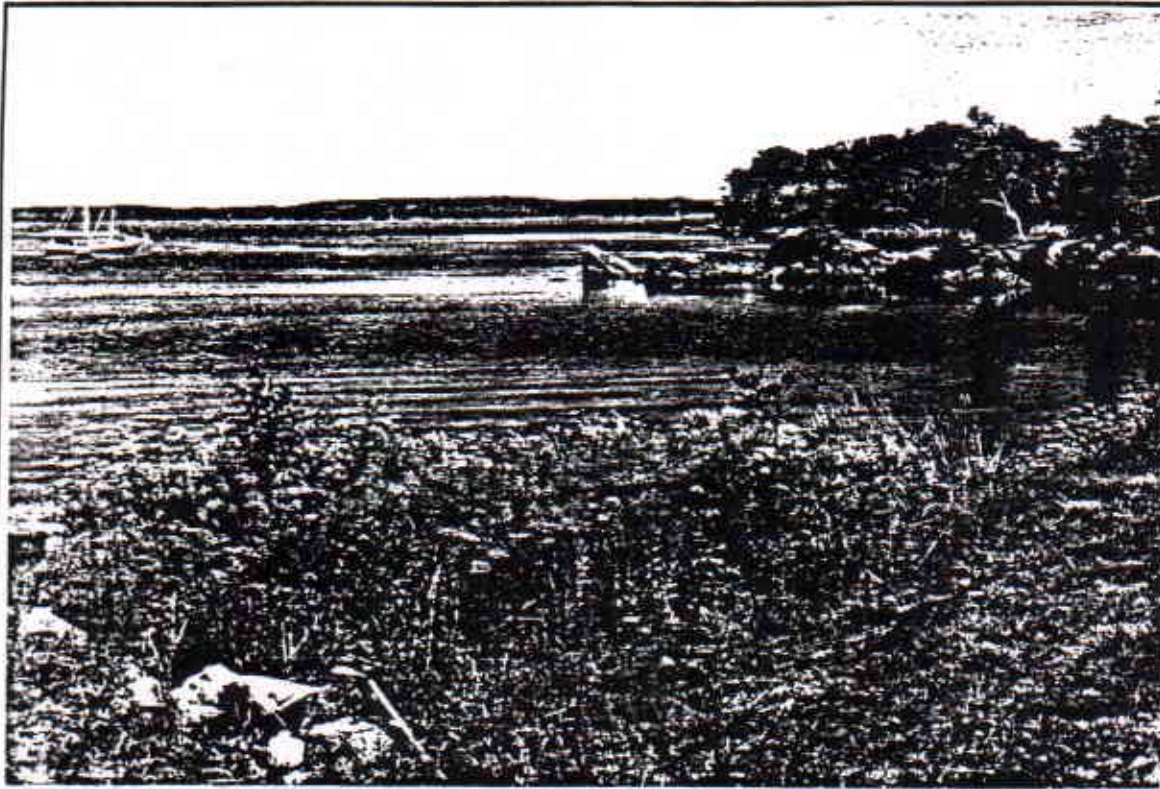
Southerly view of Hewes Point from the Narrows.

Scenic Area Evaluation Form

Scenic Area Islesboro Harbor
1990 Coastal Scenic Inventory

Code IS-11
Critical Areas Program

Town Islesboro
Maine State Planning Office



Easterly point of Islesboro Harbor from Hewes Point Road. Cape Rosier and Harborside are four miles to the northeast.

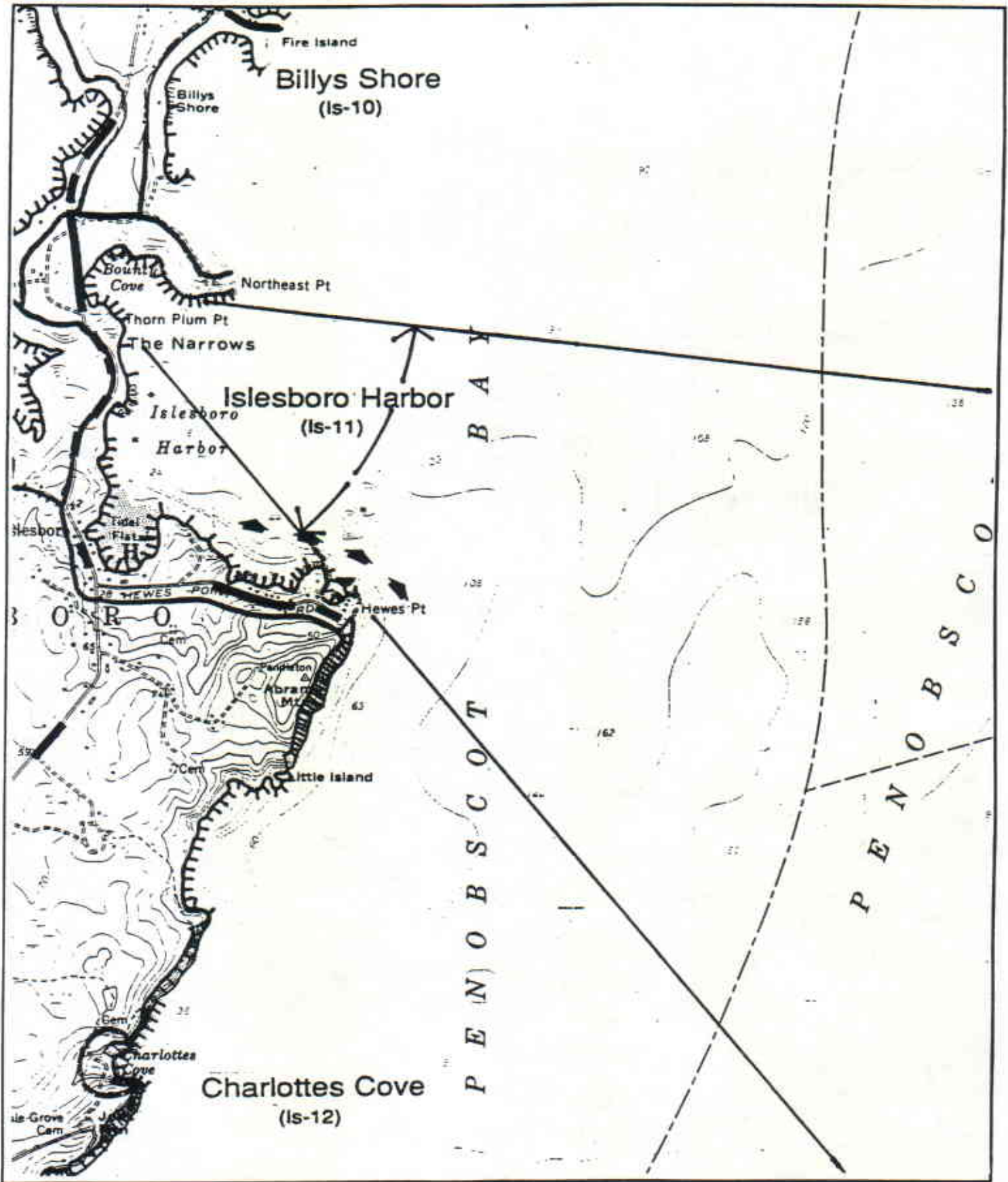


Northerly view of Islesboro Harbor from Hewes Point Road. The village of Castine is seven miles to the north.

Scenic Area Location

Scenic Area Islesboro Harbor Code IS-11
Islesboro USGS Quadrangle: 7.5 minute series

Town Islesboro



Scenic Area Evaluation Form

Scenic Area **Charlottes Cove**
1990 Coastal Scenic Inventory

Code **IS-12**
Critical Areas Program

Town **Islesboro**
Maine State Planning Office

Scenic Evaluation

SI: Special Interest
SC: Scoring
IP: Indicators Present

SI	SC	IP
	3	X
	3	X
	6	X
	6	X
	3	X
	9	X
	6	X
		7
Indicators Present		
Desktop Subtotal		36

- Landform
 - Elevation
 - Slope
 - Open Land
 - Shoreline Configuration
 - Scenic Features
 - Scenic Quality of Water
 - Duration of View
 - Type of Water
 - Quality of Horizon
- Indicators Present
Desktop Subtotal

5
4
3
6
6
24

- Landscape Character
 - Land Use
 - Roadside Characteristics
 - Settlement Characteristics
 - Vegetation
 - Composition & Effect
- Field Evaluation

60

TOTAL SCORE

Viewshed Description

Charlottes Cove is the final, and most dramatic of a series of views along East Shore Drive, which winds beside cliffs, historic cottages, and neatly manicured landscapes. The Cove is a rather small indentation along the island's eastern shoreline, enclosed by 50-70 foot rocky cliffs topped with wind swept fir and spruce. A solitary cottage to the north, a private utility corridor, and the rough gravel road are the only traces of habitation. The 300 foot-long beach appears to be paved with well sorted flat weathered stones. The cove has a great sense of seclusion, brought about by its out of the way location, the lack of development, and the distance from Main Road. The easterly views across Penobscot Bay extends to Cape Rosier and Western Island, Hog Island, and Pond Island. This portion of the bay is a popular route for schooners, which appear in silhouette against distant islands. The difficult access and lack of parking provide a check for overuse.

Viewshed Management Recommendations

Minor maintenance work on roadway and culvert.

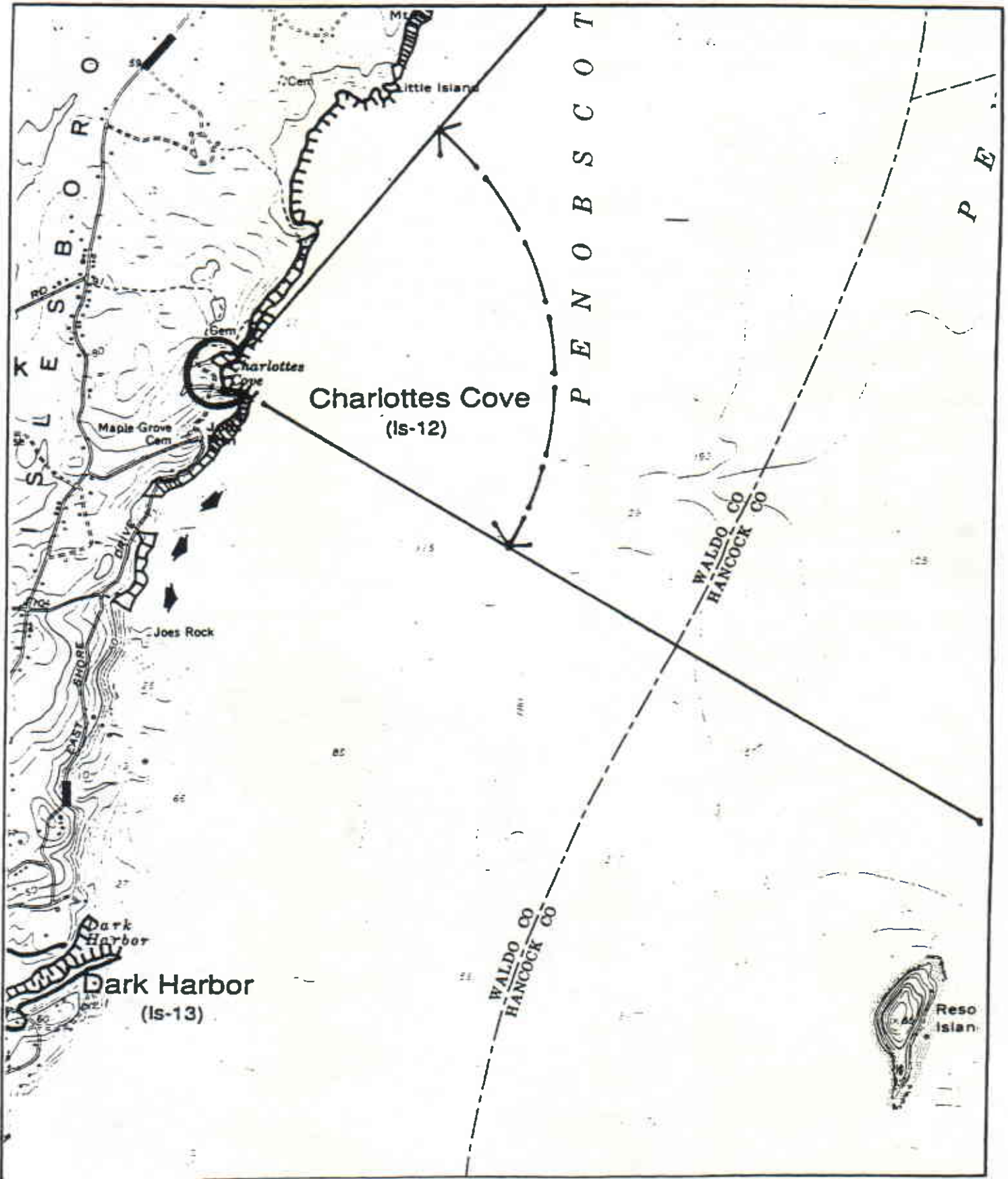
View of southerly end of Charlottes Cove, looking toward East Penobscot Bay to the southwest.



Scenic Area Location

Scenic Area Charlottes Cove Code IS-12
Islesboro USGS Quadrangle: 7.5 minute series

Town Islesboro



Scenic Area Evaluation Form

Scenic Area Dark Harbor
1990 Coastal Scenic Inventory

Code IS-13
Critical Areas Program

Town Islesboro
Maine State Planning Office

Scenic Evaluation

SI: Special Interest
SC: Scoring
IP: Indicators Present

SI	SC	IP
	3	X
	3	X
	6	X
	9	X
	3	X
	6	X
	9	X
		7
33		

- Landform
Elevation
Slope
- Open Land
- Shoreline Configuration
- Scenic Features
- Scenic Quality of Water
Duration of View
Type of Water
Quality of Horizon
Indicators Present
Desktop Subtotal

	6
	5
X	7
	7
X	7
32	

- Landscape Character
Land Use
Roadside Characteristics
Settlement Characteristics
- Vegetation
- Composition & Effect
Field Evaluation

65	
----	--

TOTAL SCORE

Viewshed Description

Recognized as the focus of the "cottage" community on Islesboro, Dark Harbor remains a well manicured village, composed of stately summer homes, informal shops, small parks, hedges and gates, and a commanding view of its harbor. The majority of the visual interest is in the foreground. A tidal pool, with calm reflective waters, is formed by a dam built of massive granite blocks. The harbor is a long, rocky, narrow slot along the island's eastern shoreline. From the tip of the harbor the water appears almost totally enclosed, pinched by low hills on either side. Main Road offers good views at sea level before rising 60 feet to the south. This is primarily a landscape to be enjoyed on foot or bicycle: most of the waterfront is private property, as noted by subtle reminders. The detailing and scale of the cottages is best appreciated at a slower pace. See The Summer Cottages of Islesboro, 1890-1930, by Earle G. Shettleworth, Jr., for a complete description of the architectural history of Islesboro.

Viewshed Management Recommendations

Strict site plan review standards to assure site and architectural compatibility for future development proposals.

View from Main Road looking northeast at Dark Harbor.

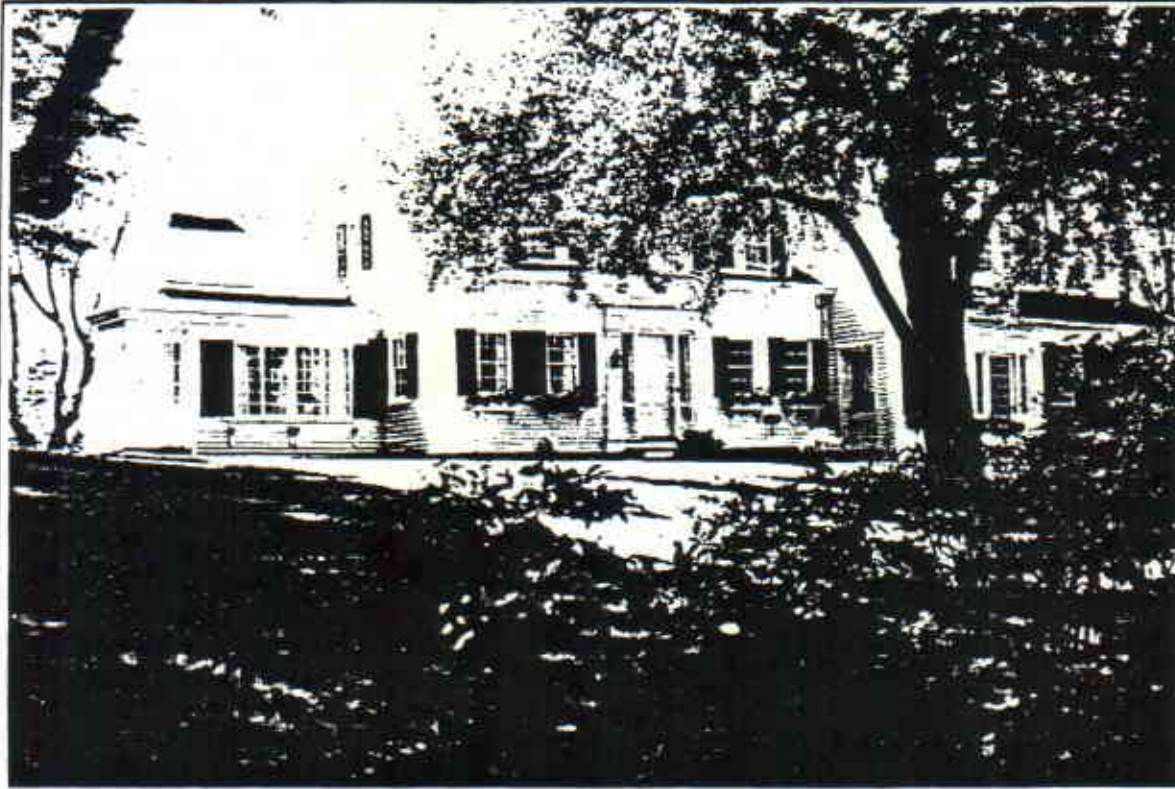


Scenic Area Evaluation Form

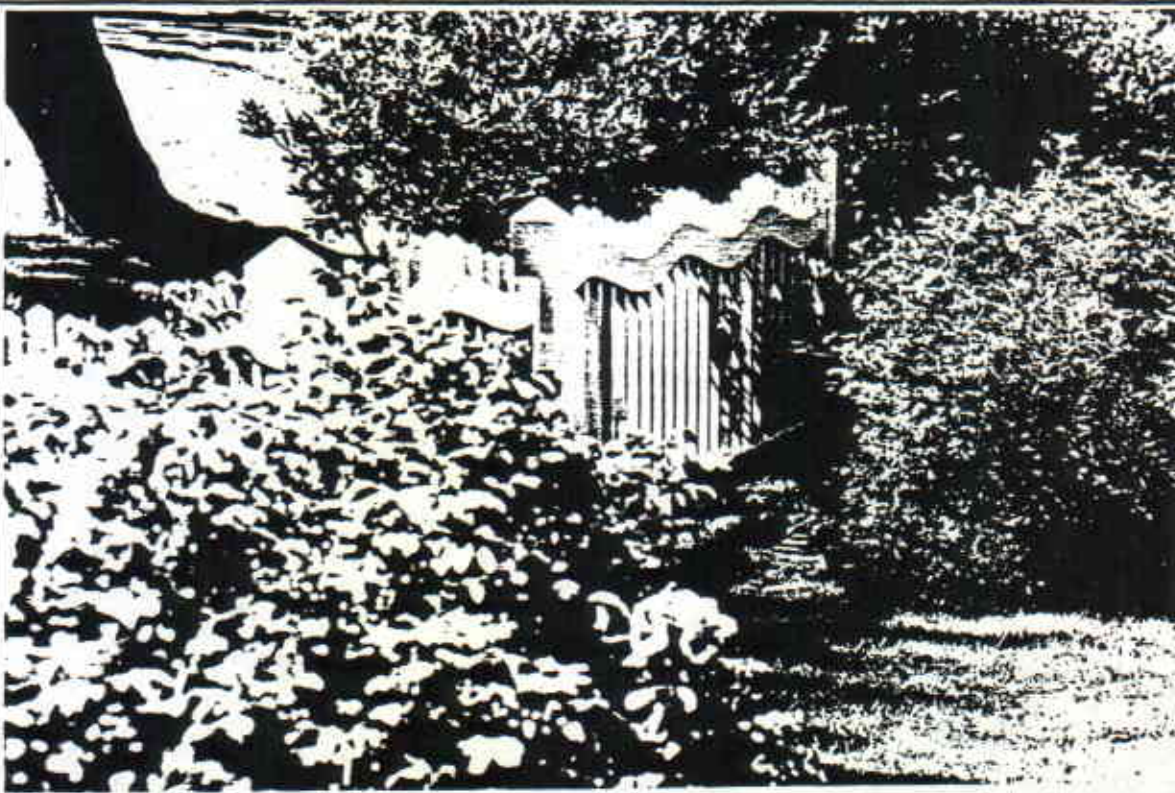
**Scenic Area Dark Harbor
1990 Coastal Scenic Inventory**

**Code IS-13
Critical Areas Program**

**Town Islesboro
Maine State Planning Office**



The Dr. Louis Starr cottage, renovated c. early 1900's, overlooking Dark Harbor.

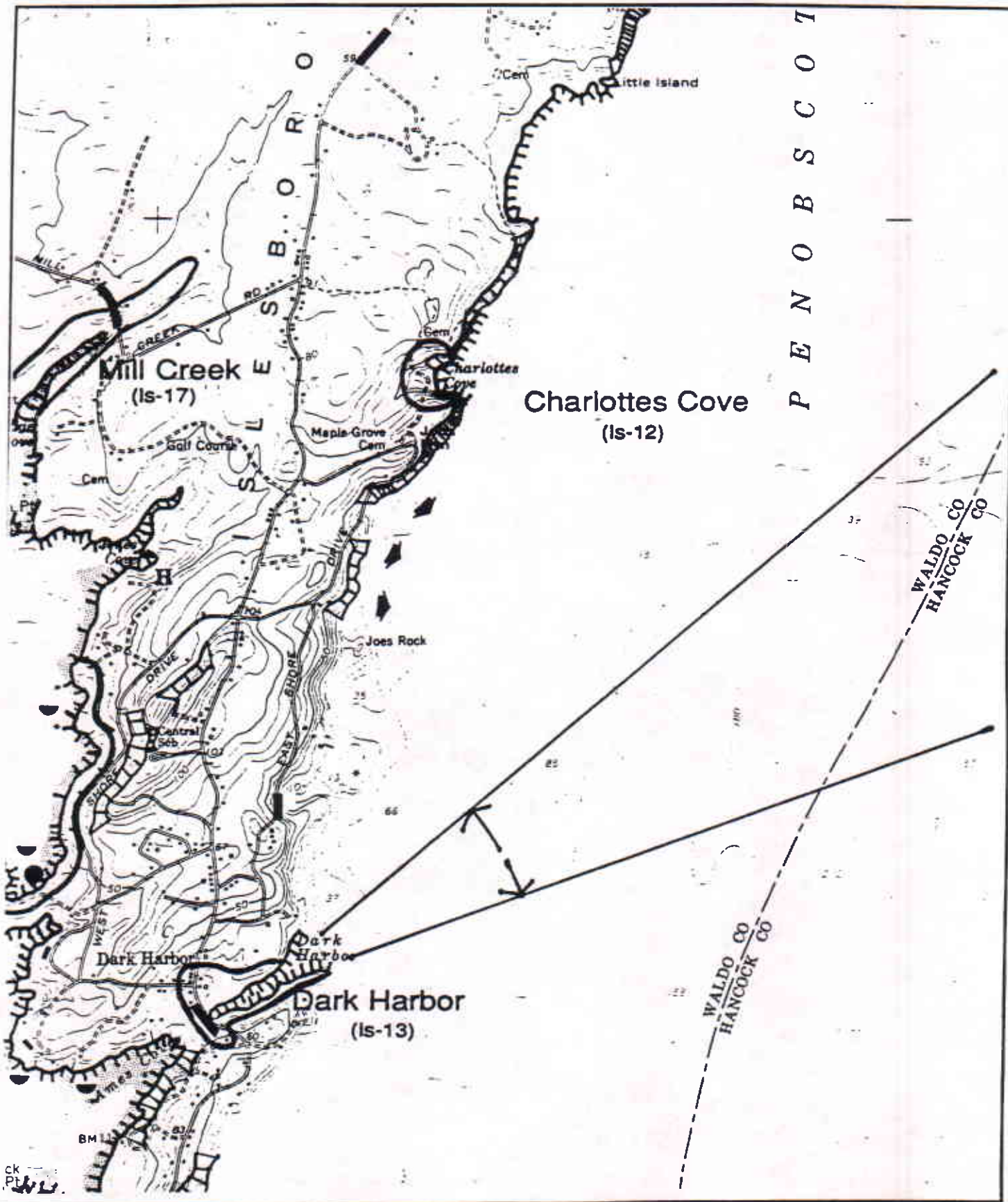


Detail of garden fence below the Starr Cottage.

Scenic Area Location

Scenic Area **Dark Harbor** Code **IS-13**
Islesboro USGS Quadrangle: 7.5 minute series

Town **Islesboro**



Scenic Area Evaluation Form

Scenic Area **Main Road Overlook**
1990 Coastal Scenic Inventory

Code **IS-14**
Critical Areas Program

Town **Islesboro**
Maine State Planning Office

Scenic Evaluation

SI: Special Interest
SC: Scoring
IP: Indicators Present

SI	SC	IP
	5	X
	2	X
	6	X
	3	X
	9	X
	9	X
		6
34		

1. Landform
Elevation
Slope
 2. Open Land
 3. Shoreline Configuration
 4. Scenic Features
 5. Scenic Quality of Water
Duration of View
Type of Water
Quality of Horizon
Indicators Present
- Desktop Subtotal**

	5
	3
	7
	6
	7
28	

6. Landscape Character
Land Use
Roadside Characteristics
Settlement Characteristics
7. Vegetation
8. Composition & Effect
Field Evaluation

62	
-----------	--

TOTAL SCORE

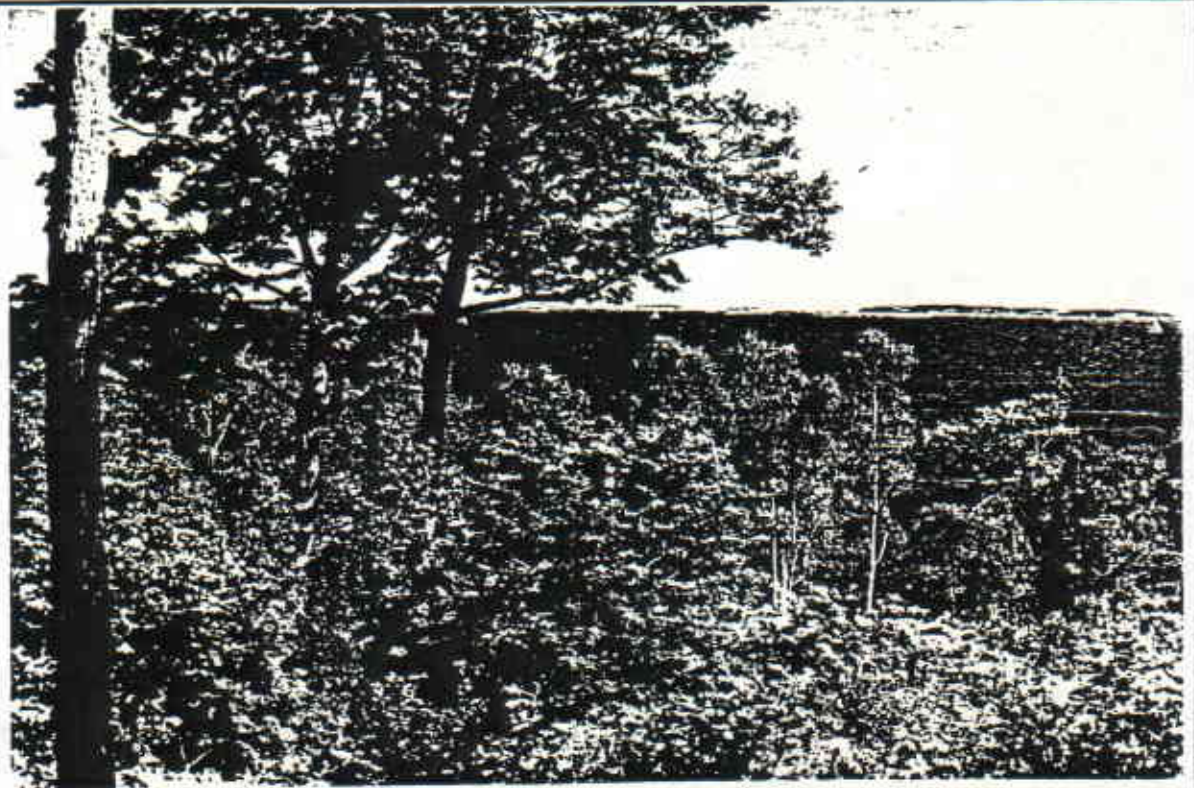
Viewshed Description

Islesboro is not noted for its dramatic relief or sweeping public panoramas. A short section of Main Road, at one of the highest points on Islesboro (elevation 80 feet), affords the motorist, jogger, walker, or bicyclist a few brief glimpses of the dramatic expanse of Penobscot Bay. The nearby landscape consists of historic cottages, private parking areas, stone walls, and manicured lawns. The view extends across the Bay to Deer Isle, and looks out to Resolution Island, Beach Island, and Barred Island at a distance of 3-4 miles.

Viewshed Management Recommendations

Work with private property owners to establish permanent view corridors to Penobscot Bay.

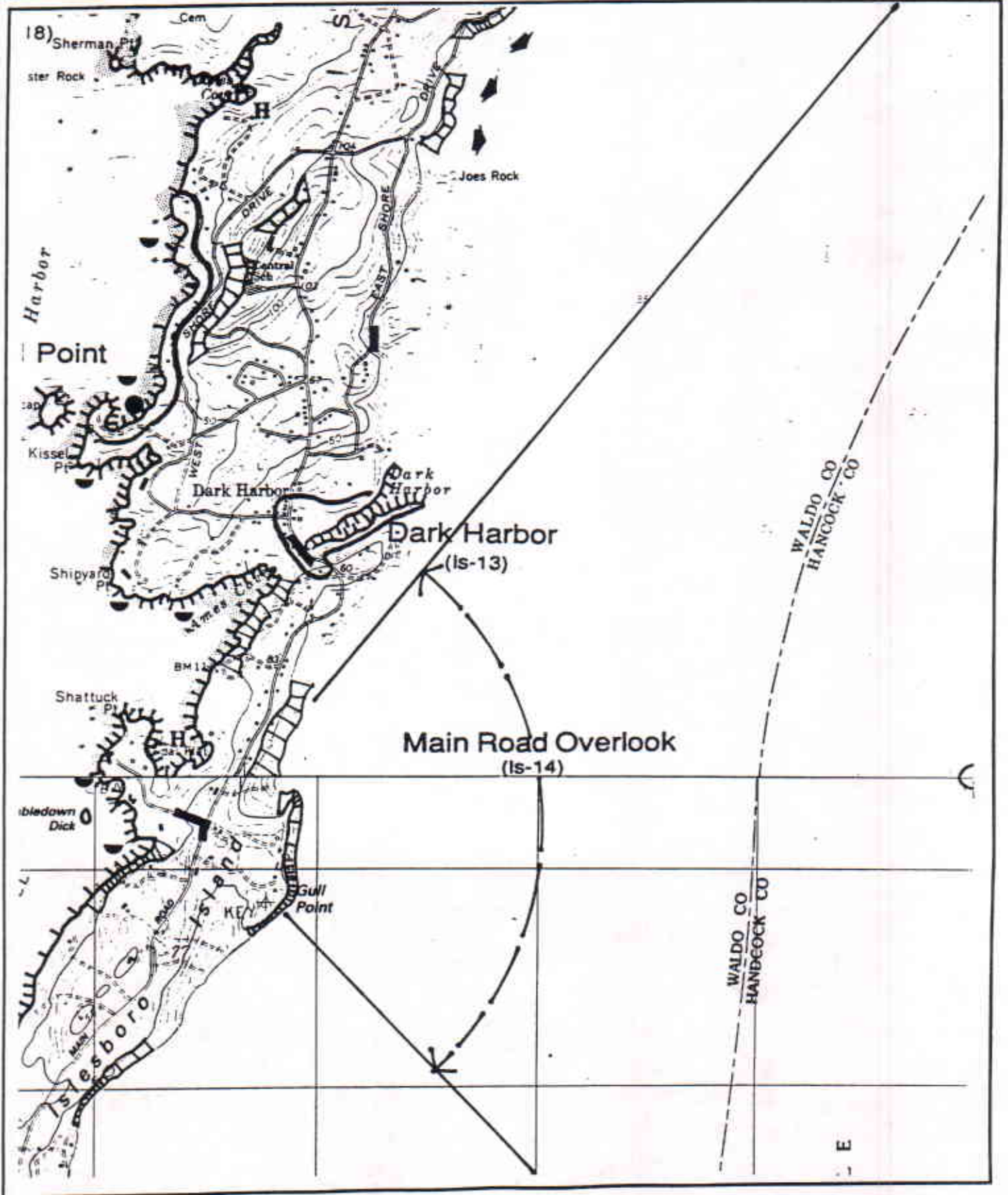
View to East Penobscot Bay from a high point on Main Road, looking east to Deer Isle.



Scenic Area Location

Scenic Area Main Road Overlook Code IS-14
Islesboro USGS Quadrangle: 7.5 minute series

Town Islesboro



Scenic Area Evaluation Form

Scenic Area Pendleton Point
1990 Coastal Scenic Inventory

Code IS-15
Critical Areas Program

Town Islesboro
Maine State Planning Office

Scenic Evaluation

SI: Special Interest
SC: Scoring
IP: Indicators Present

SI	SC	IP
	3	X
	6	X
X	6	X
	6	X
	9	X
	6	X
		7
42		

1. Landform
Elevation
Slope
2. Open Land
3. Shoreline Configuration
4. Scenic Features
5. Scenic Quality of Water
Duration of View
Type of Water
Quality of Horizon
Indicators Present
Desktop Subtotal

	5
	1
	3
	6
X	8
23	

6. Landscape Character
Land Use
Roadside Characteristics
Settlement Characteristics
7. Vegetation
8. Composition & Effect
Field Evaluation

65

TOTAL SCORE

Viewshed Description

The town beach at the southernmost tip of Islesboro is a major destination for summer visitors and day trippers. The park offers facilities for swimming and picnicking in a highly scenic environment. Spectacular views are found to the east and southeast toward Job Island and Middle Island, to the west and northwest to Bear Island, Little Spruce Head Island, Great Spruce Head Island, and North Haven Island, and Bracketts Channel. The views to the west exhibit a high degree of layering within the landscape. Views to the south and east are much more open with a distant horizon and very little to no layering. Bright colored orange/yellow lichens cover weathered rock formations along the shoreline. Typical seaside vegetation with large *Rosa rugosa*s and beach peas creeping at the edge of the rocks. The degree of naturalness is somewhat diminished by the proximity of the picnic/parking areas and a single cottage north of the beach.

Viewshed Management Recommendations

Provide additional sanitary and picnic facilities near the outer parking area. Screen parking areas from view of beach users.

The southern tip of Pendleton Point is protected on the west by Job Island and Middle Island. Rocky shoreline is typical of this section of Islesboro.



Scenic Area Evaluation Form

Scenic Area Pendleton Point
1990 Coastal Scenic Inventory

Code IS-15
Critical Areas Program

Town Islesboro
Maine State Planning Office



*Looking north from
the east side of Pen-
dleton Point.*



*View looking north
from the west side
of Pendleton Point.
Middle Island rises
above Bracketts
Channel in the fore-
ground.*

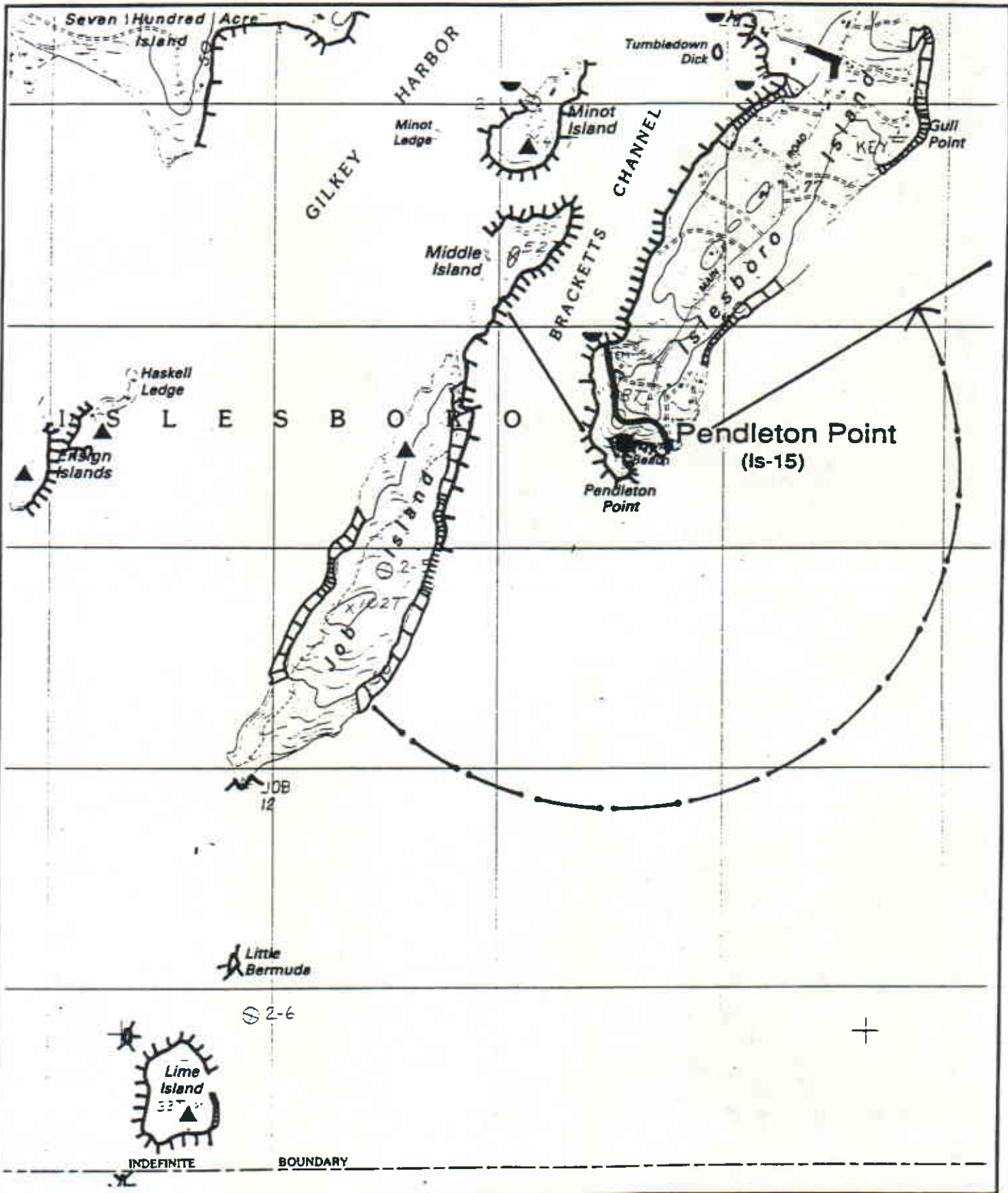
Scenic Area Location

Scenic Area Pendleton Point

Code IS-15

Town Islesboro

North Haven West USGS Quadrangle: 7.5 minute series



Scenic Area Evaluation Form

Scenic Area Kissel Point Road
1990 Coastal Scenic Inventory

Code IS-16
Critical Areas Program

Town Islesboro
Maine State Planning Office

Scenic Evaluation

SI: Special Interest
SC: Scoring
IP: Indicators Present

SI	SC	IP
	3	X
	6	X
	9	X
	3	X
	12	X
	6	X
		6
Indicators Present		
Desktop Subtotal		39

1. Landform
Elevation
Slope
2. Open Land
3. Shoreline Configuration
4. Scenic Features
5. Scenic Quality of Water
Duration of View
Type of Water
Quality of Horizon

Indicators Present
Desktop Subtotal

	7
	3
X	8
	6
	7
Field Evaluation	
31	
TOTAL SCORE	
70	

6. Landscape Character
Land Use
Roadside Characteristics
Settlement Characteristics
7. Vegetation
8. Composition & Effect

TOTAL SCORE

Viewshed Description

Gilkey Harbor is lined with many of the summer cottages described in Earl Shettleworth's The Summer Cottages of Islesboro, 1890-1930. This point along the Kissel Point Road affords a glimpse into the harbor, with its long stone piers, boat houses, and sailing vessels. The view gives a good sense of the protection offered by the harbor, since it seems to be totally enclosed at this point. The foreground includes manicured lawns and landscapes, several notable cottages, and the open waters of the harbor. The viewpoint is primarily of local interest, since the gravel road leads to several private drives without an easy point to turn around.

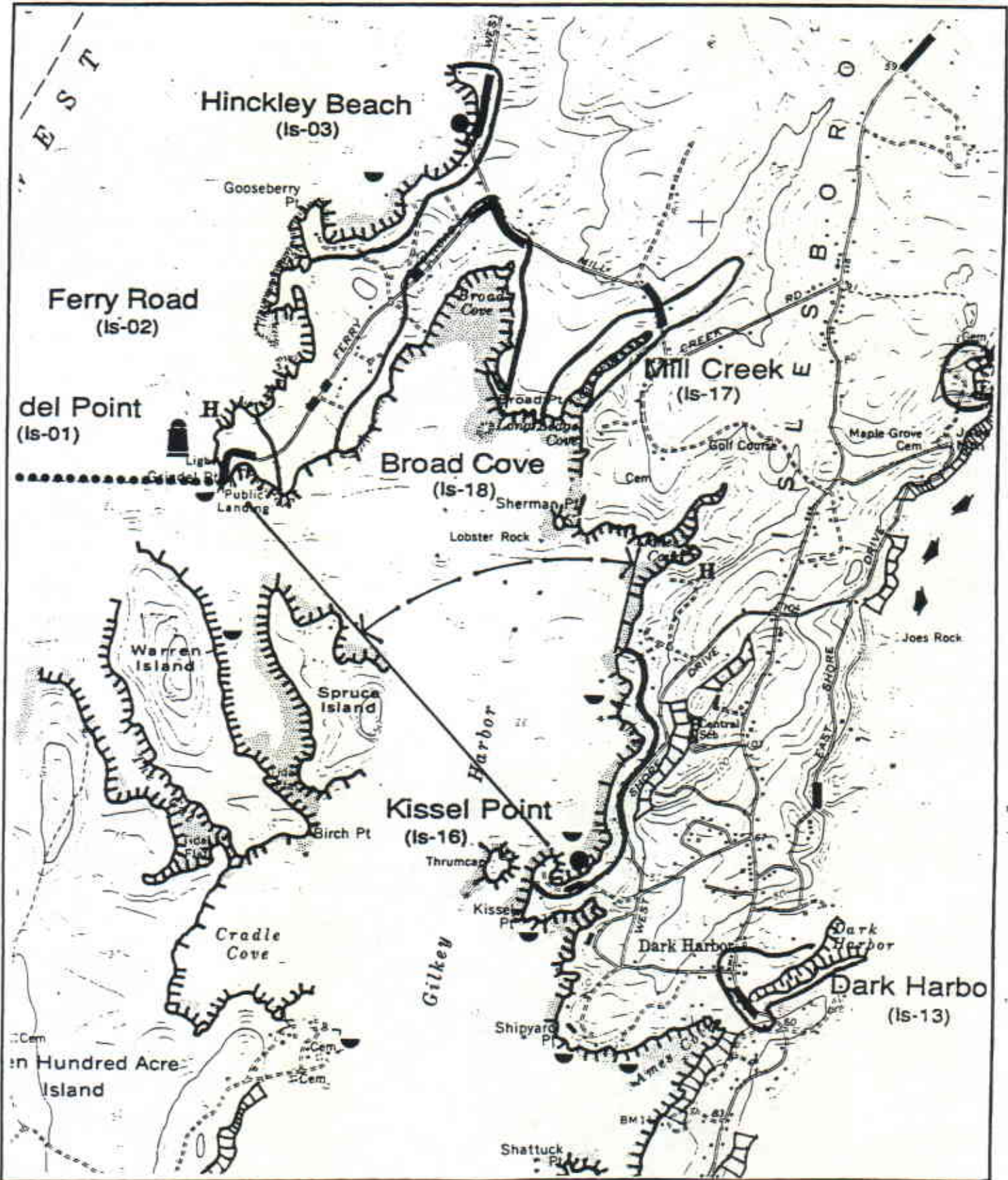
Viewshed Management Recommendations



Scenic Area Location

Scenic Area Kissel Point Road Code IS-16
Islesboro USGS Quadrangle: 7.5 minute series

Town Islesboro



Scenic Area Evaluation Form

Scenic Area Mill Creek
1990 Coastal Scenic Inventory

Code IS-17
Critical Areas Program

Town Islesboro
Maine State Planning Office

Scenic Evaluation

SI: Special Interest
SC: Scoring
IP: Indicators Present

SI	SC	IP
	4	X
	6	X
	3	X
	3	X
	6	X
	6	X
		6
28		

1. Landform
Elevation
Slope
 2. Open Land
 3. Shoreline Configuration
 4. Scenic Features
 5. Scenic Quality of Water
Duration of View
Type of Water
Quality of Horizon
Indicators Present
- Desktop Subtotal

	4
	5
	6
	3
	5
23	

6. Landscape Character
Land Use
Roadside Characteristics
Settlement Characteristics
7. Vegetation
8. Composition & Effect
Field Evaluation

51

TOTAL SCORE

Viewshed Description

The view from the bridge over Mill Creek extends from a small tidal flat at the edge of Long Ledge Cove, a narrow inlet in Gilkey Harbor, to Spruce Island and Warren Island, 1.5 miles to the southwest. The duration of the view is limited by the alignment of the road and the dense evergreen vegetation on either side. The view up Mill Creek to the northeast is the only view of an estuary on the island. Mature locust, pine, birch, and cedars line the road and add a distinctive character to the residences located nearby. Locally significant views.

Viewshed Management Recommendations

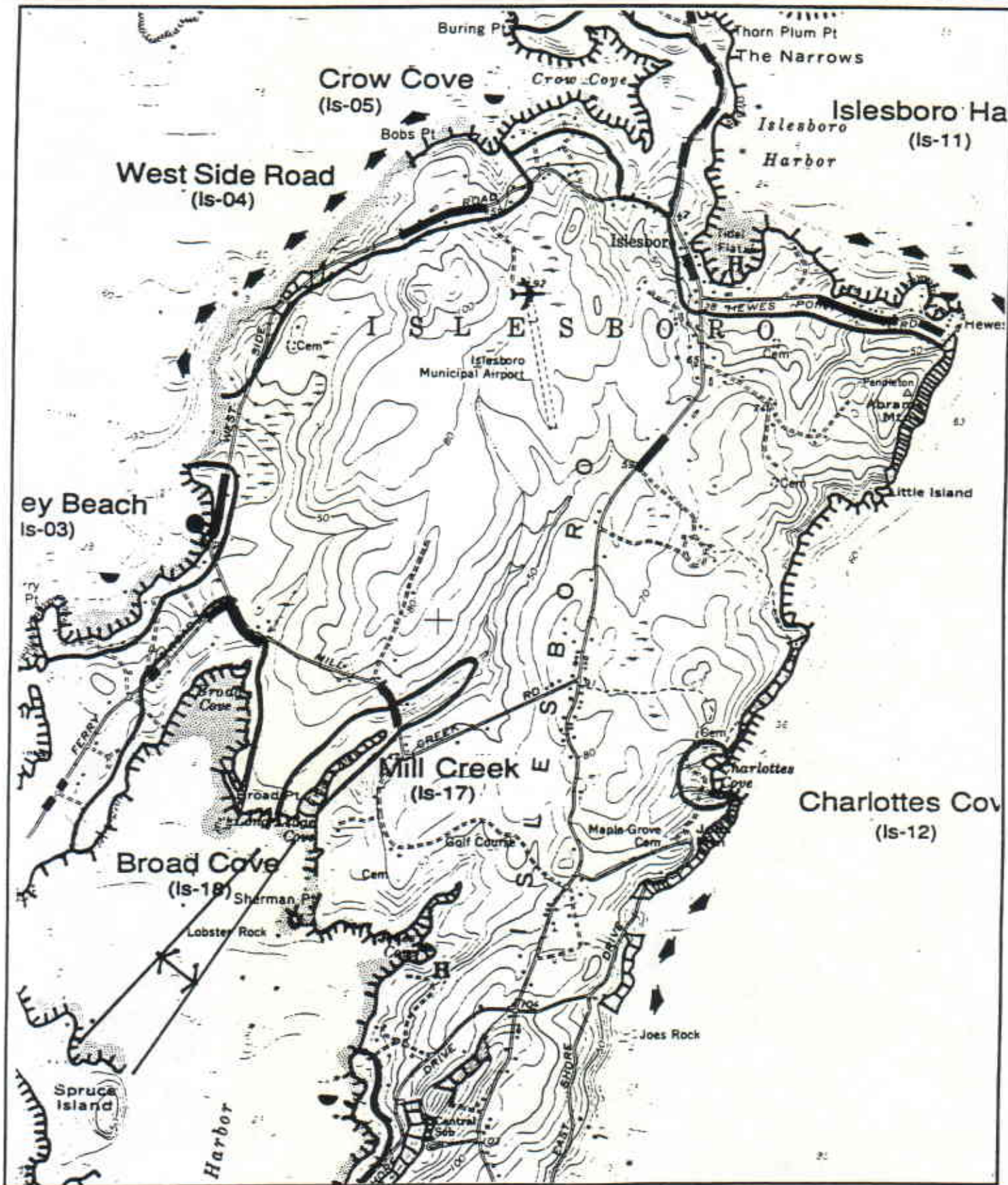
View southwest toward Gilkey Harbor and Spruce Island from the bridge over Mill Creek.



Scenic Area Location

Scenic Area Mill Creek Code IS-17
Islesboro USGS Quadrangle: 7.5 minute series

Town Islesboro



Scenic Area Evaluation Form

Scenic Area **Broad Cove**
1990 Coastal Scenic Inventory

Code **IS-18**
Critical Areas Program

Town **Islesboro**
Maine State Planning Office

Scenic Evaluation

SI: Special Interest
SC: Scoring
IP: Indicators Present

SI	SC	IP
	6	X
	9	X
	9	X
	6	X
	12	X
	6	X
		6
		42

1. Landform
Elevation
Slope
2. Open Land
3. Shoreline Configuration
4. Scenic Features
5. Scenic Quality of Water
Duration of View
Type of Water
Quality of Horizon
Indicators Present
Desktop Subtotal

	3
	2
	3
	5
	3
16	

6. Landscape Character
Land Use
Roadside Characteristics
Settlement Characteristics
7. Vegetation
8. Composition & Effect
Field Evaluation

58

TOTAL SCORE

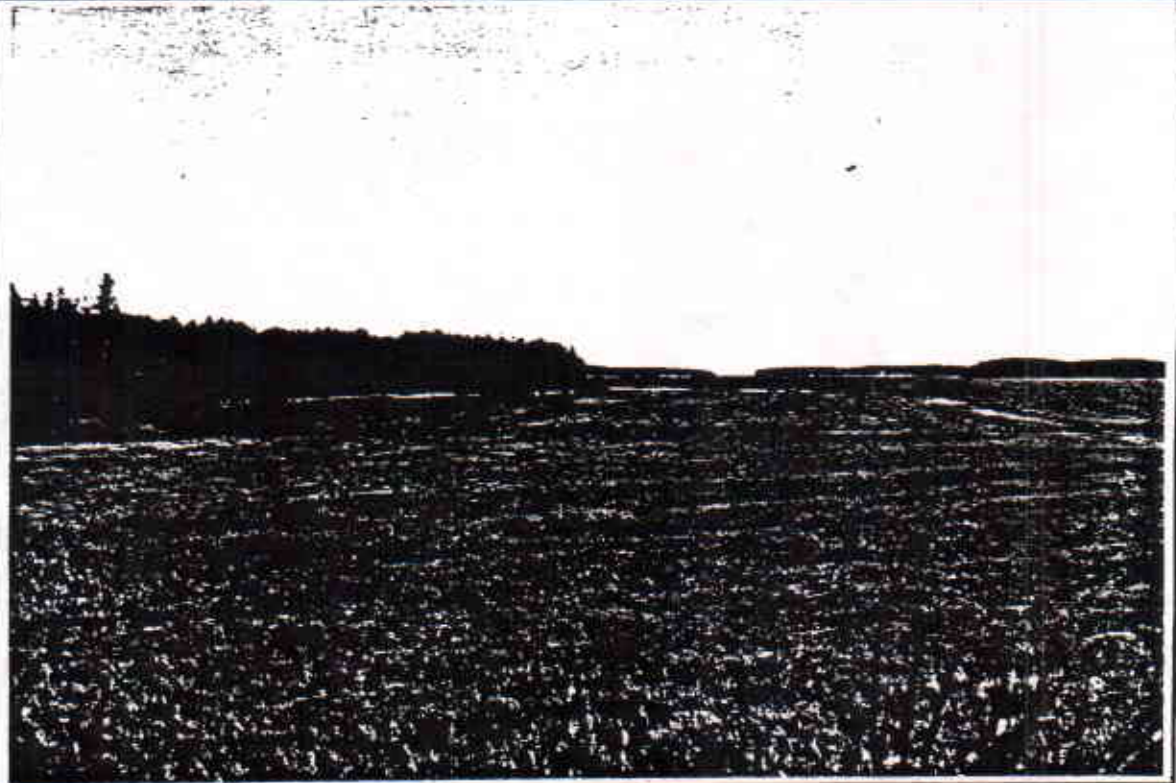
Viewshed Description

The views to Broad Cove are primarily at sea level, looking over open fields with occasional homes and outbuildings. The cove is oriented toward Spruce Island, located 1.5 miles to the southwest. The view from the intersection of Mill Creek Road and Ferry Road is one of the longest of the Gilkey Harbor area, and is significant due to its proximity to the ferry landing. The horizon appears to be totally closed, due to the highly configured nature of the shoreline and the pattern of large islands in Gilkey Harbor. Most of the landforms visible from the road are low in profile with limited vertical interest.

Viewshed Management Recommendations

Preserve visual access to Broad Cove with protective covenants on the open fields and strict site plan review standards.

Southerly view from Mill Road, looking at Broad Cove in the foreground and Gilkey Harbor in the midground



Scenic Area Location

Scenic Area Broad Cove Code IS-18
Islesboro USGS Quadrangle: 7.5 minute series

Town Islesboro

