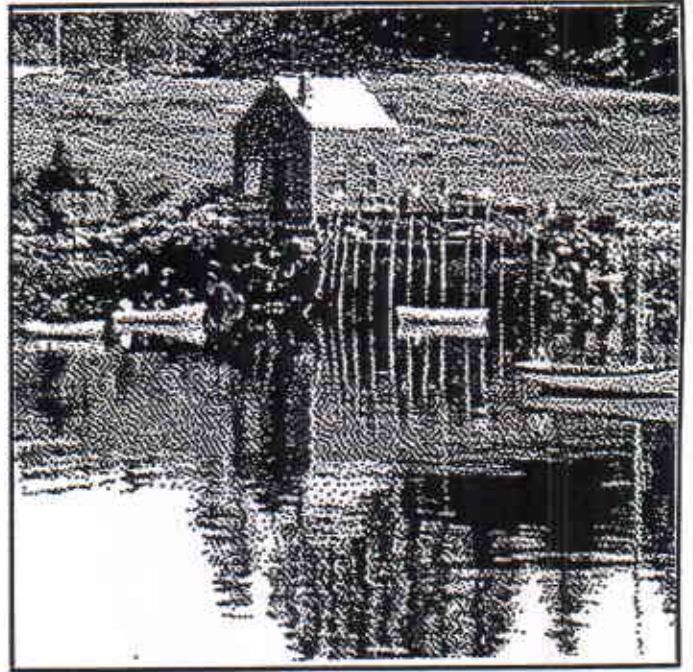


INTRODUCTION





INTRODUCTION

Maine, along with many other states and Federal Agencies, has become increasingly aware of the value and the fragility of its scenic resources. The Maine Legislature has directed the State Planning Office to conduct inventories identifying botanical, zoological, geological, and scenic areas in Maine of statewide significance as part of the process of compiling the Register of Critical Areas (Title 5 Sections 3310 - 3314). During the past few years the State Planning Office has conducted or administered scenic inventories of southern coastal Maine (Dominie and Droege, 1987), Penobscot Bay (DeWan and Naetzker, 1990), scenic lakes in the unorganized towns (Jones, 1986), and scenic lakes in the organized towns (Lortie, 1989).

In 1978 Paul Adamus, writing in The Natural Regions of Maine, described the Coast of Maine as being comprised of five physiographic, relatively homogeneous natural regions. Region III, The Greater Penobscot Bay, is one of those areas, delineated by the bounds of Penobscot Bay, and extending from Muscongus Bay to Frenchmans Bay (Adamus, 1978). Figure 1 illustrates the Coast, showing the five physiographic regions.

In 1990 the State Planning Office contracted with Terrence J. DeWan & Associates, Yarmouth, Maine to prepare a Scenic Inventory of Islesboro, North Haven, and Vinalhave and Associated Offshore Islands. The purpose of this study was to document significant scenic areas as viewed from public roads and other public access points, views from the islands, and offshore islands. Figure 2 illustrates the limits of the study area.

The information gathered as part of this inventory will be available for a number of agencies and interest groups, among which are:

- The Critical Areas Program of the State Planning Office
- The Geographic Information Office
- The Department of Environment Protection
- The Land for Maine's Future Board
- The Maine Department of Transportation
- The Maine Tourism Council
- The Maine Film Commission
- Local town officials
- Local Planning Boards
- Local Comprehensive Planning Committees
- The Maine Coast Heritage Trust and Nature Conservancy
- Local land trusts

Further discussion regarding the use of this information is found in the Recommendations section.

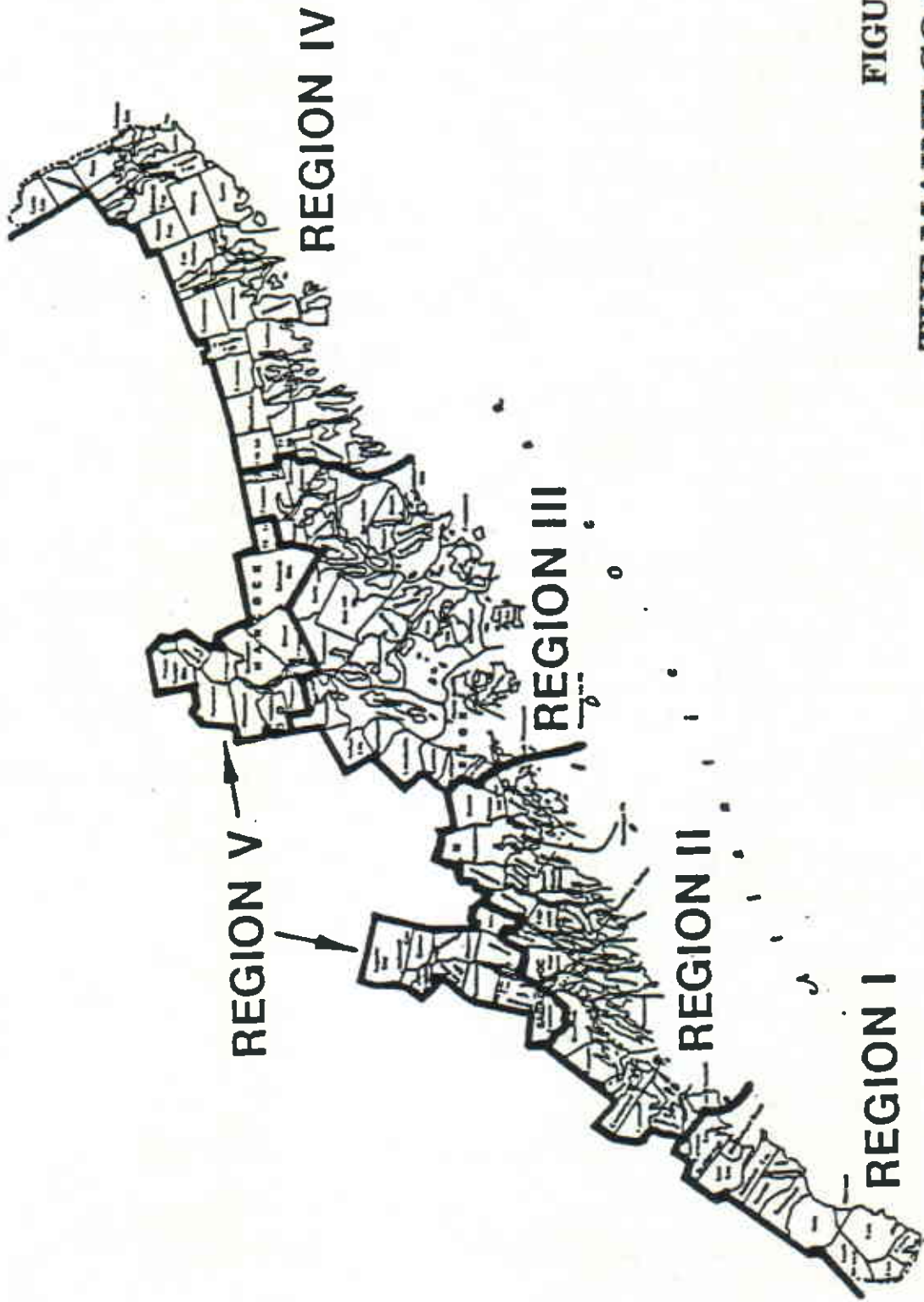


FIGURE 1
THE MAINE COAST
PHYSIOGRAPHIC REGIONS
 Source: *The Natural Regions of Maine*, by Paul Adamus, 1978

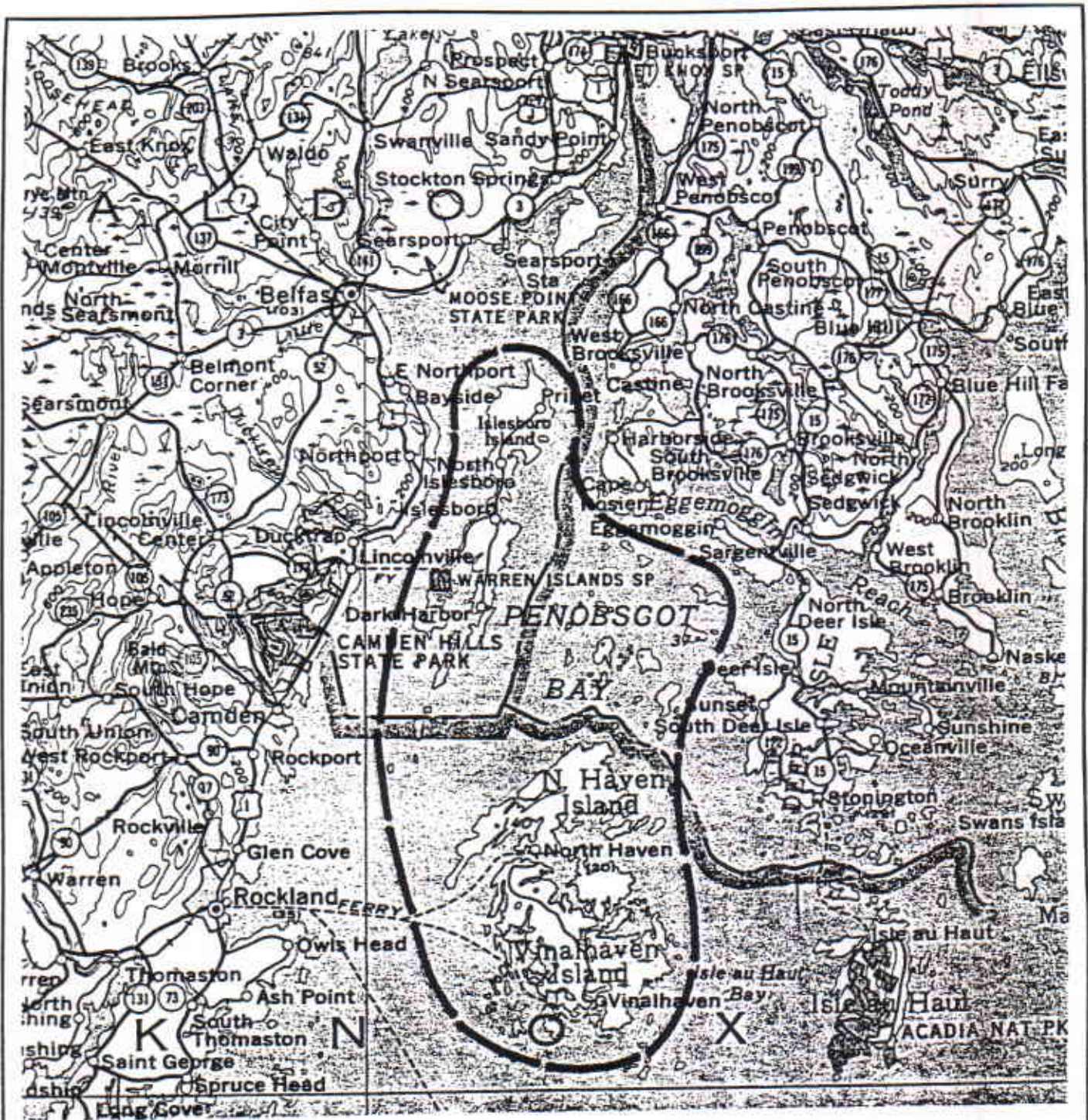


FIGURE 2

STUDY AREA

SCENIC INVENTORY

Islesboro, Vinalhaven, North Haven, and
Associated Offshore Islands